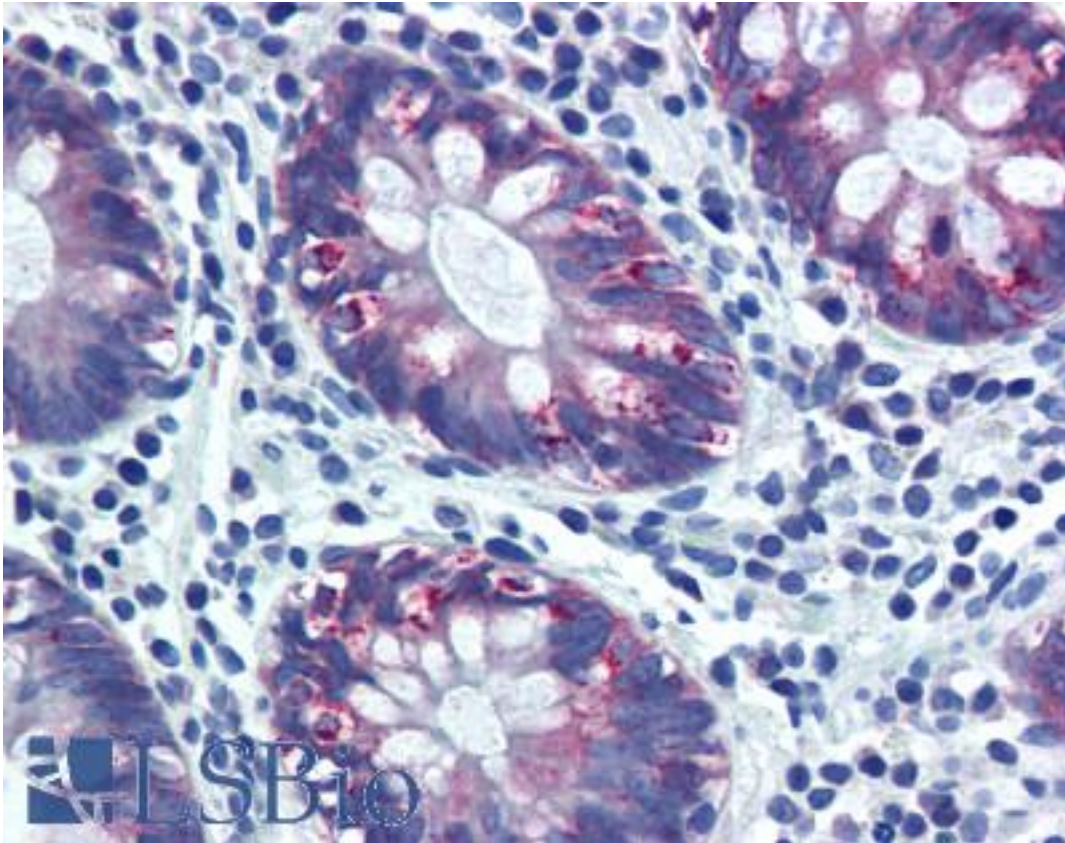


**AGR2 Rabbit anti-Human Polyclonal (aa55-72) Antibody - LS-B2011 - LSBio**

<b>CatalogID:</b>	LS-B2011
<b>Validation:</b>	This antibody replaces catalog number LS-C19383. It has been validated for use in the following assays: IHC-P.
<b>Target:</b>	anterior gradient 2 (AGR2)
<b>Synonyms:</b>	AGR2 Antibody, AG2 Antibody, AG-2 Antibody, HPC8 Antibody, HAG-2 Antibody, Secreted cement gland homolog Antibody, Anterior gradient homolog 2 Antibody, GOB-4 Antibody, PDIA17 Antibody, XAG-2 Antibody
<b>Host</b>	AGR2 antibody was produced in Rabbit
<b>Clonality:</b>	Polyclonal
<b>Immunogen Species:</b>	AGR2 antibody was raised against Human
<b>Antigen Type:</b>	Synthetic peptide
<b>Immunogen:</b>	AGR2 antibody was raised against this antibody was developed against synthetic peptides corresponding to amino acids 55-72 (TQTYEEALYKSKTSNKPL) of human AGR2. Percent identity by BLAST analysis: Human, Gorilla, Orangutan, Gibbon, Monkey, Marmoset, Panda, Dog, Bovine, Horse, Rabbit, Pig (100%); Rat, Hamster, Elephant, Bat, Opossum, Platypus (94%); Mouse (89%); Chicken (83%).
<b>Specificity:</b>	Synthetic peptides corresponding to amino acids 55-72 (TQTYEEALYKSKTSNKPL) of human AGR2; Genbank accession no. NP_006399.1
<b>Epitope:</b>	aa55-72
<b>Reactivity:</b>	Human, Gorilla, Orangutan, Gibbon, Monkey, Bovine, Dog, Horse, Pig, Rabbit
<b>Predicted Reactivity:</b>	Rat, Bat, Hamster
<b>Purification:</b>	Protein G purified
<b>Presentation:</b>	PBS containing 0.05% BSA and 0.05% sodium azide
<b>Recommended Storage:</b>	Store at 4°C for short term applications. For long term storage, aliquot and store at -20°C.
<b>Usage Summary:</b>	Immunohistochemistry: LS-B2011 was validated for use in immunohistochemistry on a panel of 21 formalin-fixed, paraffin-embedded (FFPE) human tissues after heat induced antigen retrieval in pH 6.0 citrate buffer. After incubation with the primary antibody, slides were incubated with biotinylated secondary antibody, followed by alkaline phosphatase-streptavidin and chromogen. The stained slides were evaluated by a pathologist to confirm staining specificity. The optimal working concentration for LS-B2011 was determined to be 20 ug/ml.
<b>Uses:</b>	IHC - Paraffin (20 µg/ml), ELISA (1:100 - 1:1000) (Optimal dilution to be determined by the researcher)
<b>Size:</b>	50 µg
<b>Concentration:</b>	0.5 mg/ml

**Immunohistochemistry Image:**



Anti-AGR2 antibody IHC of human colon. Immunohistochemistry of formalin-fixed, paraffin-embedded tissue after heat-induced antigen retrieval. Antibody LS-B2011 concentration 20 ug/ml.

**Requested From:**

Japan

Laboratory Reagent For In Vitro Research Use Only

Not for resale without prior written consent from LifeSpan BioSciences, Inc.

Created on 9/23/2014

© 2014 LifeSpan BioSciences