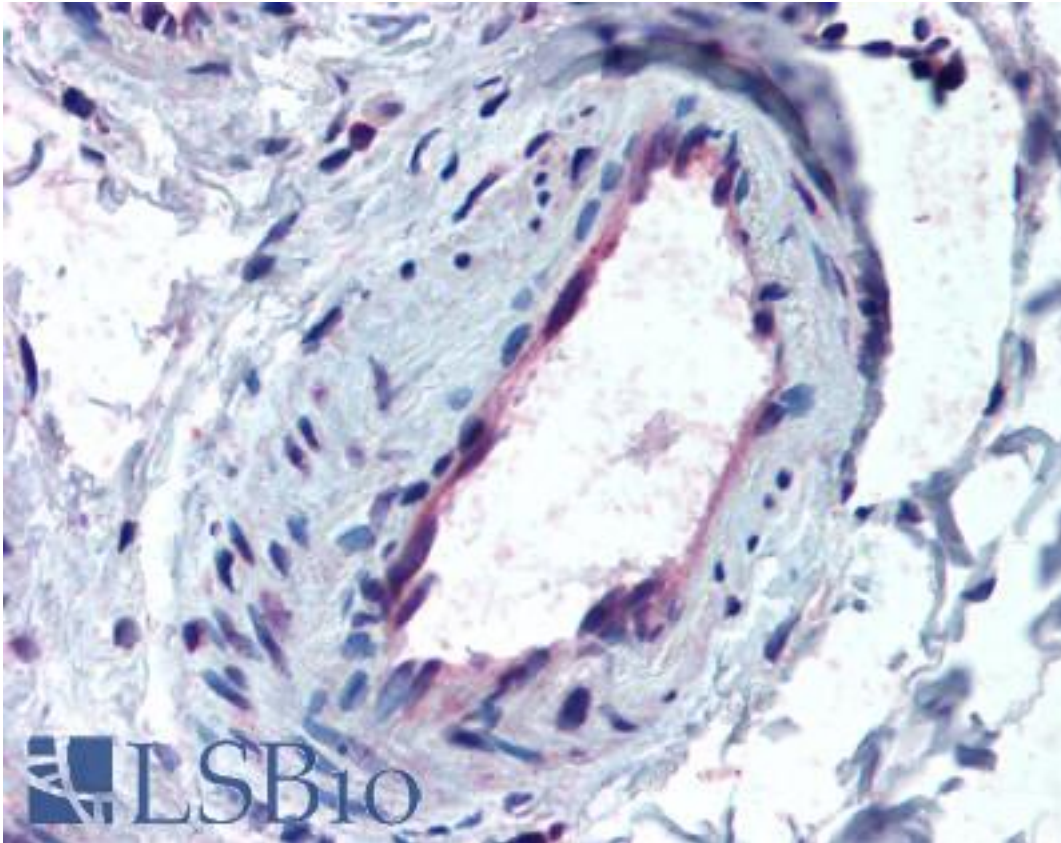


ALK2 / ACVR1 Rabbit anti-Human Polyclonal (aa496-509) Antibody - LS-B2010 - LSBio

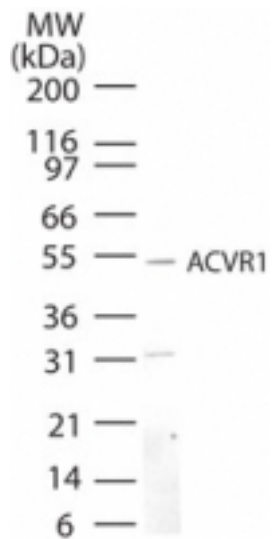
CatalogID:	LS-B2010
Validation:	This antibody replaces catalog number LS-C19345. It has been validated for use in the following assays: IHC-P.
Target:	activin A receptor, type I (ACVR1)
Synonyms:	ACVR1 Antibody, Activin A receptor type I Antibody, Activin A receptor, type I Antibody, ACTR-I Antibody, ActRIA Antibody, ACVR1A Antibody, ALK2 Antibody, Activin receptor-like kinase 2 Antibody, Activin receptor type-1 Antibody, ACTRI Antibody, ACVRLK2 Antibody, ALK-2 Antibody, Activin receptor type I Antibody, Actr1 Antibody, FOP Antibody, Hydroxyalkyl-protein kinase Antibody, SKR1 Antibody, TSRI Antibody, TSR-I Antibody, Tsk7L Antibody
Family / Subfamily:	Protein Kinase / Activin/TGFb
Host	ACVR1 antibody was produced in Rabbit
Clonality:	Polyclonal
Immunogen Species:	ALK2 / ACVR1 antibody was raised against Human
Antigen Type:	Synthetic peptide
Immunogen:	ALK2 / ACVR1 antibody was raised against a synthetic peptide corresponding to amino acids 496-509 (TKIDNSLDKLTDC) of amino acids 475-525 of human ACVR1 was used as immunogen, GenBank NP 001096. Percent identity by BLAST analysis: Human, Gorilla, Gibbon, Monkey, Marmoset, Mouse, Rat, Hamster, Elephant, Panda, Dog, Bat, Bovine, Horse, Rabbit, Pig, Xenopus (100%); Opossum, Turkey, Chicken, Platypus, Salmon (93%); Stickleback, Pufferfish (86%).
Specificity:	A portion of amino acids 475-509 of human ACVR1 was used as the immunogen.
Epitope:	aa496-509
Reactivity:	Human, Gorilla, Gibbon, Monkey, Mouse, Rat, Bat, Bovine, Dog, Hamster, Horse, Pig, Rabbit, Xenopus
Predicted Reactivity:	Chicken
Purification:	Protein G purified
Presentation:	PBS, 0.2% gelatin, 0.05% sodium azide.
Recommended Storage:	Long term: -20°C; Short term: +4°C. Avoid repeat freeze-thaw cycles.
Usage Summary:	Immunohistochemistry: LS-B2010 was validated for use in immunohistochemistry on a panel of 21 formalin-fixed, paraffin-embedded (FFPE) human tissues after heat induced antigen retrieval in pH 6.0 citrate buffer. After incubation with the primary antibody, slides were incubated with biotinylated secondary antibody, followed by alkaline phosphatase-streptavidin and chromogen. The stained slides were evaluated by a pathologist to confirm staining specificity. The optimal working concentration for LS-B2010 was determined to be 10 ug/ml.
Uses:	IHC - Paraffin (10 µg/ml), Western blot (3 - 5 µg/ml) (Optimal dilution to be determined by the researcher)
Size:	50 µg
Concentration:	0.5 mg/ml

Immunohistochemistry Image:



Anti-ACVR1 antibody IHC of human skeletal muscle, vessel. Immunohistochemistry of formalin-fixed, paraffin-embedded tissue after heat-induced antigen retrieval. Antibody LS-B2010 concentration 10 ug/ml.

Western Blot Image:



Western blot of ACVR1 in mouse kidney lysate using antibody at 5 ug/ml

Requested From:

Japan

Laboratory Reagent For In Vitro Research Use Only

Not for resale without prior written consent from LifeSpan BioSciences, Inc.

Created on 9/23/2014

© 2014 LifeSpan BioSciences