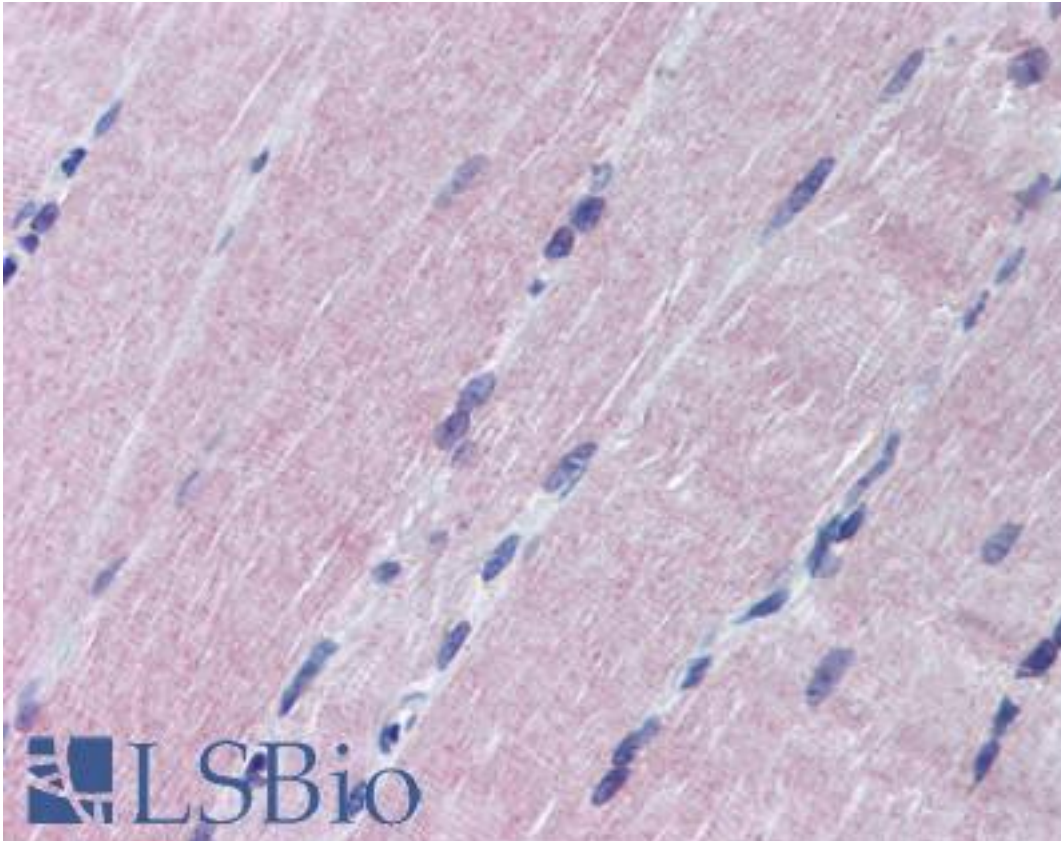


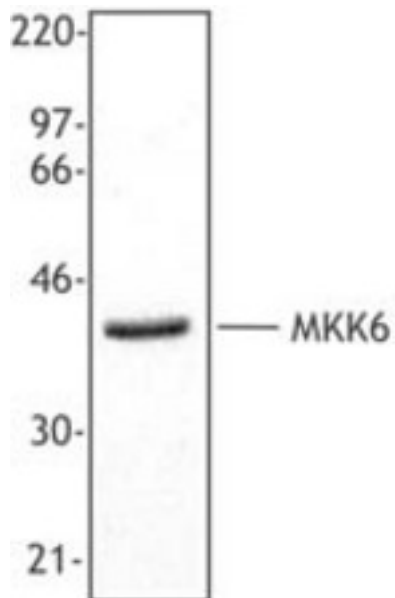
MAP2K6 / MEK6 Rabbit anti-Mouse Polyclonal (N-Terminus) Antibody - LS-B2006 - LSBio	
<b>CatalogID:</b>	LS-B2006
<b>Validation:</b>	This antibody replaces catalog number LS-C41222. It has been validated for use in the following assays: IHC-P.
<b>Target:</b>	mitogen-activated protein kinase kinase 6 (MAP2K6)
<b>Synonyms:</b>	MAP2K6 Antibody, Mapk kinase 6 Antibody, MAPK/ERK kinase 6 Antibody, MEK6 Antibody, SAPKK3 Antibody, SAPKK-3 Antibody, MAP kinase kinase 6 Antibody, MAPKK6 Antibody, PRKMK6 Antibody, MAPKK 6 Antibody, MEK 6 Antibody, MKK6 Antibody, SAPK kinase 3 Antibody, SKK3 Antibody
<b>Family / Subfamily:</b>	Protein Kinase / MAP2K
<b>Host</b>	MAP2K6 antibody was produced in Rabbit
<b>Clonality:</b>	Polyclonal
<b>Isotype:</b>	IgG
<b>Immunogen Species:</b>	MAP2K6 / MEK6 antibody was raised against Mouse
<b>Immunogen:</b>	MAP2K6 / MEK6 antibody was raised against recombinant mouse MAP2K6 / MEK6.
<b>Specificity:</b>	Recombinant (partial), N-terminal.
<b>Epitope:</b>	N-Terminus
<b>Reactivity:</b>	Mouse, Human
<b>Purification:</b>	Affinity purified
<b>Presentation:</b>	Phosphate-buffered solution, pH 7.2, 0.09% sodium azide, 50% glycerol.
<b>Recommended Storage:</b>	Aliquot and store at -20°C. Minimize freezing and thawing.
<b>Usage Summary:</b>	Immunohistochemistry: LS-B2006 was validated for use in immunohistochemistry on a panel of 21 formalin-fixed, paraffin-embedded (FFPE) human tissues after heat induced antigen retrieval in pH 6.0 citrate buffer. After incubation with the primary antibody, slides were incubated with biotinylated secondary antibody, followed by alkaline phosphatase-streptavidin and chromogen. The stained slides were evaluated by a pathologist to confirm staining specificity. The optimal working concentration for LS-B2006 was determined to be 1:50.
<b>Uses:</b>	IHC - Paraffin (1:50), Western blot (Optimal dilution to be determined by the researcher)
<b>Size:</b>	50 µl

**Immunohistochemistry Image:**



Anti-MAP2K6 / MEK6 antibody IHC of human skeletal muscle. Immunohistochemistry of formalin-fixed, paraffin-embedded tissue after heat-induced antigen retrieval. Antibody LS-B2006 dilution 1:50.

**Western Blot Image:**



Jurkat cell extract was resolved by electrophoresis, transferred to nitrocellulose, and probed with rabbit anti-MKK6 antibody. Proteins were visualized using a donkey anti-rabbit secondary conjugated to HRP and a chemiluminescence detection system.

<b>Requested From:</b>	Japan
Laboratory Reagent For In Vitro Research Use Only	
Not for resale without prior written consent from LifeSpan BioSciences, Inc.	
Created on 9/23/2014	
© 2014 LifeSpan BioSciences	