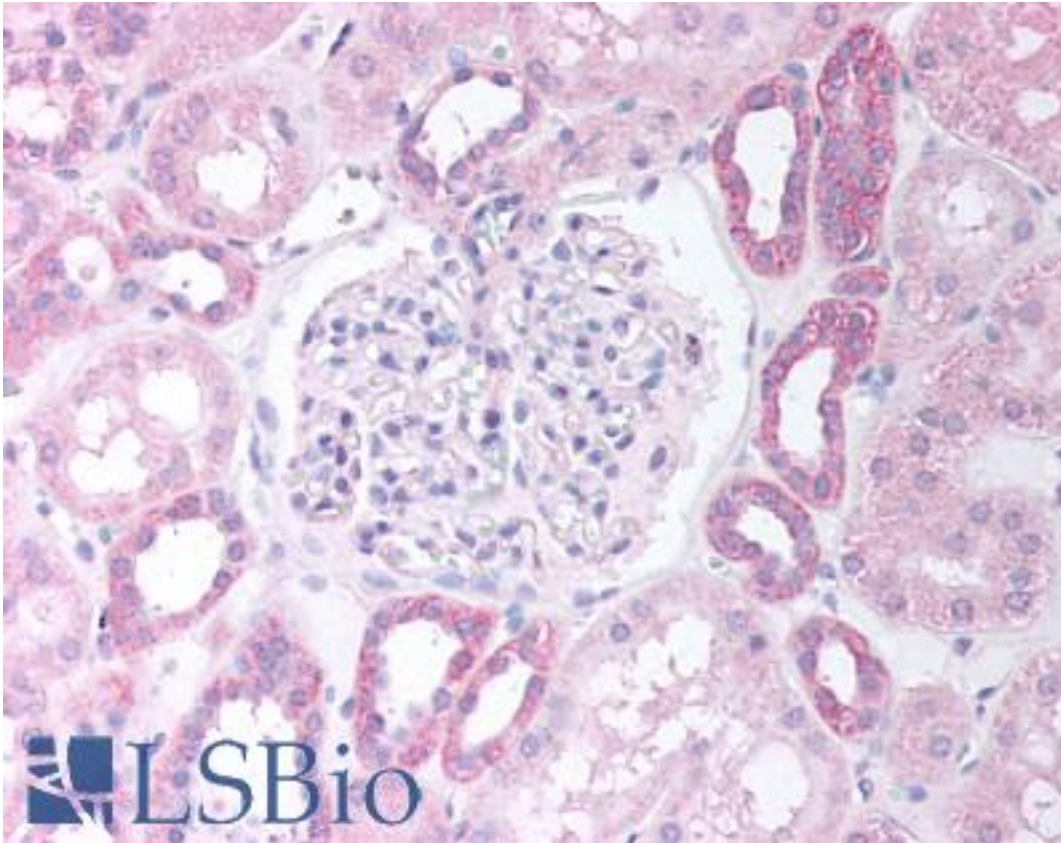


PAX8 Goat anti-Human Polyclonal (N-Terminus) Antibody - LS-B2 - LSBio	
CatalogID:	LS-B2
Target:	paired box 8 (PAX8)
Synonyms:	PAX8 Antibody, Paired box 8 Antibody, Paired domain gene 8 Antibody, Paired box gene 8 Antibody, Paired box protein Pax-8 Antibody
Host	PAX8 antibody was produced in Goat
Clonality:	Polyclonal
Immunogen Species:	PAX8 antibody was raised against Human
Antigen Type:	Synthetic peptide
Immunogen:	PAX8 antibody was raised against synthetic peptide PHNSIRSGHGGLN-C from the N-terminus of human PAX8 (NP_003457.1; NP_039245.1; NP_039246.1; NP_039247.1; NP_054698.1). Percent identity by BLAST analysis: Human, Gorilla, Orangutan, Gibbon, Monkey, Marmoset, Mouse, Rat, Dog, Elephant, Rabbit, Opossum, Platypus (100%).
Specificity:	Human PAX8. This antibody is expected to recognise all five human isoforms (as represented by NP_003457.1; NP_039245.1; NP_039246.1; NP_039247.1; NP_054698.1)
Epitope:	N-Terminus
Reactivity:	Human, Gorilla, Orangutan, Gibbon, Monkey, Mouse, Rat, Dog, Rabbit
Purification:	Immunoaffinity purified
Presentation:	Tris-buffered saline, pH 7.3, 0.5% BSA, 0.02% sodium azide
Recommended Storage:	Store at -20°C. Minimize freezing and thawing.
Usage Summary:	Immunohistochemistry: LS-B2 was validated for use in immunohistochemistry on a panel of 21 formalin-fixed, paraffin-embedded (FFPE) human tissues after heat induced antigen retrieval in pH 6.0 citrate buffer. After incubation with the primary antibody, slides were incubated with biotinylated secondary antibody, followed by alkaline phosphatase-streptavidin and chromogen. The stained slides were evaluated by a pathologist to confirm staining specificity. The optimal working concentration for LS-B2 was determined to be 2.5 ug/ml.
Uses:	IHC - Paraffin (2.5 µg/ml), Western blot (1 - 3 µg/ml), ELISA (1:32000) (Optimal dilution to be determined by the researcher)
Size:	50 µg
Concentration:	0.5 mg/ml

Immunohistochemistry Image:



Anti-PAX8 antibody IHC of human kidney cortex. Immunohistochemistry of formalin-fixed, paraffin-embedded tissue after heat-induced antigen retrieval. Antibody LS-B2 concentration 5 ug/ml.

Requested From:

Japan

Laboratory Reagent For In Vitro Research Use Only

Not for resale without prior written consent from LifeSpan BioSciences, Inc.

Created on 9/23/2014

© 2014 LifeSpan BioSciences