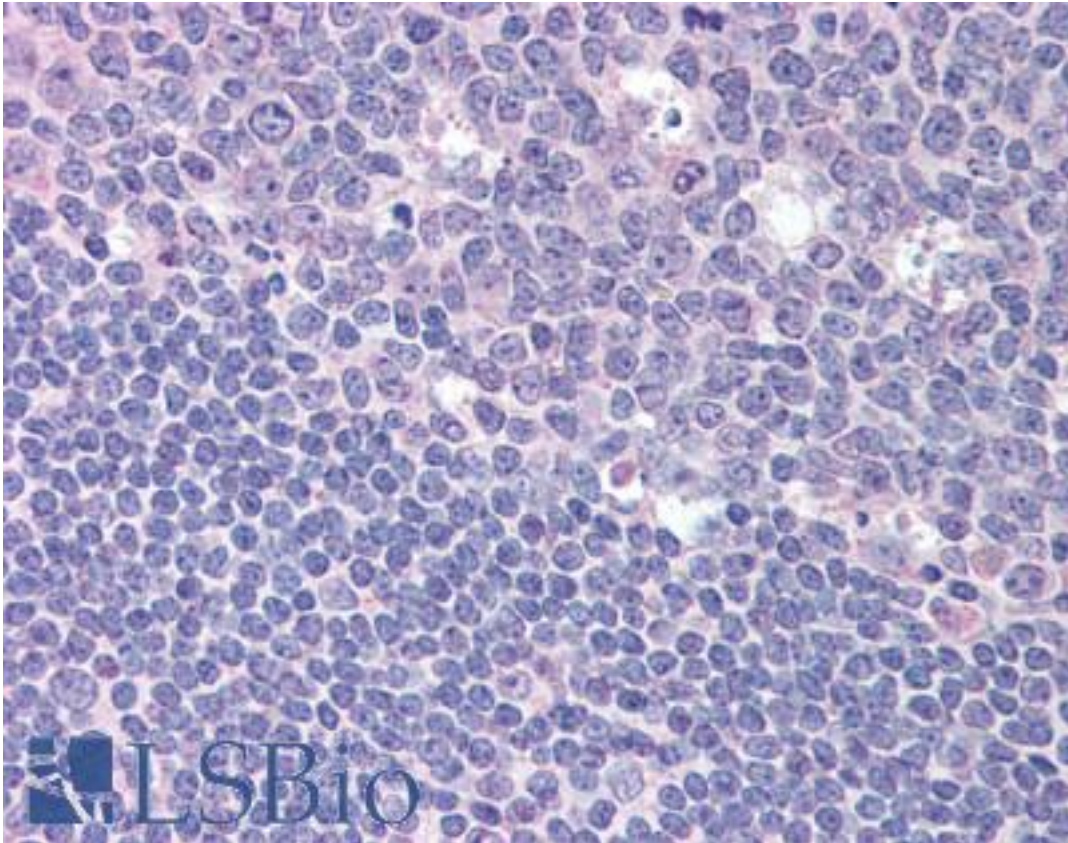


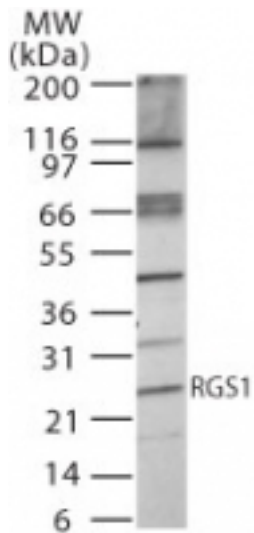
RGS1 Rabbit anti-Human Polyclonal (aa1-50) Antibody - LS-B1984 - LSBio	
<b>CatalogID:</b>	LS-B1984
<b>Validation:</b>	This antibody replaces catalog number LS-C786. It has been validated for use in the following assays: IHC.
<b>Target:</b>	regulator of G-protein signaling 1 (RGS1)
<b>Synonyms:</b>	RGS1 Antibody, 1R20 Antibody, B-cell activation protein BL34 Antibody, BL34 Antibody, Early response protein 1R20 Antibody, IER1 Antibody, IR20 Antibody
<b>Family / Subfamily:</b>	Regulator of G-protein signalling
<b>Host</b>	RGS1 antibody was produced in Rabbit
<b>Clonality:</b>	Polyclonal
<b>Isotype:</b>	IgG
<b>Immunogen Species:</b>	RGS1 antibody was raised against Human
<b>Antigen Type:</b>	Synthetic peptide
<b>Immunogen:</b>	RGS1 antibody was raised against synthetic peptide from human RGS1.
<b>Specificity:</b>	A synthetic peptide within amino acid residues 1-50 of human RGS1 was used as immunogen.
<b>Epitope:</b>	aa1-50
<b>Reactivity:</b>	Human
<b>Purification:</b>	Protein G purified
<b>Presentation:</b>	PBS, 0.2% gelatin, 0.05% sodium azide.
<b>Recommended Storage:</b>	Short term 4°C, long term aliquot and store at -20°C, avoid freeze thaw cycles.
<b>Usage Summary:</b>	Immunohistochemistry: LS-B1984 was validated for use in immunohistochemistry on a panel of 21 formalin-fixed, paraffin-embedded (FFPE) human tissues after heat induced antigen retrieval in pH 6.0 citrate buffer. After incubation with the primary antibody, slides were incubated with biotinylated secondary antibody, followed by alkaline phosphatase-streptavidin and chromogen. The stained slides were evaluated by a pathologist to confirm staining specificity. The optimal working concentration for LS-B1984 was determined to be 20 ug/ml.
<b>Uses:</b>	IHC - Paraffin (20 µg/ml), Western blot (1 - 3 µg/ml) (Optimal dilution to be determined by the researcher)
<b>Size:</b>	50 µg
<b>Concentration:</b>	0.5 mg/ml

**Immunohistochemistry Image:**



Anti-RGS1 antibody IHC of human tonsil. Immunohistochemistry of formalin-fixed, paraffin-embedded tissue after heat-induced antigen retrieval. Antibody LS-B1984 concentration 20 ug/ml.

**Western Blot Image:**



Western blot of RGS1 in Jurkat cell lysate using antibody at 2 ug/ml.

**Requested From:**

Japan

Laboratory Reagent For In Vitro Research Use Only

Not for resale without prior written consent from LifeSpan BioSciences, Inc.

Created on 9/23/2014

© 2014 LifeSpan BioSciences