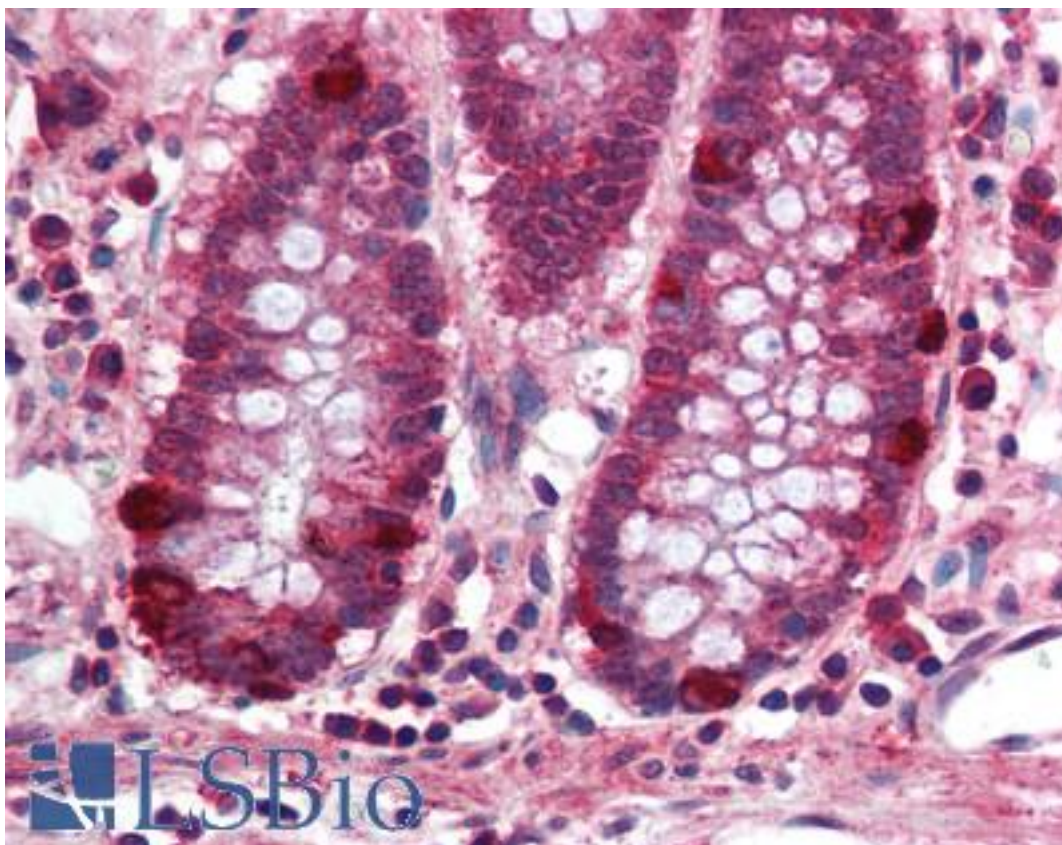


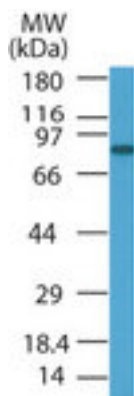
PRDM5 Rabbit anti-Human Polyclonal (aa100-200) Antibody - LS-B1982 - LSBio	
CatalogID:	LS-B1982
Validation:	This antibody replaces catalog number LS-C846. It has been validated for use in the following assays: IHC.
Target:	PR domain containing 5 (PRDM5)
Synonyms:	PRDM5 Antibody, BCS2 Antibody, PFM2 Antibody, PR domain containing 5 Antibody, PR domain-containing protein 5 Antibody
Host	PRDM5 antibody was produced in Rabbit
Clonality:	Polyclonal
Immunogen Species:	PRDM5 antibody was raised against Human
Antigen Type:	Synthetic peptide
Immunogen:	PRDM5 antibody was raised against synthetic peptide from human PRDM5.
Specificity:	A portion of amino acids 100-200 of human PRDM5 protein was used as the immunogen.
Epitope:	aa100-200
Reactivity:	Human
Purification:	Protein G purified
Presentation:	PBS, 0.2% gelatin, 0.05% sodium azide.
Recommended Storage:	Short term 4°C, long term aliquot and store at -20°C, avoid freeze thaw cycles.
Usage Summary:	Immunohistochemistry: LS-B1982 was validated for use in immunohistochemistry on a panel of 21 formalin-fixed, paraffin-embedded (FFPE) human tissues after heat induced antigen retrieval in pH 6.0 citrate buffer. After incubation with the primary antibody, slides were incubated with biotinylated secondary antibody, followed by alkaline phosphatase-streptavidin and chromogen. The stained slides were evaluated by a pathologist to confirm staining specificity. The optimal working concentration for LS-B1982 was determined to be 5 ug/ml.
Uses:	IHC - Paraffin (5 µg/ml), Western blot (1 - 3 µg/ml) (Optimal dilution to be determined by the researcher)
Size:	50 µg
Concentration:	0.5 mg/ml

Immunohistochemistry Image:



Anti-PRDM5 antibody IHC of human colon. Immunohistochemistry of formalin-fixed, paraffin-embedded tissue after heat-induced antigen retrieval. Antibody LS-B1982 concentration 5 ug/ml.

Western Blot Image:



Western blot of PRDM5 in HL60 cell lysate using antibody at 1 ug/ml.

Requested From:

Japan

Laboratory Reagent For In Vitro Research Use Only

Not for resale without prior written consent from LifeSpan BioSciences, Inc.

Created on 9/23/2014

© 2014 LifeSpan BioSciences