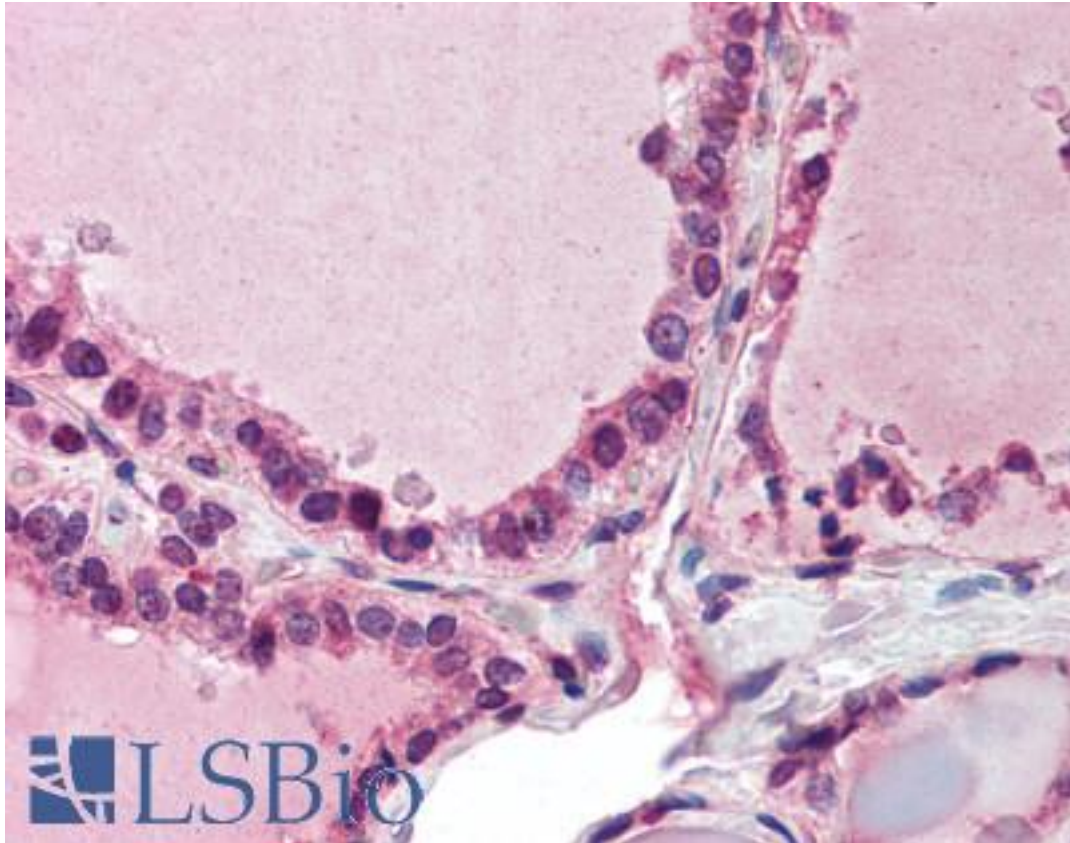


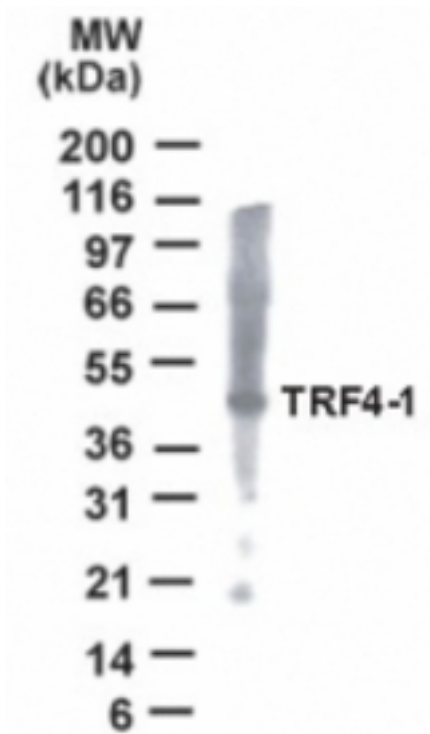
PAPD7 / TRF4-1 Rabbit anti-Human Polyclonal (aa447-462) Antibody - LS-B1981 - LSBio	
<b>CatalogID:</b>	LS-B1981
<b>Validation:</b>	This antibody replaces catalog number LS-C833. It has been validated for use in the following assays: IHC.
<b>Target:</b>	PAP associated domain containing 7 (PAPD7)
<b>Synonyms:</b>	PAPD7 Antibody, DNA polymerase kappa Antibody, DNA polymerase sigma Antibody, LAK1 Antibody, POLS Antibody, LAK-1 Antibody, Terminal uridylyltransferase 5 Antibody, TRF4 Antibody, TUTase 5 Antibody, TRF4-1 Antibody, TRF41 Antibody, TUTASE5 Antibody
<b>Host</b>	PAPD7 antibody was produced in Rabbit
<b>Clonality:</b>	Polyclonal
<b>Isotype:</b>	IgG
<b>Immunogen Species:</b>	PAPD7 / TRF4-1 antibody was raised against Human
<b>Antigen Type:</b>	Synthetic peptide
<b>Immunogen:</b>	PAPD7 / TRF4-1 antibody was raised against this antibody was generated by immunizing rabbits with a synthetic peptide containing amino acids 447-462 (GTASLKAVHHMSSPAI) of human TRF4-1, GenBank no NP_008930.1. Percent identity by BLAST analysis: Human, Gorilla, Gibbon, Monkey (100%); Marmoset, Panda, Dog, Bat (88%); Hamster, Elephant, Rabbit, Horse, Opossum, Platypus (81%).
<b>Specificity:</b>	A synthetic peptide containing amino acids 447-462 of human TRF4-1.
<b>Epitope:</b>	aa447-462
<b>Reactivity:</b>	Human, Gorilla, Gibbon, Monkey
<b>Purification:</b>	Protein G purified
<b>Presentation:</b>	PBS containing 0.2% gelatin and 0.05% sodium azide
<b>Recommended Storage:</b>	Short term 4°C, long term aliquot and store at -20°C, avoid freeze thaw cycles.
<b>Usage Summary:</b>	Immunohistochemistry: LS-B1981 was validated for use in immunohistochemistry on a panel of 21 formalin-fixed, paraffin-embedded (FFPE) human tissues after heat induced antigen retrieval in pH 6.0 citrate buffer. After incubation with the primary antibody, slides were incubated with biotinylated secondary antibody, followed by alkaline phosphatase-streptavidin and chromogen. The stained slides were evaluated by a pathologist to confirm staining specificity. The optimal working concentration for LS-B1981 was determined to be 5 ug/ml.
<b>Uses:</b>	IHC - Paraffin (5 µg/ml), Western blot (1 - 2 µg/ml) (Optimal dilution to be determined by the researcher)
<b>Size:</b>	50 µg
<b>Concentration:</b>	0.5 mg/ml

**Immunohistochemistry Image:**



Anti-PAPD7 / POLS antibody IHC of human thyroid. Immunohistochemistry of formalin-fixed, paraffin-embedded tissue after heat-induced antigen retrieval. Antibody LS-B1981 concentration 5 ug/ml.

**Western Blot Image:**



Detection of TRF4-1 in HeLa cell lysate with anti-TRF4-1 antibody.

**Requested From:**

Japan

Laboratory Reagent For In Vitro Research Use Only

Not for resale without prior written consent from LifeSpan BioSciences, Inc.

Created on 9/23/2014

© 2014 LifeSpan BioSciences