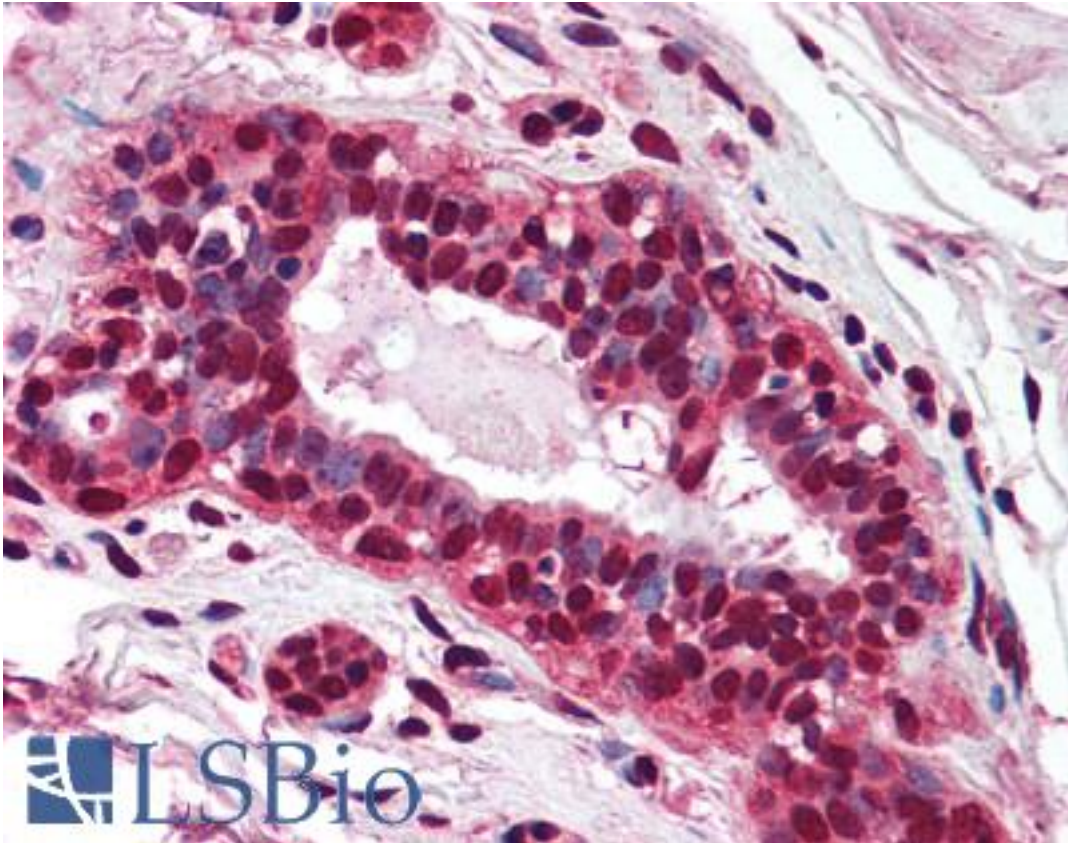


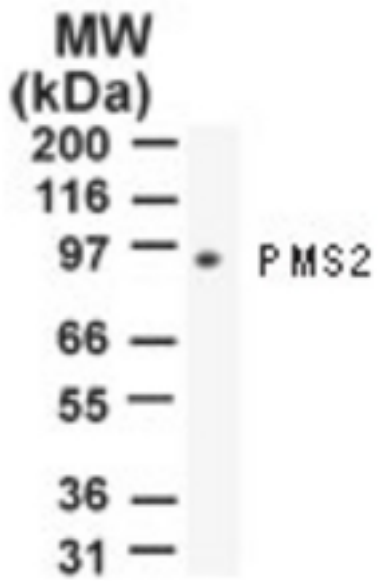
PMS2 Mouse anti-Human Monoclonal (aa623-639) (163C1251) Antibody - LS-B1980 - LSBio	
CatalogID:	LS-B1980
Validation:	This antibody replaces catalog number LS-C585. It has been validated for use in the following assays: IHC.
Target:	PMS2 postmeiotic segregation increased 2 (<i>S. cerevisiae</i>)
Synonyms:	PMS2 Antibody, HNPCC4 Antibody, H_DJ0042M02.9 Antibody, PMS2CL Antibody, PMSL2 Antibody, PMS1 protein homolog 2 Antibody
Host	PMS2 antibody was produced in Mouse
Clonality:	Monoclonal
Isotype:	IgG1
Clone Name:	163C1251
Immunogen Species:	PMS2 antibody was raised against Human
Antigen Type:	Synthetic peptide
Immunogen:	PMS2 antibody was raised against this antibody was generated by immunizing mice with a synthetic peptide corresponding to amino acids 623-639 SSLAKRIKQLHHEAQQS of human PMS2; GenBank No. NP_000526.1. Percent identity by BLAST analysis: Human, Gorilla, Gibbon (100%).
Specificity:	A synthetic peptide corresponding to amino acids 623-639 SSLAKRIKQLHHEAQQS of human PMS2; GenBank No. NP_000526.1.
Epitope:	aa623-639
Reactivity:	Human, Gorilla, Gibbon
Purification:	Protein G purified
Presentation:	PBS, 0.02% sodium azide.
Recommended Storage:	Short term 4°C, long term aliquot and store at -20°C, avoid freeze thaw cycles.
Usage Summary:	Immunohistochemistry: LS-B1980 was validated for use in immunohistochemistry on a panel of 21 formalin-fixed, paraffin-embedded (FFPE) human tissues after heat induced antigen retrieval in pH 6.0 citrate buffer. After incubation with the primary antibody, slides were incubated with biotinylated secondary antibody, followed by alkaline phosphatase-streptavidin and chromogen. The stained slides were evaluated by a pathologist to confirm staining specificity. The optimal working concentration for LS-B1980 was determined to be 5 ug/ml.
Uses:	IHC - Paraffin (5 µg/ml), Western blot (1 - 2 µg/ml) (Optimal dilution to be determined by the researcher)
Size:	50 µg
Concentration:	0.5 mg/ml

Immunohistochemistry Image:



Anti-PMS2 antibody IHC of human breast. Immunohistochemistry of formalin-fixed, paraffin-embedded tissue after heat-induced antigen retrieval. Antibody LS-B1980 concentration 5 ug/ml.

Western Blot Image:



Western blot of PMS2 using antibody at 2 ug/ml against 10 ug of NIH 3T3 cell lysate.

Requested From:	Japan
Laboratory Reagent For In Vitro Research Use Only	
Not for resale without prior written consent from LifeSpan BioSciences, Inc.	
Created on 9/23/2014	
© 2014 LifeSpan BioSciences	