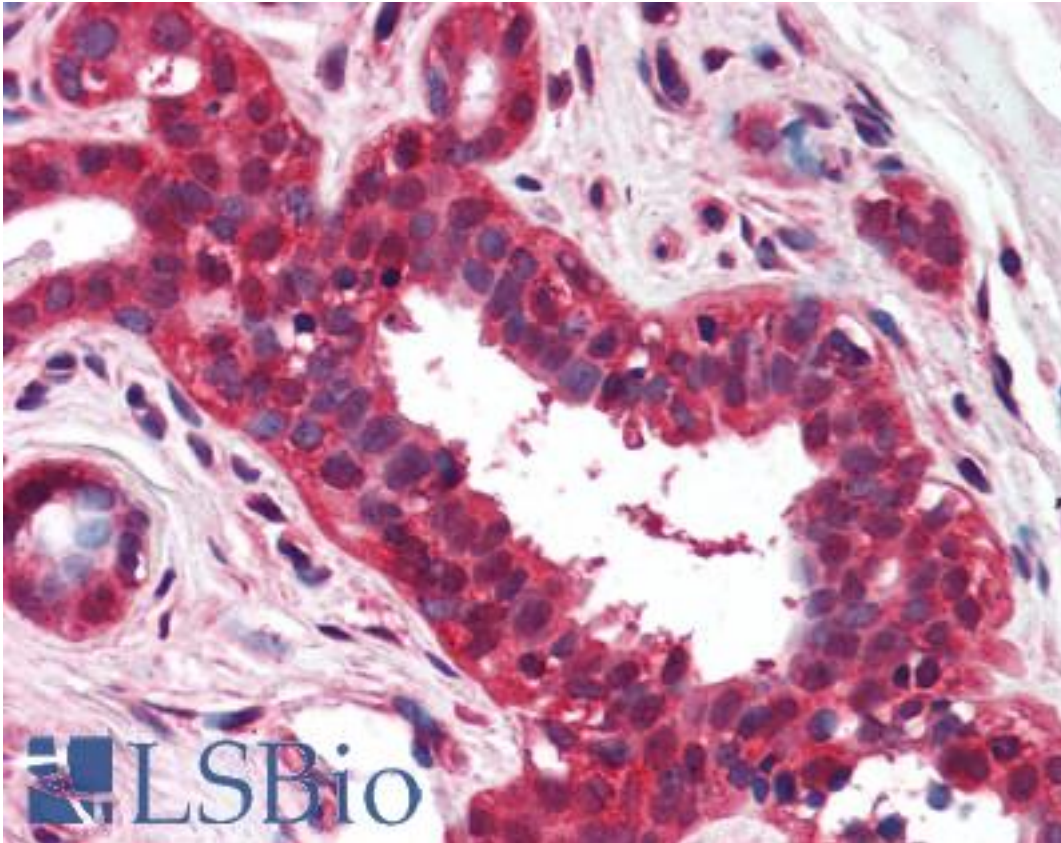


NKIRAS1 Mouse anti-Human Monoclonal (aa96-113) (184C278) Antibody - LS-B1978 - LSBio	
<b>CatalogID:</b>	LS-B1978
<b>Validation:</b>	This antibody replaces catalog number LS-C560. It has been validated for use in the following assays: IHC.
<b>Target:</b>	NFKB inhibitor interacting Ras-like 1 (NKIRAS1)
<b>Synonyms:</b>	NKIRAS1 Antibody, Kappa B-Ras protein 1 Antibody, Kappa B-ras 1 Antibody, KappaB-Ras1 Antibody, KBRAS1 Antibody
<b>Family / Subfamily:</b>	Ras GTPase superfamily IPR001806 / not assigned-Ras GTPase superfamily IPR001806
<b>Host</b>	NKIRAS1 antibody was produced in Mouse
<b>Clonality:</b>	Monoclonal
<b>Isotype:</b>	IgG1
<b>Clone Name:</b>	184C278
<b>Immunogen Species:</b>	NKIRAS1 antibody was raised against Human
<b>Antigen Type:</b>	Synthetic peptide
<b>Immunogen:</b>	NKIRAS1 antibody was raised against a synthetic peptide containing amino acid residues 96-113 (RVLLKKEIDKFKDKKEV) of human kB-Ras1. Percent identity by BLAST analysis: Human, Gorilla, Gibbon, Monkey, Marmoset, Mouse, Rat, Goat, Hamster, Elephant, Panda, Dog, Horse, Rabbit (100%); Bovine, Pig, Opossum, Turkey, Chicken (94%); Lizard, Xenopus (89%).
<b>Specificity:</b>	A synthetic peptide containing amino acid residues 96-113 of human kB-Ras1.
<b>Epitope:</b>	aa96-113
<b>Reactivity:</b>	Human, Gorilla, Gibbon, Monkey, Mouse, Rat, Dog, Goat, Hamster, Horse, Rabbit
<b>Predicted Reactivity:</b>	Bovine, Pig, Chicken
<b>Purification:</b>	Protein G purified
<b>Presentation:</b>	PBS, 0.02% sodium azide.
<b>Recommended Storage:</b>	Short term 4°C, long term aliquot and store at -20°C, avoid freeze thaw cycles.
<b>Usage Summary:</b>	Immunohistochemistry: LS-B1978 was validated for use in immunohistochemistry on a panel of 21 formalin-fixed, paraffin-embedded (FFPE) human tissues after heat induced antigen retrieval in pH 6.0 citrate buffer. After incubation with the primary antibody, slides were incubated with biotinylated secondary antibody, followed by alkaline phosphatase-streptavidin and chromogen. The stained slides were evaluated by a pathologist to confirm staining specificity. The optimal working concentration for LS-B1978 was determined to be 5 µg/ml.
<b>Uses:</b>	IHC - Paraffin (5 µg/ml), Western blot (0.5 - 1 µg/ml) (Optimal dilution to be determined by the researcher)
<b>Size:</b>	50 µg
<b>Concentration:</b>	0.5 mg/ml

**Immunohistochemistry Image:**



Anti-NKIRAS1 antibody IHC of human breast. Immunohistochemistry of formalin-fixed, paraffin-embedded tissue after heat-induced antigen retrieval. Antibody LS-B1978 concentration 5 ug/ml.

**Requested From:**

Japan

Laboratory Reagent For In Vitro Research Use Only

Not for resale without prior written consent from LifeSpan BioSciences, Inc.

Created on 9/23/2014

© 2014 LifeSpan BioSciences