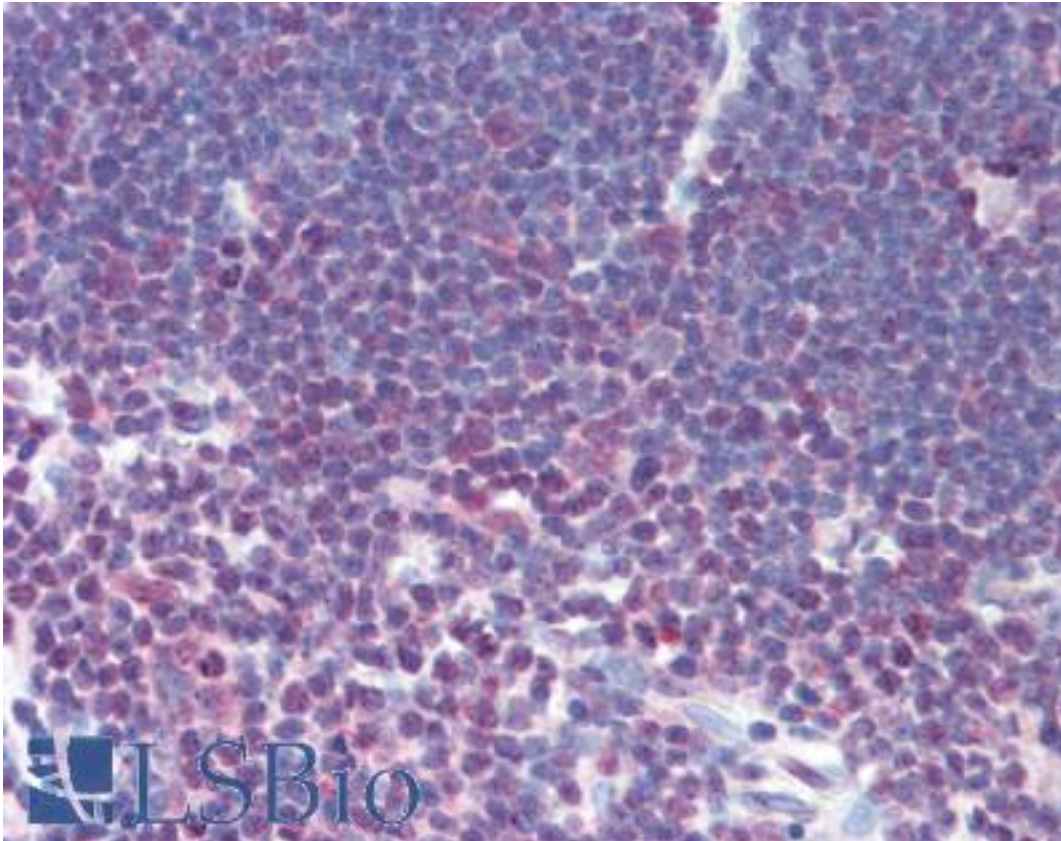


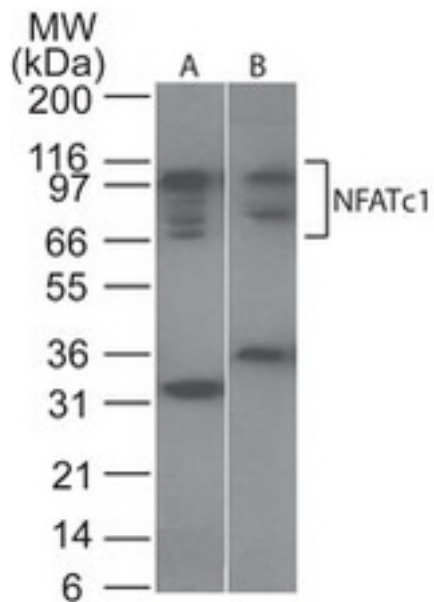
NFATC1 Rabbit anti-Human Polyclonal (aa263-282) Antibody - LS-B1977 - LSBio	
CatalogID:	LS-B1977
Validation:	This antibody replaces catalog number LS-C763. It has been validated for use in the following assays: IHC.
Target:	nuclear factor of activated T-cells, cytoplasmic, calcineurin-dependent 1 (NFATC1)
Synonyms:	NFATC1 Antibody, NFATc Antibody, NFAT2 Antibody, NF-ATC Antibody, NF-ATC transcription factor Antibody, NF-ATc1 Antibody
Host	NFATC1 antibody was produced in Rabbit
Clonality:	Polyclonal
Isotype:	IgG
Immunogen Species:	NFATC1 antibody was raised against Human
Immunogen:	NFATC1 antibody was raised against amino acids 264-282 (NKRKYSLNQRQPPYSPHHS) of human NFATc1 were used as immunogen for this antibody. Percent identity by BLAST analysis: Human, Gorilla, Gibbon, Monkey (100%); Mouse, Rat, Rabbit, Turkey, Chicken, Lizard (89%); Marmoset, Opossum, Xenopus (84%).
Specificity:	Amino acids 263-282 (NKRKYSLNQRQPPYSPHHS) of human NFATc1 (NP_006153) were used as immunogen.
Epitope:	aa263-282
Reactivity:	Human, Gorilla, Gibbon, Monkey
Purification:	Protein G purified
Presentation:	PBS, 0.05% BSA, 0.05% sodium azide.
Recommended Storage:	Short term 4°C, long term aliquot and store at -20°C, avoid freeze thaw cycles.
Usage Summary:	Immunohistochemistry: LS-B1977 was validated for use in immunohistochemistry on a panel of 21 formalin-fixed, paraffin-embedded (FFPE) human tissues after heat induced antigen retrieval in pH 6.0 citrate buffer. After incubation with the primary antibody, slides were incubated with biotinylated secondary antibody, followed by alkaline phosphatase-streptavidin and chromogen. The stained slides were evaluated by a pathologist to confirm staining specificity. The optimal working concentration for LS-B1977 was determined to be 10 ug/ml.
Uses:	IHC - Paraffin (10 µg/ml), Western blot (1 - 3 µg/ml) (Optimal dilution to be determined by the researcher)
Size:	50 µg
Concentration:	0.5 mg/ml

Immunohistochemistry Image:



Anti-NFATc1 antibody IHC of human thymus. Immunohistochemistry of formalin-fixed, paraffin-embedded tissue after heat-induced antigen retrieval. Antibody LS-B1977 concentration 10 ug/ml.

Western Blot Image:



Western blot of NFATc1 in Ramos cell lysate. Lane 1. Without blocking peptide. Lane 2. With blocking peptide.

Requested From:	Japan
Laboratory Reagent For In Vitro Research Use Only	
Not for resale without prior written consent from LifeSpan BioSciences, Inc.	
Created on 9/23/2014	
© 2014 LifeSpan BioSciences	