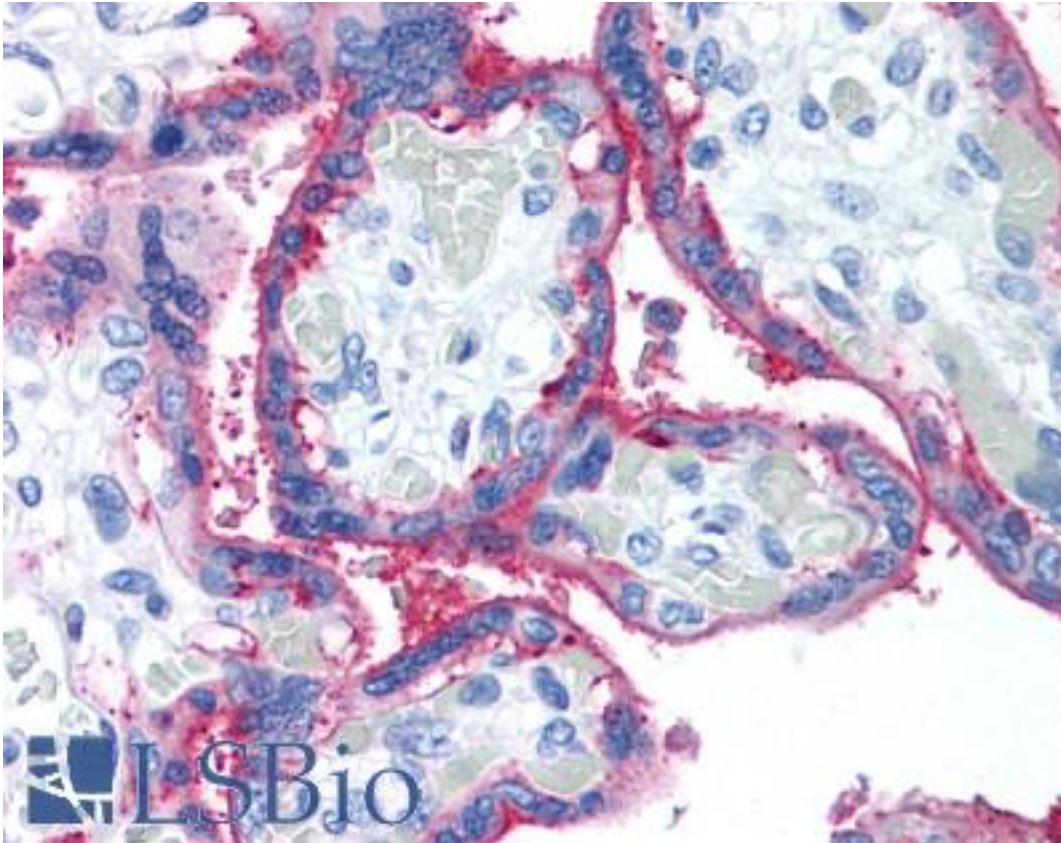


**CD59 Mouse anti-Human Monoclonal (p282(H19)) Antibody - LS-B1960 - LSBio**

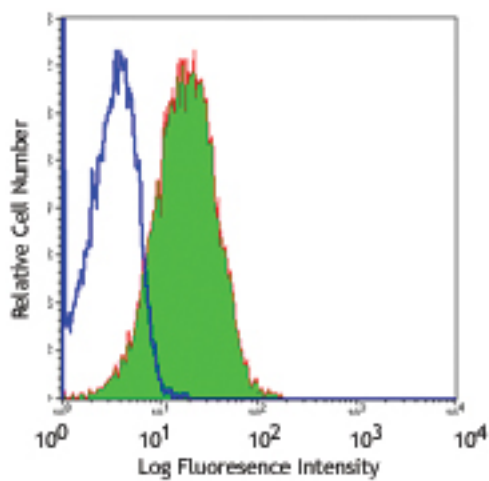
<b>CatalogID:</b>	LS-B1960
<b>Validation:</b>	This antibody replaces catalog number LS-C41091. It has been validated for use in the following assays: IHC.
<b>Target:</b>	CD59 molecule, complement regulatory protein
<b>Synonyms:</b>	CD59 Antibody, 16.3A5 Antibody, 1F5 Antibody, 1F5 antigen Antibody, CD59 glycoprotein Antibody, EL32 Antibody, EJ16 Antibody, G344 Antibody, HRF-20 Antibody, MAC-IP Antibody, MACIF Antibody, Ly-6-like protein Antibody, MEM43 Antibody, MIRL Antibody, MEM43 antigen Antibody, MIN2 Antibody, MIN3 Antibody, MSK21 Antibody, p18-20 Antibody, Protectin Antibody, MAC-inhibitory protein Antibody, MIC11 Antibody, T cell-activating protein Antibody, CD59 antigen Antibody, EJ30 Antibody, HRF20 Antibody, Human leukocyte antigen MIC11 Antibody, Lymphocytic antigen CD59/MEM43 Antibody, MIN1 Antibody
<b>Host</b>	CD59 antibody was produced in Mouse
<b>Clonality:</b>	Monoclonal
<b>Isotype:</b>	IgG2a,k
<b>Clone Name:</b>	p282(H19)
<b>Immunogen Species:</b>	CD59 antibody was raised against Human
<b>Reactivity:</b>	Human, Chimpanzee, Baboon, Monkey
<b>Purification:</b>	Affinity purified
<b>Presentation:</b>	Phosphate-buffered solution, pH 7.2, 0.09% sodium azide. Sourced in TCS.
<b>Recommended Storage:</b>	+4°C. Store undiluted.
<b>Usage Summary:</b>	Immunohistochemistry: LS-B1960 was validated for use in immunohistochemistry on a panel of 21 formalin-fixed, paraffin-embedded (FFPE) human tissues after heat induced antigen retrieval in pH 6.0 citrate buffer. After incubation with the primary antibody, slides were incubated with biotinylated secondary antibody, followed by alkaline phosphatase-streptavidin and chromogen. The stained slides were evaluated by a pathologist to confirm staining specificity. The optimal working concentration for LS-B1960 was determined to be 10 ug/ml.
<b>Uses:</b>	IHC - Paraffin (10 µg/ml), Flow Cytometry (2 µg/10E6 cells) (Optimal dilution to be determined by the researcher)
<b>Size:</b>	50 µg
<b>Concentration:</b>	0.5 mg/ml

**Immunohistochemistry Image:**



Anti-CD59 antibody IHC of human placenta. Immunohistochemistry of formalin-fixed, paraffin-embedded tissue after heat-induced antigen retrieval. Antibody LS-B1960 concentration 10 ug/ml.

**Flow Cytometry Image:**



Human peripheral blood lymphocytes stained with purified p282, followed by anti-mouse IgGs FITC

Requested From:

Japan

Laboratory Reagent For In Vitro Research Use Only

Not for resale without prior written consent from LifeSpan BioSciences, Inc.

Created on 9/23/2014

© 2014 LifeSpan BioSciences