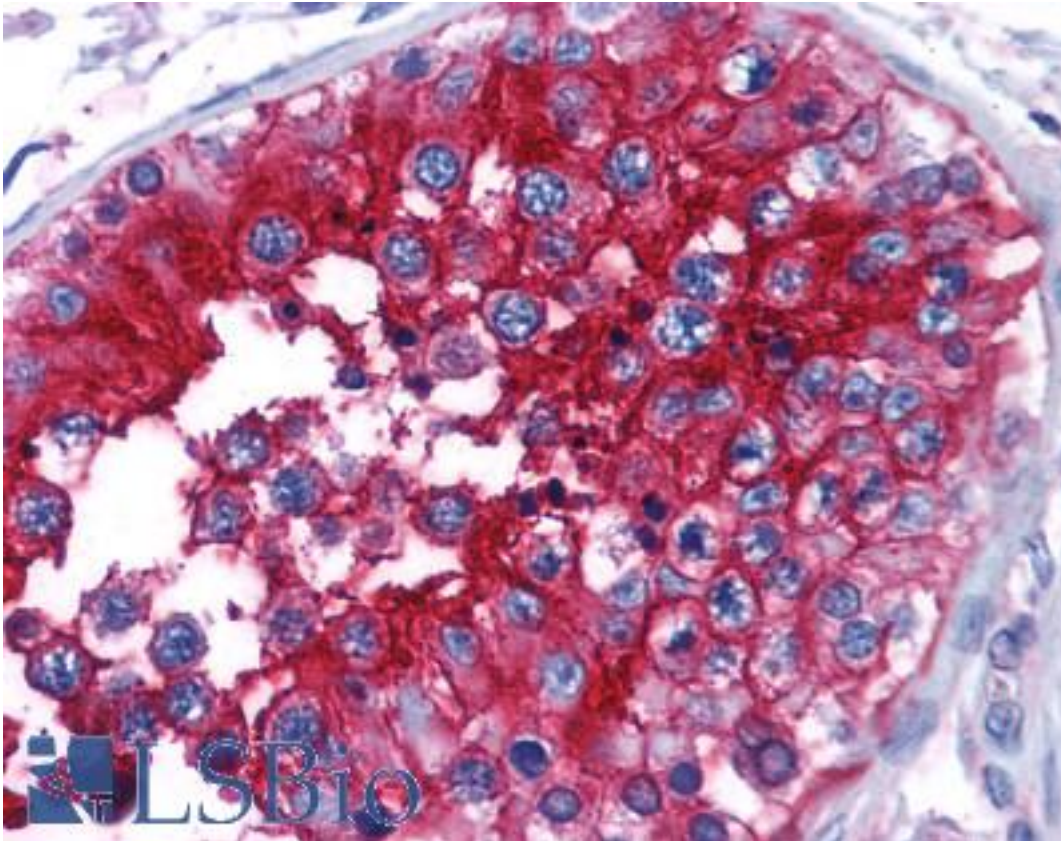


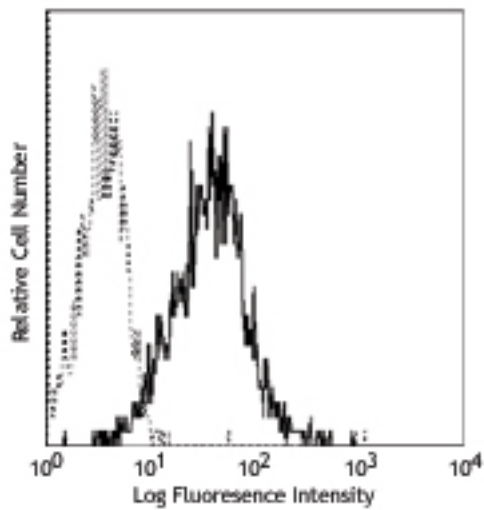
Basigin / Emmprin / CD147 Mouse anti-Human Monoclonal (HIM6) Antibody - LS-B1950 - LSBio	
<b>CatalogID:</b>	LS-B1950
<b>Validation:</b>	This antibody replaces catalog number LS-C40983. It has been validated for use in the following assays: IHC.
<b>Target:</b>	basigin (Ok blood group) (BSG)
<b>Synonyms:</b>	BSG Antibody, 5F7 Antibody, Basigin Antibody, Basigin (Ok blood group) Antibody, CD147 antigen Antibody, Collagenase stimulatory factor Antibody, EMMPRIN Antibody, OK Antibody, OK blood group antigen Antibody, TCSF Antibody, CD147 Antibody, M6 Antibody
<b>Host</b>	BSG antibody was produced in Mouse
<b>Clonality:</b>	Monoclonal
<b>Isotype:</b>	IgG1
<b>Clone Name:</b>	HIM6
<b>Immunogen Species:</b>	Basigin / Emmprin / CD147 antibody was raised against Human
<b>Reactivity:</b>	Human
<b>Purification:</b>	Affinity purified
<b>Presentation:</b>	PBS, pH 7.2, 0.09% sodium azide.
<b>Recommended Storage:</b>	Store at 2-8°C.
<b>Usage Summary:</b>	Immunohistochemistry: LS-B1950 was validated for use in immunohistochemistry on a panel of 21 formalin-fixed, paraffin-embedded (FFPE) human tissues after heat induced antigen retrieval in pH 6.0 citrate buffer. After incubation with the primary antibody, slides were incubated with biotinylated secondary antibody, followed by alkaline phosphatase-streptavidin and chromogen. The stained slides were evaluated by a pathologist to confirm staining specificity. The optimal working concentration for LS-B1950 was determined to be 10 ug/ml.
<b>Uses:</b>	IHC - Paraffin (10 µg/ml), IHC - Frozen, Western blot, Flow Cytometry (0.5 µg/10E6 cells) (Optimal dilution to be determined by the researcher)
<b>Size:</b>	50 µg
<b>Concentration:</b>	0.5 mg/ml

**Immunohistochemistry Image:**



Anti-CD147 antibody IHC of human testis. Immunohistochemistry of formalin-fixed, paraffin-embedded tissue after heat-induced antigen retrieval. Antibody LS-B1950 concentration 10 ug/ml.

**Flow Cytometry Image:**



Human peripheral blood lymphocytes stained with purified HIM6, followed by anti-mouse IgG FITC

Requested From:

Japan

Laboratory Reagent For In Vitro Research Use Only

Not for resale without prior written consent from LifeSpan BioSciences, Inc.

Created on 9/23/2014

© 2014 LifeSpan BioSciences