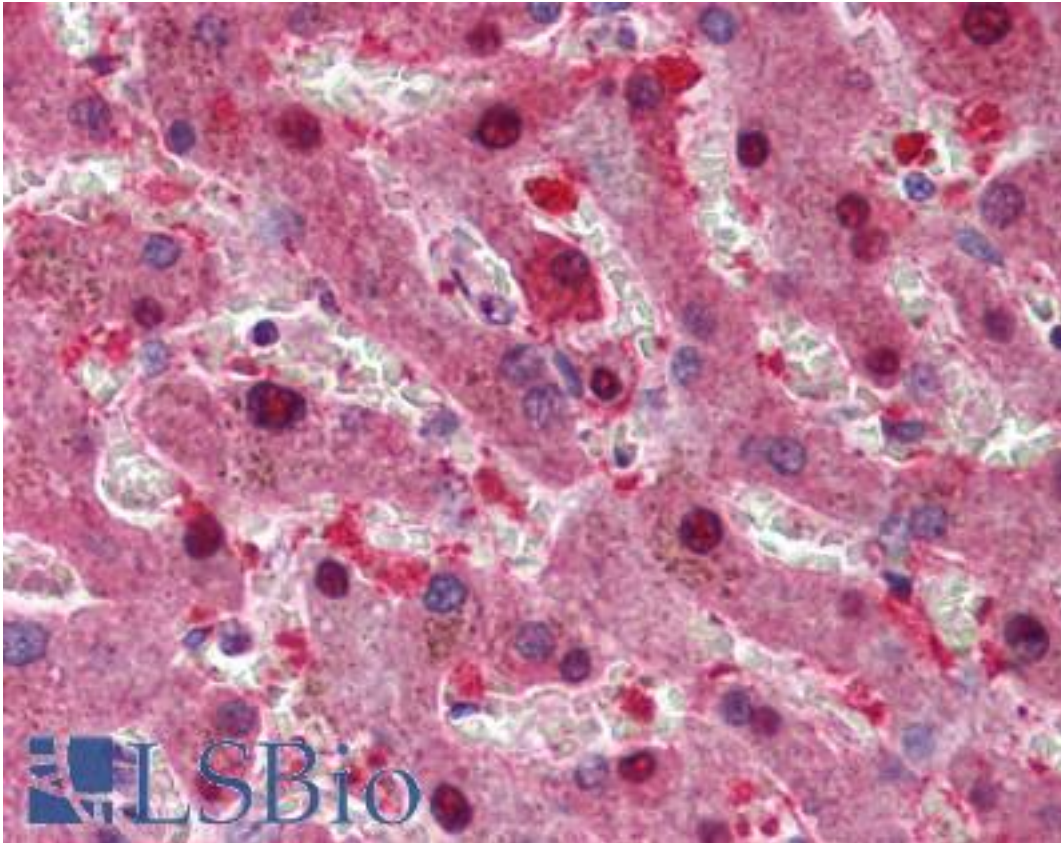


CDKN2A / p16INK4a Goat anti-Human Polyclonal (C-Terminus) Antibody - LS-B193 - LSBio	
CatalogID:	LS-B193
Validation:	This antibody replaces catalog number LS-C20142. It has been validated for use in the following assays: IHC.
Target:	cyclin-dependent kinase inhibitor 2A (CDKN2A)
Synonyms:	CDKN2A Antibody, ARF Antibody, Cdk4 inhibitor Antibody, CDK4 inhibitor p16-INK4 Antibody, INK4 Antibody, INK4A Antibody, Multiple tumor suppressor 1 Antibody, MTS-1 Antibody, MTS1 Antibody, p16-INK4 Antibody, p16-INK4A Antibody, p16INK4 Antibody, p19 Antibody, p14 Antibody, p16 Antibody, p16 INK4A Antibody, p16INK4A Antibody, p14ARF Antibody, TP16 Antibody, CDK4I Antibody, CDKN2 Antibody, CMM2 Antibody, MLM Antibody, p19ARF Antibody
Host	CDKN2A antibody was produced in Goat
Clonality:	Polyclonal
Immunogen Species:	CDKN2A / p16INK4a antibody was raised against Human
Antigen Type:	Synthetic peptide
Immunogen:	CDKN2A / p16INK4a antibody was raised against synthetic peptide C-HARIDAAEGPSDIPD from the C-terminus of human CDKN2A (NP_000068.1; NP_001182061.1). Percent identity with other species by BLAST analysis: Human (100%), Gibbon (93%), Monkey (80%).
Specificity:	Human CDKN2A. This antibody is expected to recognise isoform p16INK4a (NP_000068.1) and isoform p16gamma (NP_001182061.1).
Epitope:	C-Terminus
Reactivity:	Human
Predicted Reactivity:	Gibbon
Purification:	Immunoaffinity purified
Presentation:	Tris-buffered saline, pH 7.3, 0.5% BSA, 0.02% sodium azide
Recommended Storage:	Store at -20°C. Minimize freezing and thawing.
Usage Summary:	Immunohistochemistry: LS-B193 was validated for use in immunohistochemistry on a panel of 21 formalin-fixed, paraffin-embedded (FFPE) human tissues after heat induced antigen retrieval in pH 6.0 citrate buffer. After incubation with the primary antibody, slides were incubated with biotinylated secondary antibody, followed by alkaline phosphatase-streptavidin and chromogen. The stained slides were evaluated by a pathologist to confirm staining specificity. The optimal working concentration for LS-B193 was determined to be 5 µg/ml.
Uses:	IHC - Paraffin (5 µg/ml), Western blot (0.1 - 1 µg/ml), ELISA (1:32000) (Optimal dilution to be determined by the researcher)
Size:	50 µg
Concentration:	0.5 mg/ml

Immunohistochemistry Image:



Anti-p16INK4A antibody IHC of human liver. Immunohistochemistry of formalin-fixed, paraffin-embedded tissue after heat-induced antigen retrieval. Antibody LS-B193 concentration 5 ug/ml.

Requested From:

Japan

Laboratory Reagent For In Vitro Research Use Only

Not for resale without prior written consent from LifeSpan BioSciences, Inc.

Created on 9/23/2014

© 2014 LifeSpan BioSciences