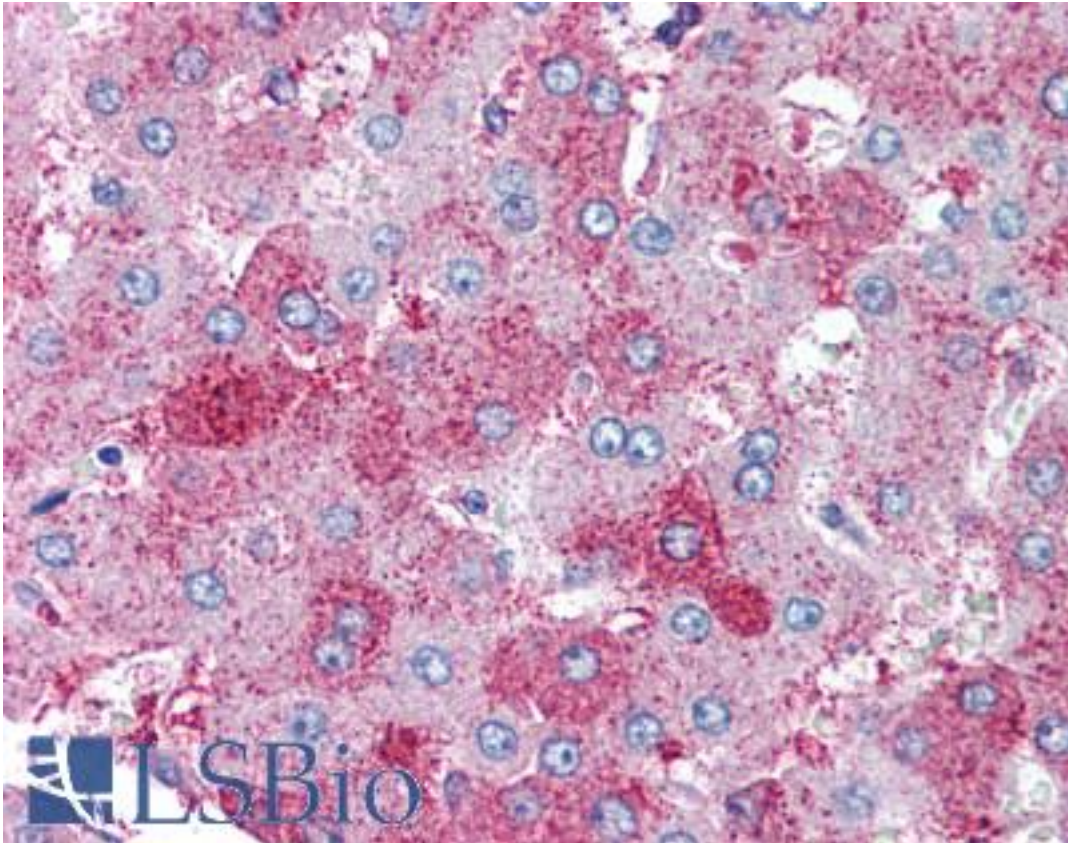


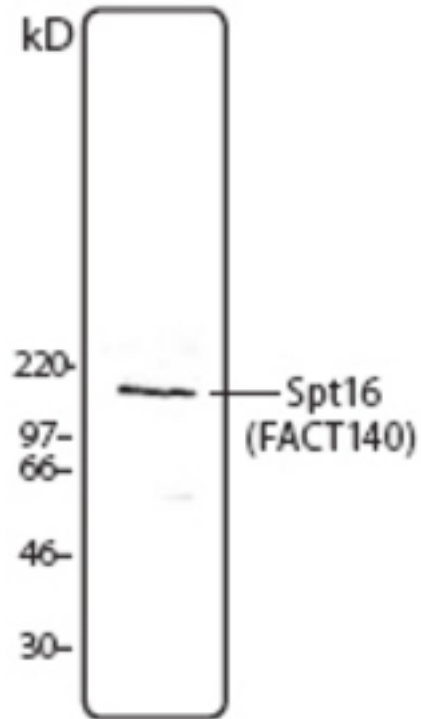
SUPT16H / FACTP140 Mouse anti-Human Monoclonal (8D2) Antibody - LS-B1906 - LSBio	
<b>CatalogID:</b>	LS-B1906
<b>Validation:</b>	This antibody replaces catalog number LS-C41103. It has been validated for use in the following assays: IHC.
<b>Target:</b>	suppressor of Ty 16 homolog (S. cerevisiae) (SUPT16H)
<b>Synonyms:</b>	SUPT16H Antibody, CDC68 Antibody, FACT140 Antibody, FACT Antibody, FACT complex subunit SPT16 Antibody, FACT 140 kDa subunit Antibody, HSPT16 Antibody, SPT16/CDC68 Antibody, FACTP140 Antibody
<b>Host</b>	SUPT16H antibody was produced in Mouse
<b>Clonality:</b>	Monoclonal
<b>Isotype:</b>	IgG2a
<b>Clone Name:</b>	8D2
<b>Immunogen Species:</b>	SUPT16H / FACTP140 antibody was raised against Human
<b>Immunogen:</b>	SUPT16H / FACTP140 antibody was raised against recombinant human SUPT16H.
<b>Specificity:</b>	Recombinant (partial)
<b>Reactivity:</b>	Human
<b>Purification:</b>	Affinity purified
<b>Presentation:</b>	Phosphate-buffered solution, pH 7.2, 0.09% sodium azide. The.
<b>Recommended Storage:</b>	Store at 4°C. Do not freeze.
<b>Usage Summary:</b>	Immunohistochemistry: LS-B1906 was validated for use in immunohistochemistry on a panel of 21 formalin-fixed, paraffin-embedded (FFPE) human tissues after heat induced antigen retrieval in pH 6.0 citrate buffer. After incubation with the primary antibody, slides were incubated with biotinylated secondary antibody, followed by alkaline phosphatase-streptavidin and chromogen. The stained slides were evaluated by a pathologist to confirm staining specificity. The optimal working concentration for LS-B1906 was determined to be 10 ug/ml.
<b>Uses:</b>	IHC - Paraffin (10 µg/ml), Western blot (Optimal dilution to be determined by the researcher)
<b>Size:</b>	50 µg
<b>Concentration:</b>	0.5 mg/ml

**Immunohistochemistry Image:**



Anti-SUPT16H antibody IHC of human liver. Immunohistochemistry of formalin-fixed, paraffin-embedded tissue after heat-induced antigen retrieval. Antibody LS-B1906 concentration 10 ug/ml.

**Western Blot Image:**



Hela cell extract was resolved by electrophoresis, transferred to nitrocellulose and probed with monoclonal anti-Spt16 (Clone 8D2) antibody. Proteins were visualized using a donkey anti-mouse secondary antibody conjugated to HRP and a chemiluminescence system.

**Requested From:**

Japan

Laboratory Reagent For In Vitro Research Use Only

Not for resale without prior written consent from LifeSpan BioSciences, Inc.

Created on 9/23/2014

© 2014 LifeSpan BioSciences