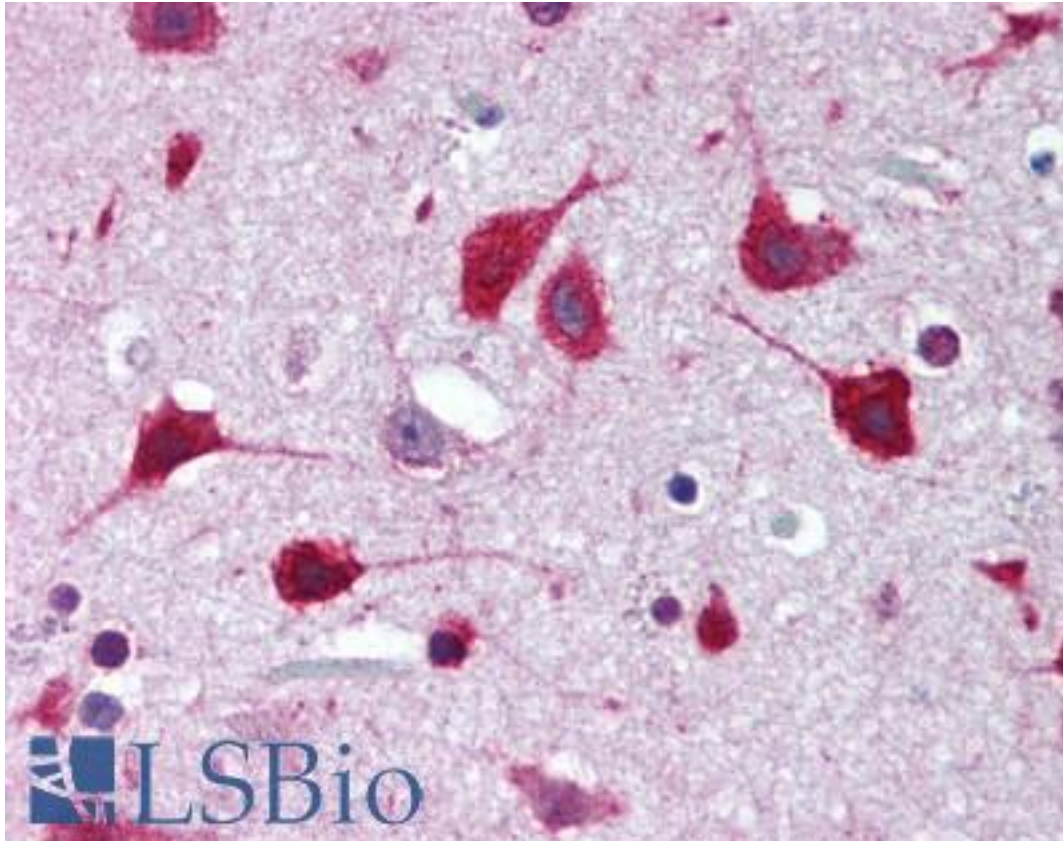


**SOX2 Rabbit anti-Human Polyclonal (N-Terminus) Antibody - LS-B1901 - LSBio**

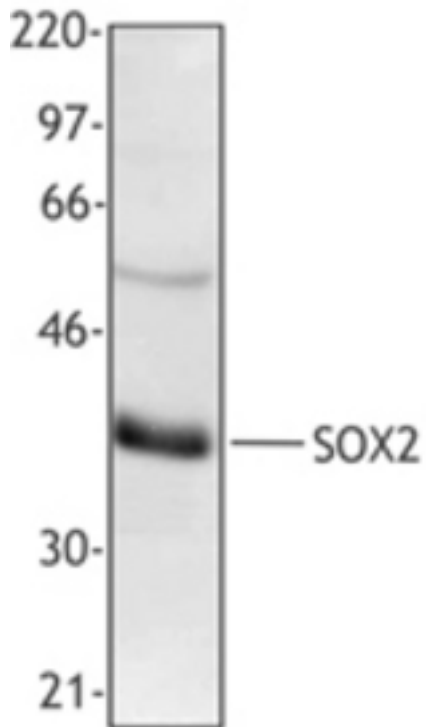
<b>CatalogID:</b>	LS-B1901
<b>Validation:</b>	This antibody replaces catalog number LS-C41160. It has been validated for use in the following assays: IHC.
<b>Target:</b>	SRY (sex determining region Y)-box 2 (SOX2)
<b>Synonyms:</b>	SOX2 Antibody, MCOPS3 Antibody, Transcription factor SOX2 Antibody, ANOP3 Antibody, Transcription factor SOX-2 Antibody, SRY-related HMG-box gene 2 Antibody
<b>Family / Subfamily:</b>	Transcription factor
<b>Host</b>	SOX2 antibody was produced in Rabbit
<b>Clonality:</b>	Polyclonal
<b>Isotype:</b>	IgG
<b>Immunogen Species:</b>	SOX2 antibody was raised against Human
<b>Antigen Type:</b>	Synthetic peptide
<b>Immunogen:</b>	SOX2 antibody was raised against synthetic peptide from human SOX2.
<b>Specificity:</b>	Peptide-KLH (N-terminal)
<b>Epitope:</b>	N-Terminus
<b>Reactivity:</b>	Human
<b>Purification:</b>	Immunoaffinity purified
<b>Presentation:</b>	Phosphate-buffered solution, pH 7.2, 0.09% sodium azide, 50% glycerol.
<b>Recommended Storage:</b>	+4°C or -20°C, Avoid repeated freezing and thawing.
<b>Usage Summary:</b>	Immunohistochemistry: LS-B1901 was validated for use in immunohistochemistry on a panel of 21 formalin-fixed, paraffin-embedded (FFPE) human tissues after heat induced antigen retrieval in pH 6.0 citrate buffer. After incubation with the primary antibody, slides were incubated with biotinylated secondary antibody, followed by alkaline phosphatase-streptavidin and chromogen. The stained slides were evaluated by a pathologist to confirm staining specificity. The optimal working concentration for LS-B1901 was determined to be 1:50.
<b>Uses:</b>	IHC - Paraffin (1:50), Western blot (Optimal dilution to be determined by the researcher)
<b>Size:</b>	50 µl
<b>Concentration:</b>	0.5 mg/ml

**Immunohistochemistry Image:**



Anti-SOX2 antibody IHC of human brain, cortex. Immunohistochemistry of formalin-fixed, paraffin-embedded tissue after heat-induced antigen retrieval. Antibody LS-B1901 dilution 1:50.

**Western Blot Image:**



NTERA-2 whole cell extract was resolved by electrophoresis, transferred to nitrocellulose and probed with rabbit polyclonal antibody raised against the N-terminal region of SOX2. Proteins were visualized using HRP Donkey anti-rabbit IgG and a chemiluminescence detection system.

**Requested From:**

Japan

Laboratory Reagent For In Vitro Research Use Only

Not for resale without prior written consent from LifeSpan BioSciences, Inc.

Created on 9/23/2014

© 2014 LifeSpan BioSciences