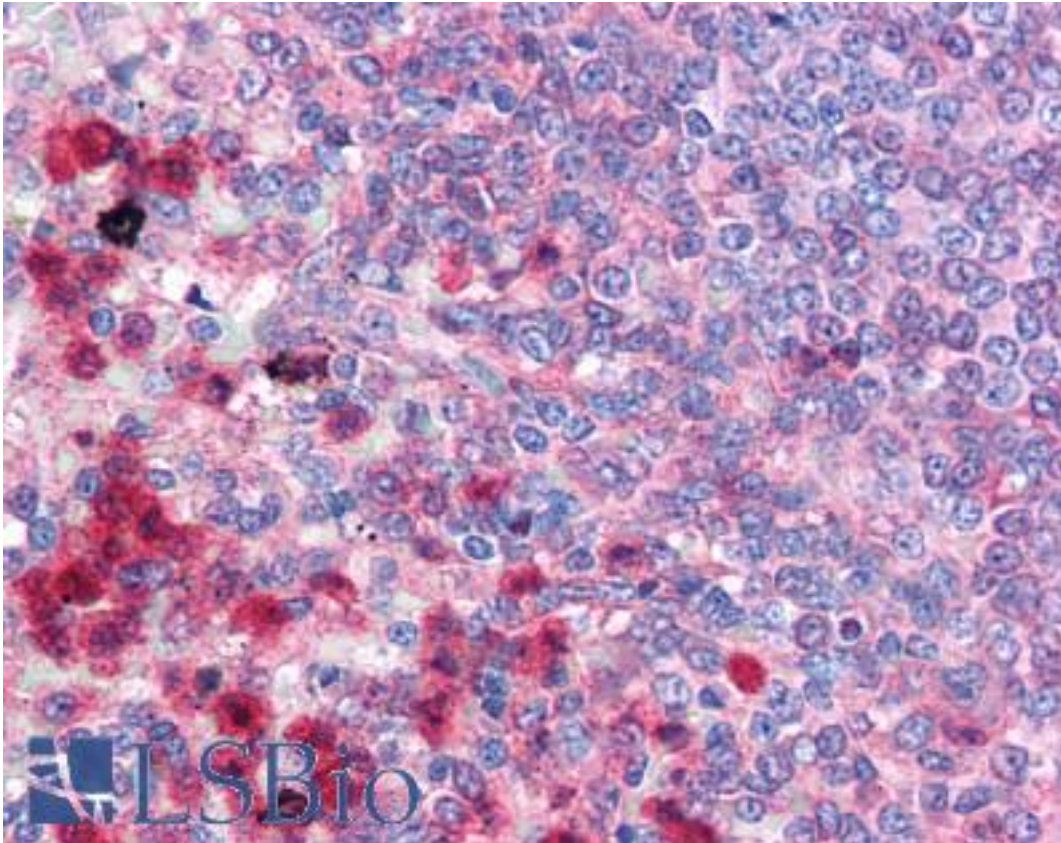


TRAF6 Rabbit anti-Human Polyclonal (C-Terminus) Antibody - LS-B190 - LSBio	
CatalogID:	LS-B190
Validation:	This antibody replaces catalog number LS-C10907. It has been validated for use in the following assays: IHC.
Target:	TNF receptor-associated factor 6, E3 ubiquitin protein ligase (TRAF6)
Synonyms:	TRAF6 Antibody, RING finger protein 85 Antibody, MGC:3310 Antibody, RNF85 Antibody
Host	TRAF6 antibody was produced in Rabbit
Clonality:	Polyclonal
Isotype:	IgG
Immunogen Species:	TRAF6 antibody was raised against Human
Antigen Type:	Synthetic peptide
Immunogen:	TRAF6 antibody was raised against synthetic peptide derived from the C-terminal region of the human and mouse TRAF6 (TNF receptor-associated factor 6) protein.
Specificity:	Recognizes human TRAF6 proteins. On Western blots, it identifies a band at ~55kD and a band at ~60kD. The two bands may represent the two reported forms of this protein (522 and 530 amino acids).
Epitope:	C-Terminus
Reactivity:	Human, Mouse
Purification:	Immunoaffinity purified
Presentation:	PBS, pH 7.4, 0.1% sodium azide, 40% glycerol.
Recommended Storage:	Short term 4°C, long term aliquot and store at -20°C, avoid freeze thaw cycles.
Usage Summary:	Immunohistochemistry: LS-B190 was validated for use in immunohistochemistry on a panel of 21 formalin-fixed, paraffin-embedded (FFPE) human tissues after heat induced antigen retrieval in pH 6.0 citrate buffer. After incubation with the primary antibody, slides were incubated with biotinylated secondary antibody, followed by alkaline phosphatase-streptavidin and chromogen. The stained slides were evaluated by a pathologist to confirm staining specificity. The optimal working concentration for LS-B190 was determined to be 2.5 ug/ml. Immunoprecipitation: 7 ug/reaction. Positive control: Human Hela, HEK293, Jurkat, and mouse NIH3T3 cell lysates. Please note that cross-reactivity of this antibody with mouse has been confirmed only in WB. The antibody has not been evaluated for use in IHC with mouse samples at this time and suitability cannot be guaranteed.
Uses:	IHC - Paraffin (1:200 - 1:400), Western blot (1 - 3 µg/ml), Immunoprecipitation (Optimal dilution to be determined by the researcher)
Size:	50 µg
Concentration:	0.13 mg/ml

Immunohistochemistry Image:



Anti-TRAF6 antibody IHC of human spleen. Immunohistochemistry of formalin-fixed, paraffin-embedded tissue after heat-induced antigen retrieval. Antibody LS-B190 concentration 5 ug/ml.

Requested From:

Japan

Laboratory Reagent For In Vitro Research Use Only

Not for resale without prior written consent from LifeSpan BioSciences, Inc.

Created on 9/23/2014

© 2014 LifeSpan BioSciences