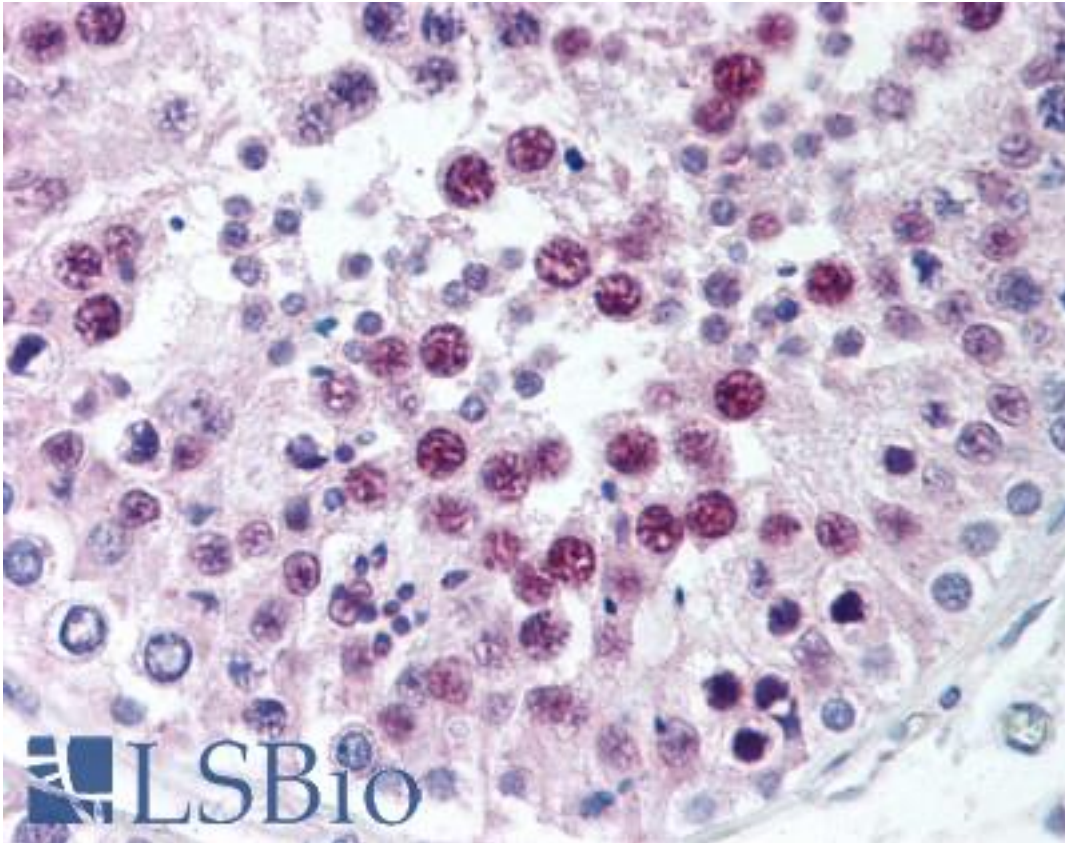


SIRT1 / Sirtuin 1 Rabbit anti-Human Polyclonal (C-Terminus) Antibody - LS-B1895 - LSBio	
CatalogID:	LS-B1895
Validation:	This antibody replaces catalog number LS-C41183. It has been validated for use in the following assays: IHC.
Target:	sirtuin 1 (SIRT1)
Synonyms:	SIRT1 Antibody, SIR2-like protein 1 Antibody, SIR2alpha Antibody, SIR2L1 Antibody, Sirtuin 1 Antibody, Sir2-like 1 Antibody, Sirtuin type 1 Antibody, HSIR2 Antibody, HSIRT1 Antibody
Family / Subfamily:	ADP-Ribosyltransferase / not assigned-ADP-Ribosyltransferase
Host	SIRT1 antibody was produced in Rabbit
Clonality:	Polyclonal
Isotype:	IgG
Immunogen Species:	SIRT1 / Sirtuin 1 antibody was raised against Human
Antigen Type:	Synthetic peptide
Immunogen:	SIRT1 / Sirtuin 1 antibody was raised against synthetic peptide from human SIRT1.
Specificity:	Peptide mapping to the carboxy terminal domain of human SIRT1
Epitope:	C-Terminus
Reactivity:	Human
Purification:	Affinity purified
Presentation:	Phosphate-buffered solution, pH 7.2, 0.09% sodium azide, 50% glycerol.
Recommended Storage:	Store at 4°C. Do not freeze.
Usage Summary:	Immunohistochemistry: LS-B1895 was validated for use in immunohistochemistry on a panel of 21 formalin-fixed, paraffin-embedded (FFPE) human tissues after heat induced antigen retrieval in pH 6.0 citrate buffer. After incubation with the primary antibody, slides were incubated with biotinylated secondary antibody, followed by alkaline phosphatase-streptavidin and chromogen. The stained slides were evaluated by a pathologist to confirm staining specificity. The optimal working concentration for LS-B1895 was determined to be 1:50.
Uses:	IHC - Paraffin (1:50), Western blot, Immunoprecipitation (Optimal dilution to be determined by the researcher)
Size:	50 µl

Immunohistochemistry Image:



Anti-SIRT1 antibody IHC of human testis. Immunohistochemistry of formalin-fixed, paraffin-embedded tissue after heat-induced antigen retrieval. Antibody LS-B1895 dilution 1:50.

Requested From:

Japan

Laboratory Reagent For In Vitro Research Use Only

Not for resale without prior written consent from LifeSpan BioSciences, Inc.

Created on 9/23/2014

© 2014 LifeSpan BioSciences