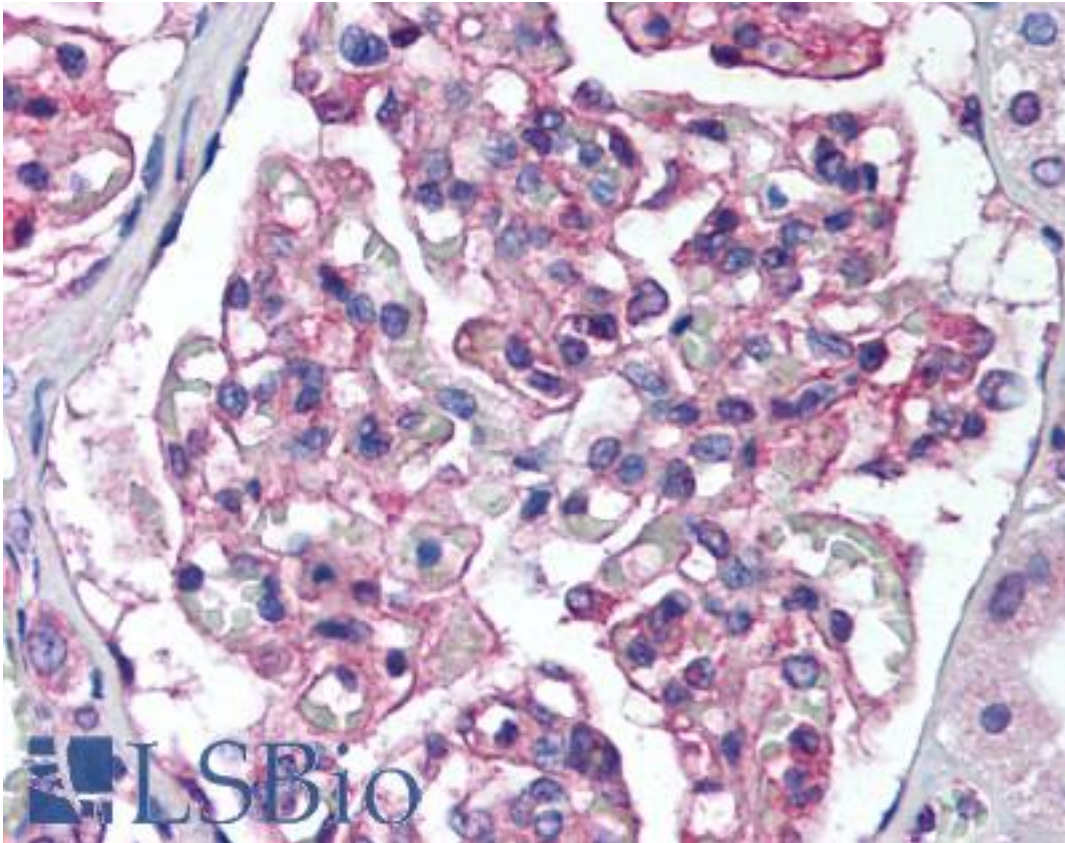


**PTK2B / PYK2 Rabbit anti-Mouse Polyclonal (N-Terminus) Antibody - LS-B1892 - LSBio**

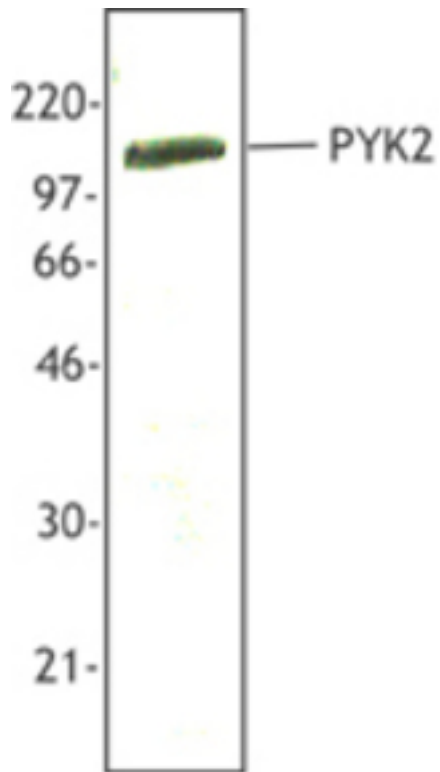
<b>CatalogID:</b>	LS-B1892
<b>Validation:</b>	This antibody replaces catalog number LS-C41225. It has been validated for use in the following assays: IHC.
<b>Target:</b>	protein tyrosine kinase 2 beta (PTK2B)
<b>Synonyms:</b>	PTK2B Antibody, CADTK Antibody, CAKB Antibody, Cell adhesion kinase beta Antibody, FADK 2 Antibody, FADK2 Antibody, Focal adhesion kinase 2 Antibody, FRNK Antibody, FAK2 Antibody, Proline-rich tyrosine kinase 2 Antibody, Protein-tyrosine kinase 2-beta Antibody, Protein kinase B Antibody, Protein tyrosine kinase 2 beta Antibody, PYK2 Antibody, RAFTK Antibody, CAK-beta Antibody, PKB Antibody, PTK Antibody
<b>Family / Subfamily:</b>	Protein Kinase / Focal Adhesion Kinase
<b>Host</b>	PTK2B antibody was produced in Rabbit
<b>Clonality:</b>	Polyclonal
<b>Isotype:</b>	IgG
<b>Immunogen Species:</b>	PTK2B / PYK2 antibody was raised against Mouse
<b>Immunogen:</b>	PTK2B / PYK2 antibody was raised against recombinant mouse PTK2B / PYK2.
<b>Specificity:</b>	Recombinant (partial), N-terminal
<b>Epitope:</b>	N-Terminus
<b>Reactivity:</b>	Mouse, Human
<b>Purification:</b>	Immunoaffinity purified
<b>Presentation:</b>	Phosphate-buffered solution, pH 7.2, 0.09% sodium azide, 50% glycerol.
<b>Recommended Storage:</b>	Store at -20°C. Aliquot to avoid freeze/thaw cycles.
<b>Usage Summary:</b>	Immunohistochemistry: LS-B1892 was validated for use in immunohistochemistry on a panel of 21 formalin-fixed, paraffin-embedded (FFPE) human tissues after heat induced antigen retrieval in pH 6.0 citrate buffer. After incubation with the primary antibody, slides were incubated with biotinylated secondary antibody, followed by alkaline phosphatase-streptavidin and chromogen. The stained slides were evaluated by a pathologist to confirm staining specificity. The optimal working concentration for LS-B1892 was determined to be 1:50.
<b>Uses:</b>	IHC - Paraffin (1:50), Western blot (Optimal dilution to be determined by the researcher)
<b>Size:</b>	50 µl

**Immunohistochemistry Image:**



Anti-PTK2B / PYK2 antibody IHC of human kidney. Immunohistochemistry of formalin-fixed, paraffin-embedded tissue after heat-induced antigen retrieval. Antibody LS-B1892 dilution 1:50.

**Western Blot Image:**



Hela cell lysate was resolved by electrophoresis, transferred to nitrocellulose and probed with rabbit anti-PYK2 antibody. Proteins were visualized using a donkey anti-rabbit secondary conjugated to HRP and a chemiluminescence detection system.

**Requested From:**

Japan

Laboratory Reagent For In Vitro Research Use Only

Not for resale without prior written consent from LifeSpan BioSciences, Inc.

Created on 9/23/2014

© 2014 LifeSpan BioSciences