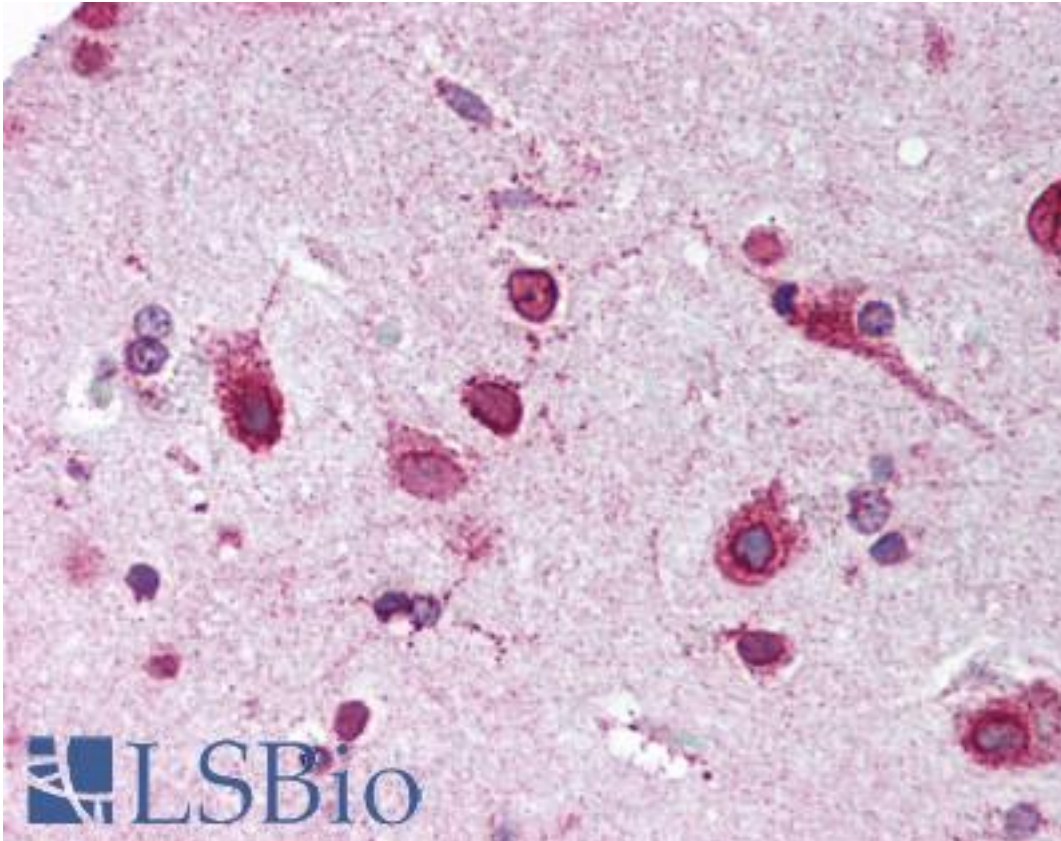


Prohibitin 2 / PHB2 Rabbit anti-Mouse Polyclonal (C-Terminus) Antibody - LS-B1889 - LSBio

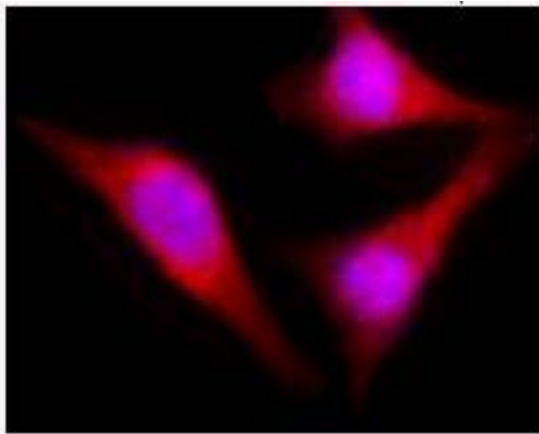
CatalogID:	LS-B1889
Validation:	This antibody replaces catalog number LS-C41304. It has been validated for use in the following assays: IHC.
Target:	prohibitin 2 (PHB2)
Synonyms:	PHB2 Antibody, BCAP37 Antibody, BAP Antibody, D-prohibitin Antibody, p22 Antibody, Prohibitin-2 Antibody, B-cell associated protein Antibody, Bap37 Antibody, PNAS-141 Antibody, Prohibitin 2 Antibody, REA Antibody
Family / Subfamily:	Transcription factor
Host	PHB2 antibody was produced in Rabbit
Clonality:	Polyclonal
Isotype:	IgG
Immunogen Species:	Prohibitin 2 / PHB2 antibody was raised against Mouse
Immunogen:	Prohibitin 2 / PHB2 antibody was raised against recombinant mouse PHB2.
Specificity:	Recombinant (partial), C-terminal.
Epitope:	C-Terminus
Reactivity:	Mouse, Human
Purification:	Immunoaffinity purified
Presentation:	Phosphate-buffered solution, pH 7.2, 0.09% sodium azide, 50% glycerol.
Recommended Storage:	Store at -20°C. Aliquot to avoid freeze/thaw cycles.
Usage Summary:	Immunohistochemistry: LS-B1889 was validated for use in immunohistochemistry on a panel of 21 formalin-fixed, paraffin-embedded (FFPE) human tissues after heat induced antigen retrieval in pH 6.0 citrate buffer. After incubation with the primary antibody, slides were incubated with biotinylated secondary antibody, followed by alkaline phosphatase-streptavidin and chromogen. The stained slides were evaluated by a pathologist to confirm staining specificity. The optimal working concentration for LS-B1889 was determined to be 1:50.
Uses:	IHC - Paraffin (1:50), ICC, Western blot (Optimal dilution to be determined by the researcher)
Size:	50 µl

Immunohistochemistry Image:



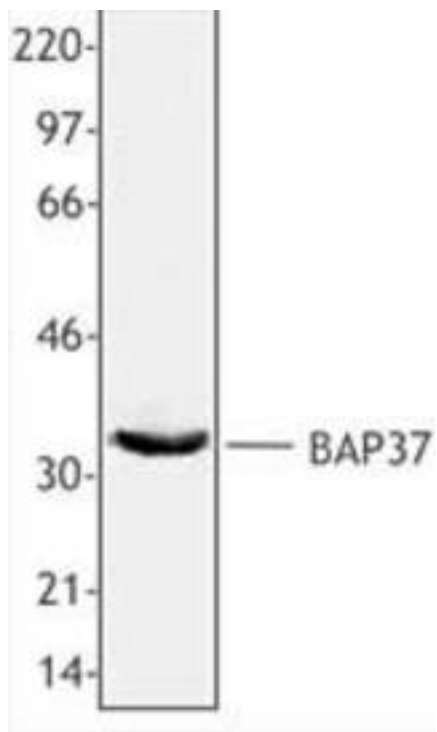
Anti-PHB2 antibody IHC of human brain, cortex. Immunohistochemistry of formalin-fixed, paraffin-embedded tissue after heat-induced antigen retrieval. Antibody LS-B1889 dilution 1:50.

Immunocytochemistry Image:



Immunofluorescent microscope analysis of HeLa cells using anti-BAP37 polyclonal antibody (red). Nuclei were stain with DAPI (blue).

Western Blot Image:



MCF-7 whole cell extract was resolved by electrophoresis, transferred to nitrocellulose and probed with rabbit anti-BAP37 antibody. Proteins were visualized using a donkey anti-rabbit secondary conjugated to HRP and a chemiluminescence detection system.

Requested From:

Japan

Laboratory Reagent For In Vitro Research Use Only

Not for resale without prior written consent from LifeSpan BioSciences, Inc.

Created on 9/23/2014

© 2014 LifeSpan BioSciences