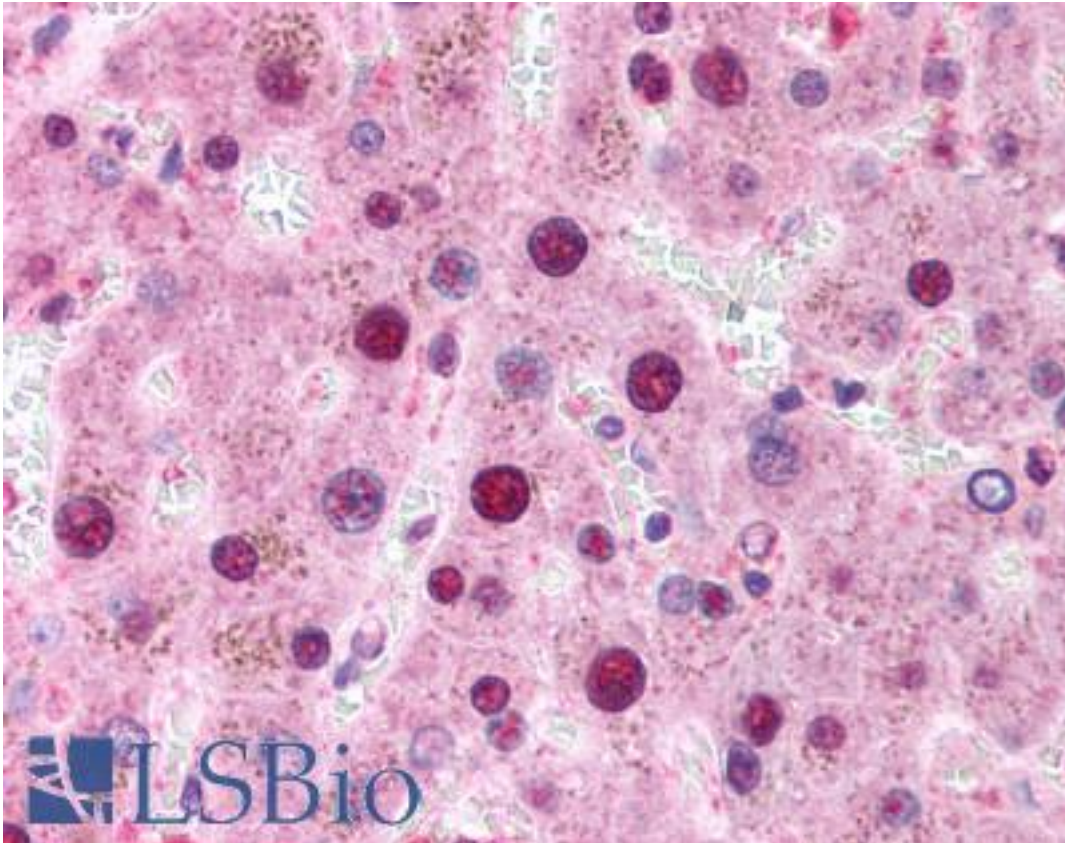


**XBP1 Rabbit anti-Human Polyclonal (N-Terminus) Antibody - LS-B188 - LSBio**

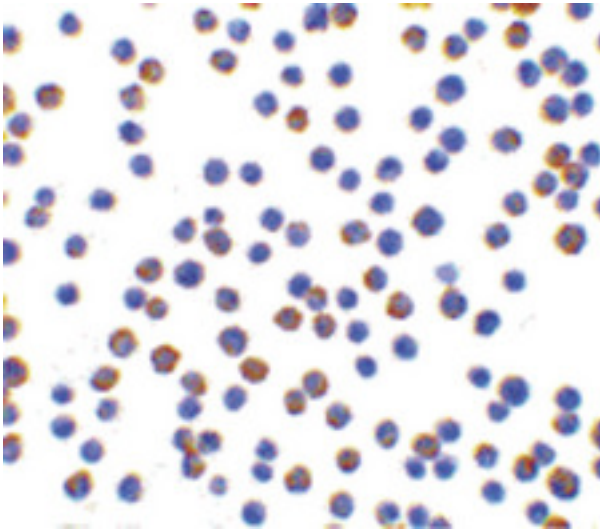
<b>CatalogID:</b>	LS-B188
<b>Validation:</b>	This antibody replaces catalog number LS-C19568. It has been validated for use in the following assays: IHC.
<b>Target:</b>	X-box binding protein 1 (XBP1)
<b>Synonyms:</b>	XBP1 Antibody, X-box binding protein 1 Antibody, X-box-binding protein 1 Antibody, XBP2 Antibody, TREB5 Antibody, XBP-1 Antibody
<b>Host</b>	XBP1 antibody was produced in Rabbit
<b>Clonality:</b>	Polyclonal
<b>Immunogen Species:</b>	XBP1 antibody was raised against Human
<b>Antigen Type:</b>	Synthetic peptide
<b>Immunogen:</b>	XBP1 antibody was raised against synthetic peptide from human XBP1.
<b>Specificity:</b>	18 amino acid peptide from near the amino terminus of human XBP-1
<b>Epitope:</b>	N-Terminus
<b>Reactivity:</b>	Human, Mouse
<b>Purification:</b>	Immunoaffinity purified
<b>Presentation:</b>	PBS, 0.02% sodium azide.
<b>Recommended Storage:</b>	Short term 4°C, long term aliquot and store at -20°C, avoid freeze thaw cycles. Store undiluted.
<b>Usage Summary:</b>	Immunohistochemistry: LS-B188 was validated for use in immunohistochemistry on a panel of 21 formalin-fixed, paraffin-embedded (FFPE) human tissues after heat induced antigen retrieval in pH 6.0 citrate buffer. After incubation with the primary antibody, slides were incubated with biotinylated secondary antibody, followed by alkaline phosphatase-streptavidin and chromogen. The stained slides were evaluated by a pathologist to confirm staining specificity. The optimal working concentration for LS-B188 was determined to be 20 ug/ml.
<b>Uses:</b>	IHC - Paraffin (20 µg/ml), Western blot (Optimal dilution to be determined by the researcher)
<b>Size:</b>	50 µg
<b>Concentration:</b>	1 mg/ml

**Immunohistochemistry Image:**



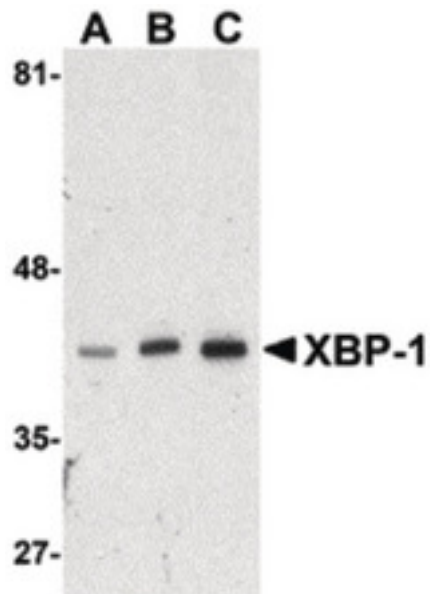
Anti-XBP1 antibody IHC of human liver. Immunohistochemistry of formalin-fixed, paraffin-embedded tissue after heat-induced antigen retrieval. Antibody LS-B188 concentration 20 ug/ml.

**Immunocytochemistry Image:**



Immunocytochemistry of XBP-1 in HepG2 cells with XBP-1 antibody at 10 ug/ml.

**Western Blot Image:**



Western blot of XBP-1 in HepG2 cell lysate with XBP-1 antibody at (A) 0.5, (B) 1 and (C) 2 ug/ml.

**Requested From:**

Japan

Laboratory Reagent For In Vitro Research Use Only

Not for resale without prior written consent from LifeSpan BioSciences, Inc.

Created on 9/23/2014

© 2014 LifeSpan BioSciences