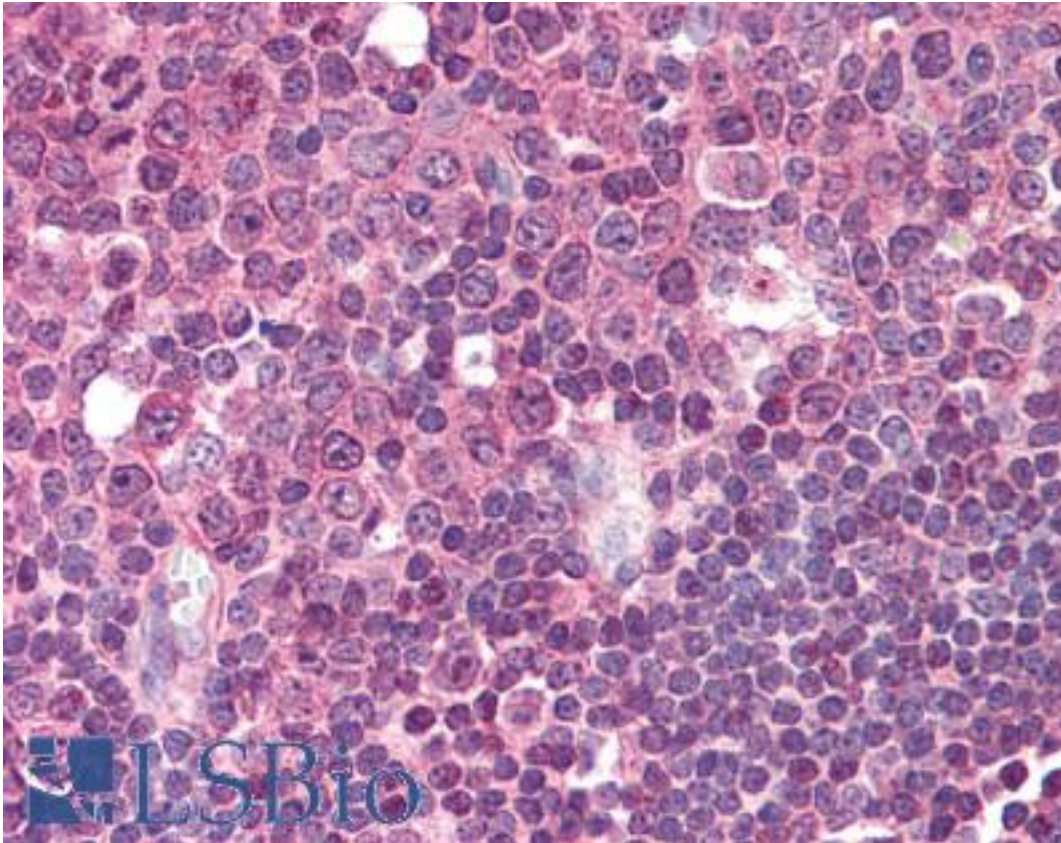


LAT2 / NTAL Mouse anti-Human Monoclonal (aa196-212) (NAP-03) Antibody - LS-B1875 - LSBio	
CatalogID:	LS-B1875
Validation:	This antibody replaces catalog number LS-C46030. It has been validated for use in the following assays: IHC.
Target:	linker for activation of T cells family, member 2 (LAT2)
Synonyms:	LAT2 Antibody, HSPC046 Antibody, Non-T-cell activation linker Antibody, NTAL Antibody, LAB Antibody, WBSCR15 Antibody, WBS15 Antibody, WBSCR5 Antibody, WSCR5 Antibody
Host	LAT2 antibody was produced in Mouse
Clonality:	Monoclonal
Isotype:	IgG2a
Clone Name:	NAP-03
Immunogen Species:	LAT2 / NTAL antibody was raised against Human
Antigen Type:	Synthetic peptide
Immunogen:	LAT2 / NTAL antibody was raised against synthetic peptide from human LAT2.
Specificity:	Peptide corresponding to aa 196-212 of human NTAL coupled to KLH
Epitope:	aa196-212
Reactivity:	Human
Purification:	Protein A purified
Presentation:	PBS, 15 mM sodium azide, approx., pH 7.4.
Recommended Storage:	Short term 4°C, long term aliquot and store at -20°C, avoid freeze thaw cycles.
Usage Summary:	Immunohistochemistry: LS-B1875 was validated for use in immunohistochemistry on a panel of 21 formalin-fixed, paraffin-embedded (FFPE) human tissues after heat induced antigen retrieval in pH 6.0 citrate buffer. After incubation with the primary antibody, slides were incubated with biotinylated secondary antibody, followed by alkaline phosphatase-streptavidin and chromogen. The stained slides were evaluated by a pathologist to confirm staining specificity. The optimal working concentration for LS-B1875 was determined to be 5 ug/ml.
Uses:	IHC - Paraffin (5 µg/ml), Western blot (1 - 2 µg/ml), Immunoprecipitation (1 - 2 µg/ml) (Optimal dilution to be determined by the researcher)
Size:	50 µg
Concentration:	1 mg/ml

Immunohistochemistry Image:



Anti-LAT2 antibody IHC of human tonsil. Immunohistochemistry of formalin-fixed, paraffin-embedded tissue after heat-induced antigen retrieval. Antibody LS-B1875 concentration 5 ug/ml.

Requested From:

Japan

Laboratory Reagent For In Vitro Research Use Only

Not for resale without prior written consent from LifeSpan BioSciences, Inc.

Created on 9/23/2014

© 2014 LifeSpan BioSciences