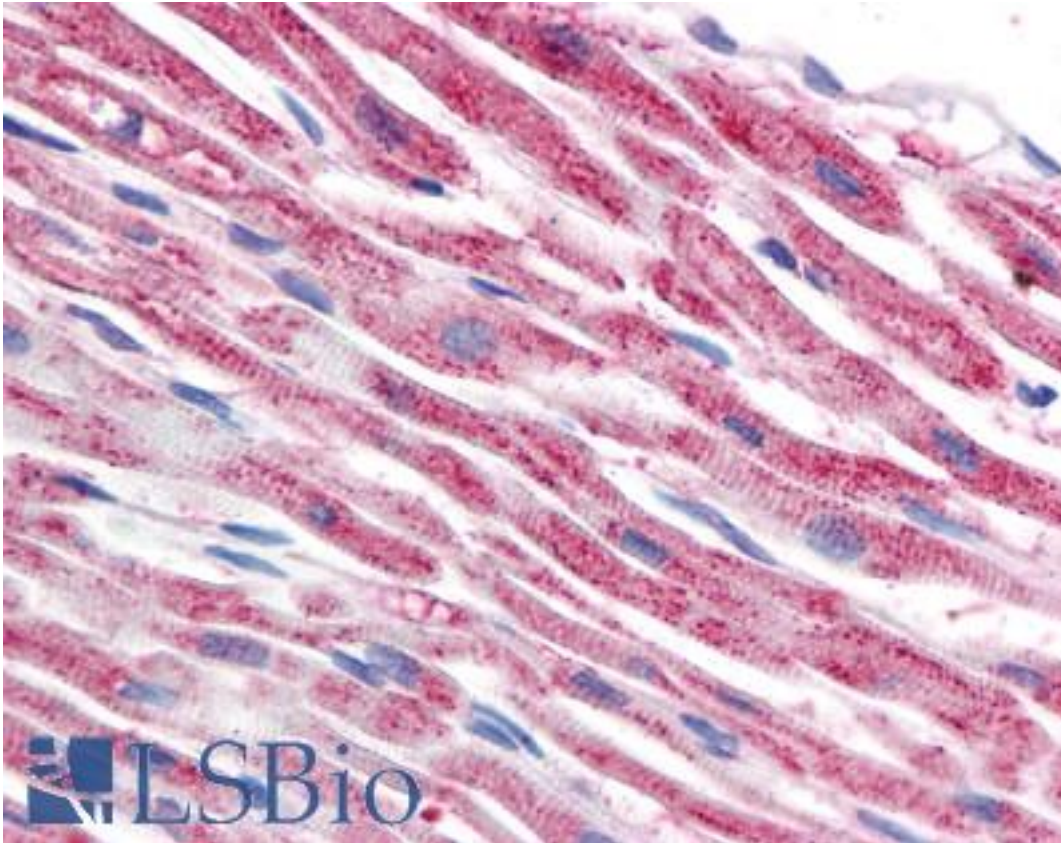


TUBB / Beta Tubulin Mouse anti-Pig Monoclonal (TU-06) Antibody - LS-B1867 - LSBio	
<b>CatalogID:</b>	LS-B1867
<b>Validation:</b>	This antibody replaces catalog number LS-C45867. It has been validated for use in the following assays: IHC.
<b>Target:</b>	tubulin, beta class I (TUBB)
<b>Synonyms:</b>	TUBB Antibody, Beta Tubulin Antibody, Beta 5-tubulin Antibody, Beta-4 tubulin Antibody, Beta1-tubulin Antibody, M40 Antibody, Tubulin beta-5 chain Antibody, Beta 1b tubulin Antibody, Class I beta-tubulin Antibody, OK/SW-cl.56 Antibody, TUBB5 Antibody, Tubulin beta chain Antibody, Tubulin beta polypeptide Antibody, Tubulin beta-1 chain Antibody, Tubulin, beta class I Antibody, Tubulin, beta polypeptide Antibody
<b>Host</b>	TUBB antibody was produced in Mouse
<b>Clonality:</b>	Monoclonal
<b>Isotype:</b>	IgM
<b>Clone Name:</b>	TU-06
<b>Immunogen Species:</b>	TUBB / Beta Tubulin antibody was raised against Pig
<b>Immunogen:</b>	TUBB / Beta Tubulin antibody was raised against purified porcine TUBB / Tubulin, Beta.
<b>Specificity:</b>	Beta-subunits of porcine brain tubulin
<b>Reactivity:</b>	Pig, Human, All species
<b>Purification:</b>	Precipitation
<b>Presentation:</b>	Tris buffered saline (TBS), 15 mM sodium azide, approx., pH 8.0. Sourced in Ascites.
<b>Recommended Storage:</b>	+4°C, avoid freezing
<b>Usage Summary:</b>	Immunohistochemistry: LS-B1867 was validated for use in immunohistochemistry on a panel of 21 formalin-fixed, paraffin-embedded (FFPE) human tissues after heat induced antigen retrieval in pH 6.0 citrate buffer. After incubation with the primary antibody, slides were incubated with biotinylated secondary antibody, followed by alkaline phosphatase-streptavidin and chromogen. The stained slides were evaluated by a pathologist to confirm staining specificity. The optimal working concentration for LS-B1867 was determined to be 5 ug/ml.
<b>Uses:</b>	IHC - Paraffin (5 µg/ml), ICC (2 µg/ml), Western blot (1 µg/ml) (Optimal dilution to be determined by the researcher)
<b>Size:</b>	50 µg
<b>Concentration:</b>	1 mg/ml

**Immunohistochemistry Image:**



Anti-TUBB / Tubulin, Beta antibody IHC of human heart. Immunohistochemistry of formalin-fixed, paraffin-embedded tissue after heat-induced antigen retrieval. Antibody LS-B1867 concentration 5 ug/ml.

**Requested From:**

Japan

Laboratory Reagent For In Vitro Research Use Only

Not for resale without prior written consent from LifeSpan BioSciences, Inc.

Created on 9/23/2014

© 2014 LifeSpan BioSciences