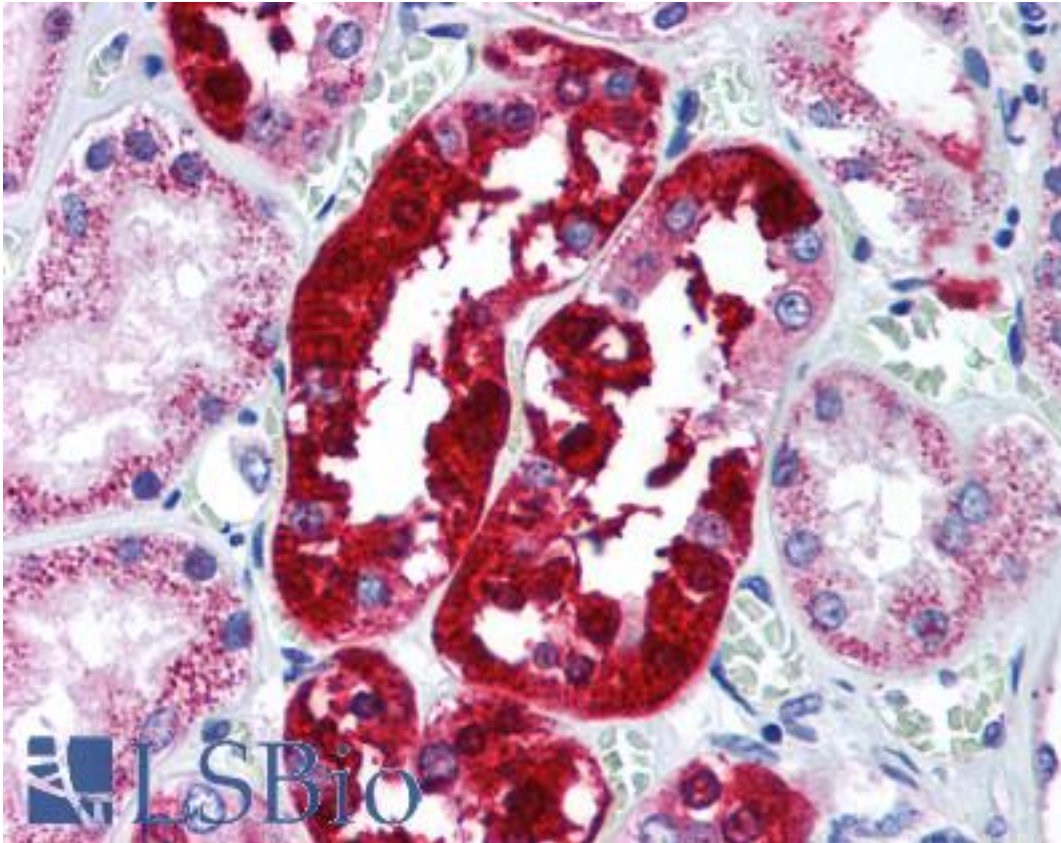


APG5 / ATG5 Rabbit anti-Human Polyclonal Antibody - LS-B1843 - LSBio

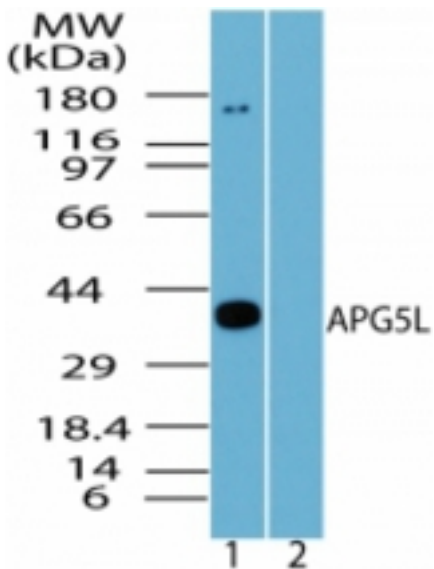
CatalogID:	LS-B1843
Validation:	This antibody replaces catalog number LS-C47393. It has been validated for use in the following assays: IHC.
Target:	autophagy related 5 (ATG5)
Synonyms:	ATG5 Antibody, APG5 Antibody, APG5-LIKE Antibody, APG5L Antibody, Apoptosis specific protein Antibody, Apoptosis-specific protein Antibody, Autophagy related 5 Antibody, HAPG5 Antibody, ASP Antibody, Autophagy protein 5 Antibody
Host	ATG5 antibody was produced in Rabbit
Clonality:	Polyclonal
Immunogen Species:	APG5 / ATG5 antibody was raised against Human
Antigen Type:	Synthetic peptide
Immunogen:	APG5 / ATG5 antibody was raised against synthetic peptide from human ATG5.
Specificity:	A portion of amino acid 1-50 of human APG5L
Reactivity:	Human, Mouse, Rat, Bovine, Pig, Pufferfish, Zebrafish
Purification:	Immunoaffinity purified
Presentation:	PBS, 0.2% gelatin, 0.05% sodium azide.
Recommended Storage:	Short term 4°C, long term aliquot and store at -20°C, avoid freeze thaw cycles.
Usage Summary:	Immunohistochemistry: LS-B1843 was validated for use in immunohistochemistry on a panel of 21 formalin-fixed, paraffin-embedded (FFPE) human tissues after heat induced antigen retrieval in pH 6.0 citrate buffer. After incubation with the primary antibody, slides were incubated with biotinylated secondary antibody, followed by alkaline phosphatase-streptavidin and chromogen. The stained slides were evaluated by a pathologist to confirm staining specificity. The optimal working concentration for LS-B1843 was determined to be 5 ug/ml.
Uses:	IHC - Paraffin (5 µg/ml), Western blot (0.5 - 2 µg/ml) (Optimal dilution to be determined by the researcher)
Size:	50 µg
Concentration:	0.5 mg/ml

Immunohistochemistry Image:



Anti-ATG5 antibody IHC of human kidney. Immunohistochemistry of formalin-fixed, paraffin-embedded tissue after heat-induced antigen retrieval. Antibody LS-B1843 concentration 5 ug/ml.

Western Blot Image:



Western blot of human APG5L in T98G cell lysate in the 1) absence, 2) presence of immunizing peptide using antibody at 1 ug/ml.

Requested From:

Japan

Laboratory Reagent For In Vitro Research Use Only

Not for resale without prior written consent from LifeSpan BioSciences, Inc.

Created on 9/23/2014

© 2014 LifeSpan BioSciences