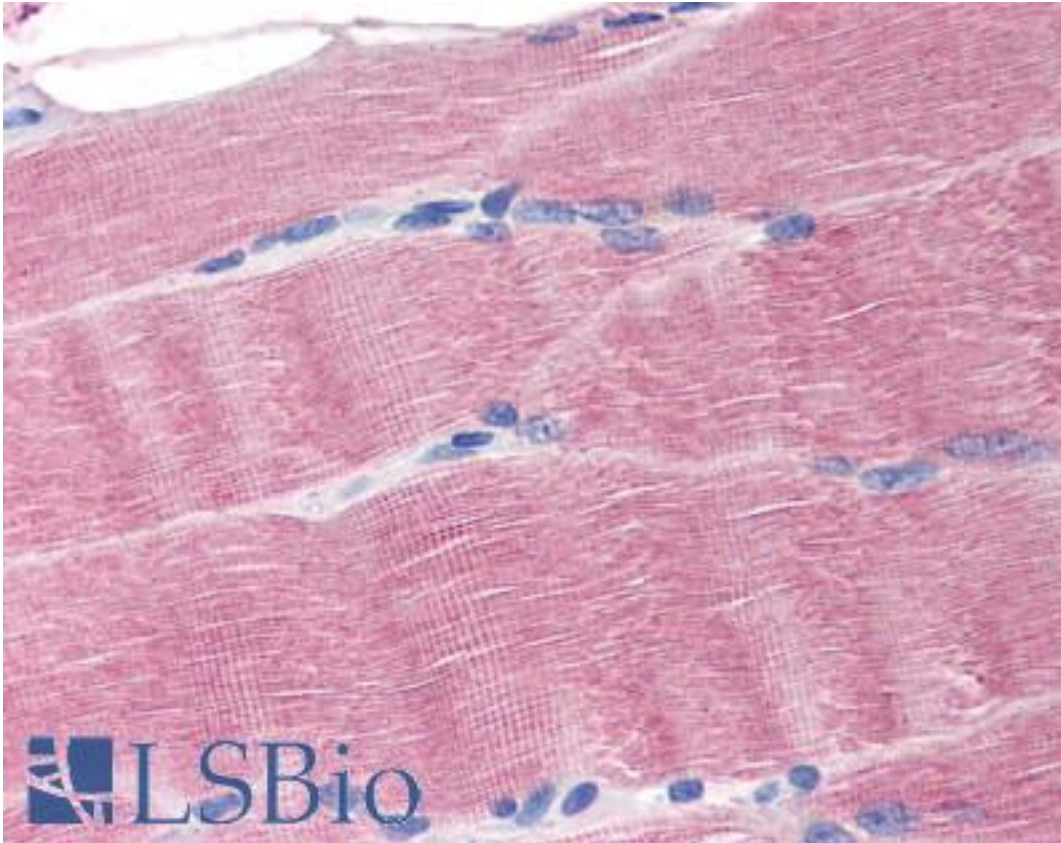


SLC40A1 / Ferroportin-1 Rabbit anti-Human Polyclonal (N-Terminus) Antibody - LS-B1836 - LSBio	
<b>CatalogID:</b>	LS-B1836
<b>Validation:</b>	This antibody replaces catalog number LS-C47033. It has been validated for use in the following assays: IHC.
<b>Target:</b>	solute carrier family 40 (iron-regulated transporter), member 1 (SLC40A1)
<b>Synonyms:</b>	SLC40A1 Antibody, Ferroportin Antibody, FPN1 Antibody, Iron-regulated transporter 1 Antibody, MST079 Antibody, MSTP079 Antibody, IREG1 Antibody, Iron regulated gene 1 Antibody, SLC11A3 Antibody, MTP1 Antibody, Ferroportin-1 Antibody, HFE4 Antibody
<b>Family / Subfamily:</b>	Transporter / Natural resistance-associated macrophage protein (NRAMP)
<b>Host</b>	SLC40A1 antibody was produced in Rabbit
<b>Clonality:</b>	Polyclonal
<b>Immunogen Species:</b>	SLC40A1 / Ferroportin-1 antibody was raised against Human
<b>Antigen Type:</b>	Synthetic peptide
<b>Immunogen:</b>	SLC40A1 / Ferroportin-1 antibody was raised against synthetic peptide from human SLC40A1.
<b>Specificity:</b>	synthetic peptide corresponding to N-terminal residues of human MTP1 (Metal transporter protein 1)
<b>Epitope:</b>	N-Terminus
<b>Reactivity:</b>	Human, Mouse
<b>Purification:</b>	Immunoaffinity purified
<b>Presentation:</b>	PBS, 0.01% sodium azide, 50% glycerol.
<b>Recommended Storage:</b>	Long term: -20°C; Short term: +4°C. Avoid repeat freeze-thaw cycles.
<b>Usage Summary:</b>	Immunohistochemistry: LS-B1836 was validated for use in immunohistochemistry on a panel of 21 formalin-fixed, paraffin-embedded (FFPE) human tissues after heat induced antigen retrieval in pH 6.0 citrate buffer. After incubation with the primary antibody, slides were incubated with biotinylated secondary antibody, followed by alkaline phosphatase-streptavidin and chromogen. The stained slides were evaluated by a pathologist to confirm staining specificity. The optimal working concentration for LS-B1836 was determined to be 20 ug/ml.
<b>Uses:</b>	IHC - Paraffin (20 µg/ml), Western blot (1 µg/ml), ELISA (1 µg/ml) (Optimal dilution to be determined by the researcher)
<b>Size:</b>	50 µg
<b>Concentration:</b>	0.5 mg/ml

**Immunohistochemistry Image:**



Anti-SLC40A1 antibody IHC of human skeletal muscle. Immunohistochemistry of formalin-fixed, paraffin-embedded tissue after heat-induced antigen retrieval. Antibody LS-B1836 concentration 20 ug/ml.

**Requested From:**

Japan

Laboratory Reagent For In Vitro Research Use Only

Not for resale without prior written consent from LifeSpan BioSciences, Inc.

Created on 9/23/2014

© 2014 LifeSpan BioSciences