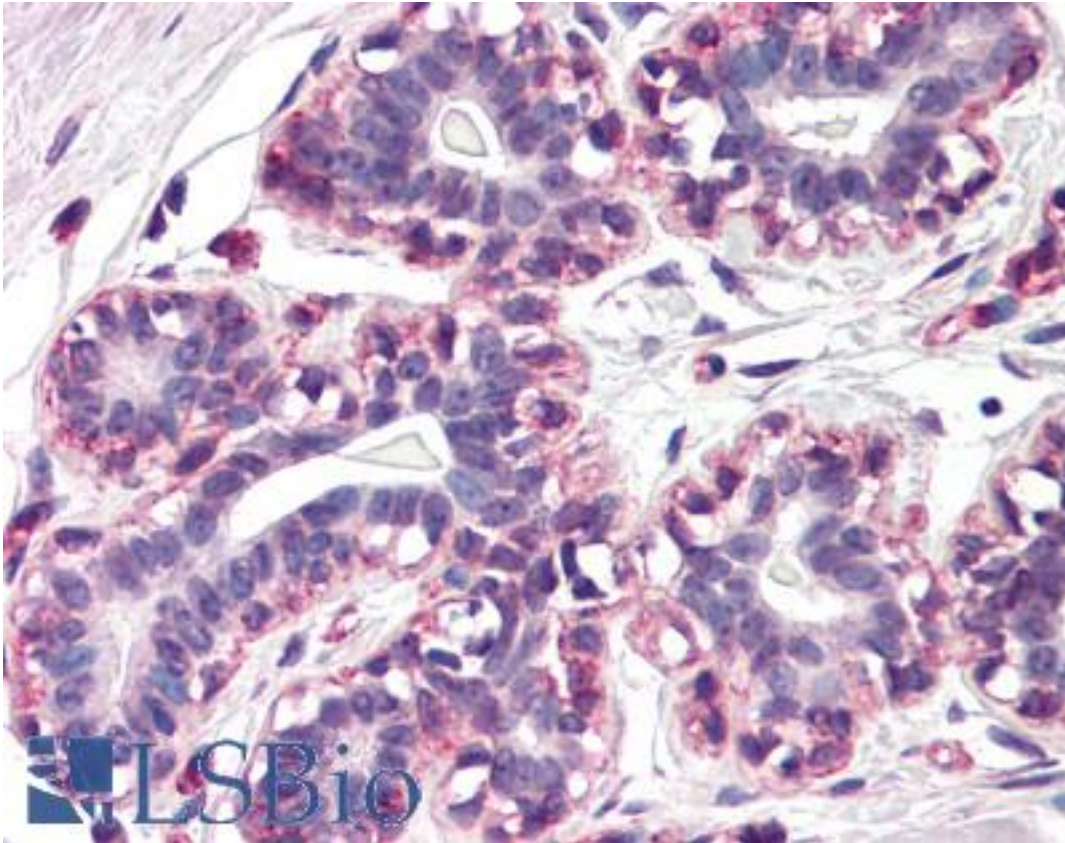


RAMP3 Rabbit anti-Human Polyclonal (N-Terminus) Antibody - LS-B1833 - LSBio

CatalogID:	LS-B1833
Validation:	This antibody replaces catalog number LS-C46859. It has been validated for use in the following assays: IHC.
Target:	receptor (G protein-coupled) activity modifying protein 3 (RAMP3)
Synonyms:	RAMP3 Antibody
Host	RAMP3 antibody was produced in Rabbit
Clonality:	Polyclonal
Immunogen Species:	RAMP3 antibody was raised against Human
Antigen Type:	Synthetic peptide
Immunogen:	RAMP3 antibody was raised against synthetic peptide from human RAMP3.
Specificity:	synthetic peptide corresponding to N-terminal residues of RAMP3
Epitope:	N-Terminus
Reactivity:	Human
Purification:	Immunoaffinity purified
Presentation:	PBS, 0.01% sodium azide, 50% glycerol.
Recommended Storage:	Long term: -20°C; Short term: +4°C. Avoid repeat freeze-thaw cycles.
Usage Summary:	Immunohistochemistry: LS-B1833 was validated for use in immunohistochemistry on a panel of 21 formalin-fixed, paraffin-embedded (FFPE) human tissues after heat induced antigen retrieval in pH 6.0 citrate buffer. After incubation with the primary antibody, slides were incubated with biotinylated secondary antibody, followed by alkaline phosphatase-streptavidin and chromogen. The stained slides were evaluated by a pathologist to confirm staining specificity. The optimal working concentration for LS-B1833 was determined to be 20 ug/ml.
Uses:	IHC - Paraffin (20 µg/ml), Western blot (1 µg/ml), ELISA (1 µg/ml) (Optimal dilution to be determined by the researcher)
Size:	50 µg
Concentration:	0.5 mg/ml

Immunohistochemistry Image:



Anti-RAMP3 antibody IHC of human breast. Immunohistochemistry of formalin-fixed, paraffin-embedded tissue after heat-induced antigen retrieval. Antibody LS-B1833 concentration 20 ug/ml.

Requested From:

Japan

Laboratory Reagent For In Vitro Research Use Only

Not for resale without prior written consent from LifeSpan BioSciences, Inc.

Created on 9/23/2014

© 2014 LifeSpan BioSciences