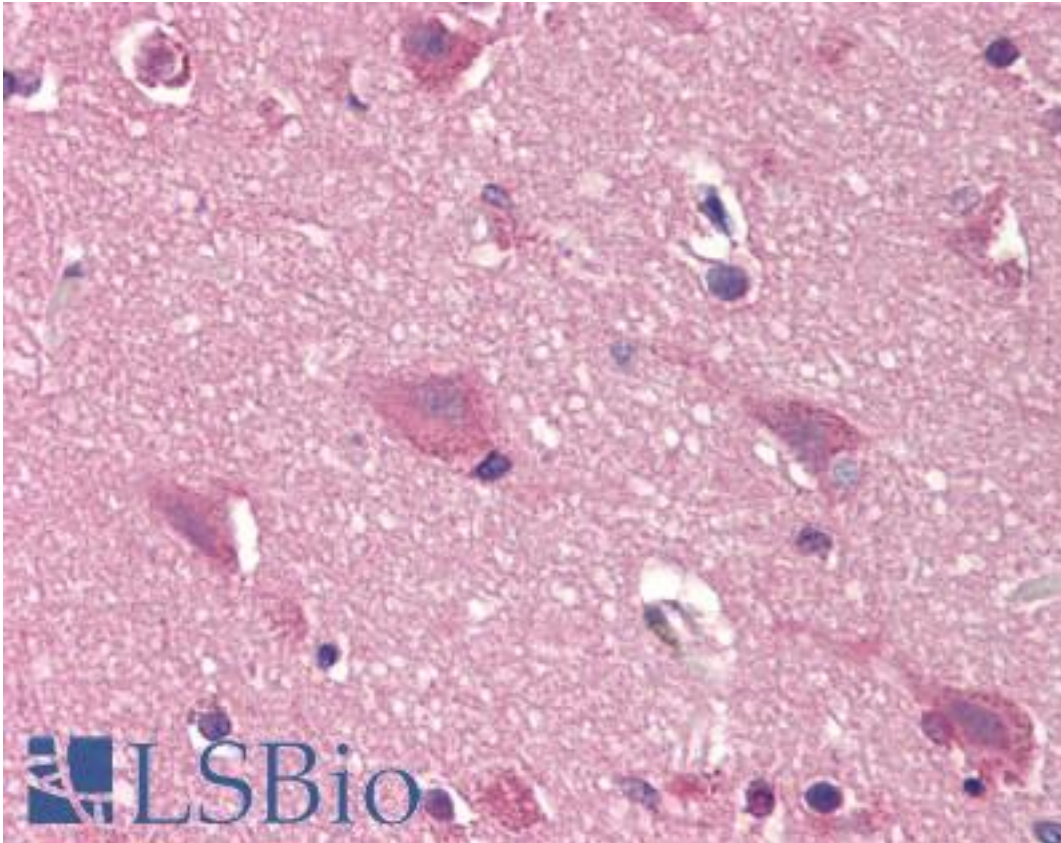


**DCK / Deoxycytidine kinase Rabbit anti-Human Polyclonal (N-Terminus) Antibody - LS-B1825 - LSBio**

<b>CatalogID:</b>	LS-B1825
<b>Validation:</b>	This antibody replaces catalog number LS-C46820. It has been validated for use in the following assays: IHC.
<b>Target:</b>	deoxycytidine kinase (DCK)
<b>Synonyms:</b>	DCK Antibody, Deoxynucleoside kinase Antibody, Deoxycytidine kinase Antibody
<b>Host</b>	DCK antibody was produced in Rabbit
<b>Clonality:</b>	Polyclonal
<b>Immunogen Species:</b>	DCK / Deoxycytidine kinase antibody was raised against Human
<b>Antigen Type:</b>	Synthetic peptide
<b>Immunogen:</b>	DCK / Deoxycytidine kinase antibody was raised against synthetic peptide from human DCK.
<b>Specificity:</b>	synthetic peptide corresponding to N-terminal residues of human DCK (deoxycytidine kinase)
<b>Epitope:</b>	N-Terminus
<b>Reactivity:</b>	Human
<b>Purification:</b>	Immunoaffinity purified
<b>Presentation:</b>	PBS, 0.01% sodium azide, 50% glycerol.
<b>Recommended Storage:</b>	+4°C or -20°C, Avoid repeated freezing and thawing.
<b>Usage Summary:</b>	Immunohistochemistry: LS-B1825 was validated for use in immunohistochemistry on a panel of 21 formalin-fixed, paraffin-embedded (FFPE) human tissues after heat induced antigen retrieval in pH 6.0 citrate buffer. After incubation with the primary antibody, slides were incubated with biotinylated secondary antibody, followed by alkaline phosphatase-streptavidin and chromogen. The stained slides were evaluated by a pathologist to confirm staining specificity. The optimal working concentration for LS-B1825 was determined to be 20 ug/ml.
<b>Uses:</b>	IHC - Paraffin (20 µg/ml), Western blot (1 µg/ml), ELISA (1 µg/ml) (Optimal dilution to be determined by the researcher)
<b>Size:</b>	50 µg
<b>Concentration:</b>	0.5 mg/ml

**Immunohistochemistry Image:**



Anti-DCK antibody IHC of human brain, cortex. Immunohistochemistry of formalin-fixed, paraffin-embedded tissue after heat-induced antigen retrieval. Antibody LS-B1825 concentration 20 ug/ml.

**Requested From:**

Japan

Laboratory Reagent For In Vitro Research Use Only

Not for resale without prior written consent from LifeSpan BioSciences, Inc.

Created on 9/23/2014

© 2014 LifeSpan BioSciences