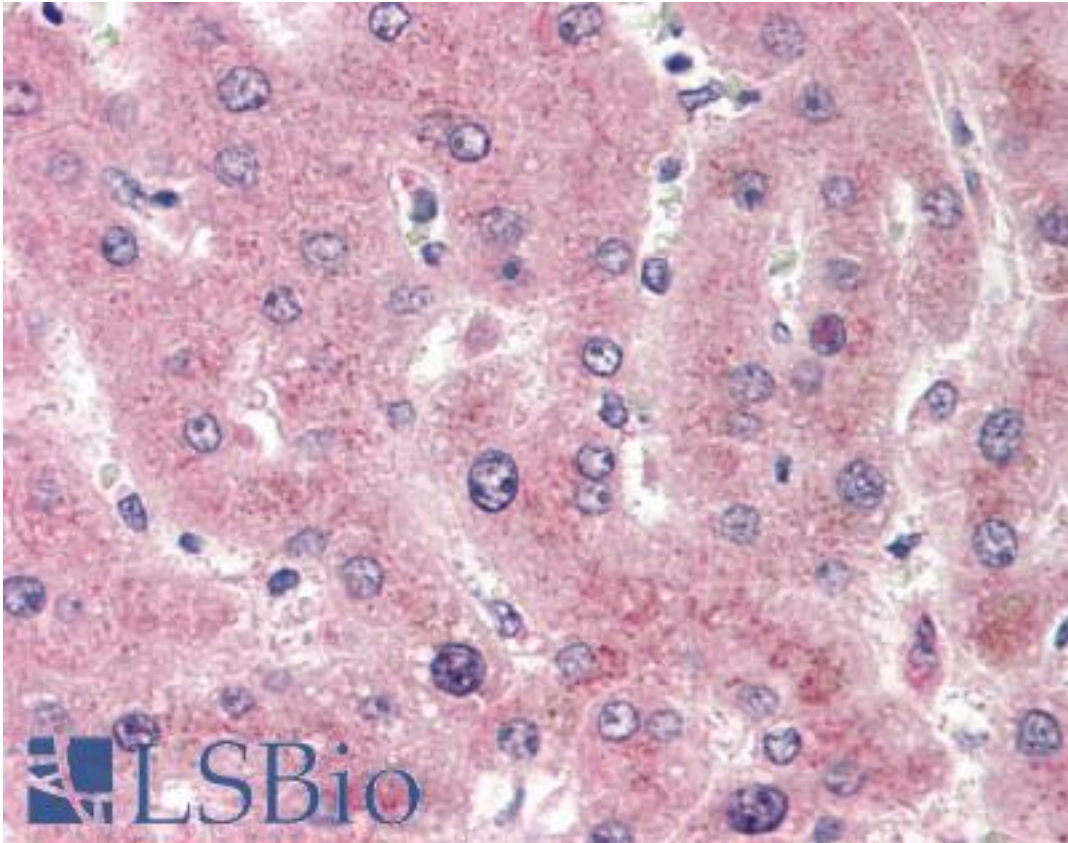


CYP2E1 Rabbit anti-Human Polyclonal (C-Terminus) Antibody - LS-B1824 - LSBio

CatalogID:	LS-B1824
Validation:	This antibody replaces catalog number LS-C47057. It has been validated for use in the following assays: IHC.
Target:	cytochrome P450, family 2, subfamily E, polypeptide 1 (CYP2E1)
Synonyms:	CYP2E1 Antibody, 4-nitrophenol 2-hydroxylase Antibody, CPE1 Antibody, Cytochrome p450 Ile1 Antibody, Cytochrome P450-J Antibody, p450C2E Antibody, p450-J Antibody, CYP2E Antibody, CYP1IE1 Antibody, Cytochrome P450 2E1 Antibody
Family / Subfamily:	Cytochrome P450 / not assigned-Cytochrome P450
Host	CYP2E1 antibody was produced in Rabbit
Clonality:	Polyclonal
Immunogen Species:	CYP2E1 antibody was raised against Human
Antigen Type:	Synthetic peptide
Immunogen:	CYP2E1 antibody was raised against synthetic peptide from human CYP2E1.
Specificity:	synthetic peptide corresponding to C-terminal residues of human CYP2E1 (Cytochrome P450 2E1)
Epitope:	C-Terminus
Reactivity:	Human
Purification:	Immunoaffinity purified
Presentation:	PBS, 0.01% sodium azide, 50% glycerol.
Recommended Storage:	Aliquot and store at -20°C. Minimize freezing and thawing.
Usage Summary:	Immunohistochemistry: LS-B1824 was validated for use in immunohistochemistry on a panel of 21 formalin-fixed, paraffin-embedded (FFPE) human tissues after heat induced antigen retrieval in pH 6.0 citrate buffer. After incubation with the primary antibody, slides were incubated with biotinylated secondary antibody, followed by alkaline phosphatase-streptavidin and chromogen. The stained slides were evaluated by a pathologist to confirm staining specificity. The optimal working concentration for LS-B1824 was determined to be 20 ug/ml.
Uses:	IHC - Paraffin (20 µg/ml), Western blot (1 µg/ml), ELISA (1 µg/ml) (Optimal dilution to be determined by the researcher)
Size:	50 µg
Concentration:	0.5 mg/ml

Immunohistochemistry Image:



Anti-CYP2E1 antibody IHC of human liver. Immunohistochemistry of formalin-fixed, paraffin-embedded tissue after heat-induced antigen retrieval. Antibody LS-B1824 concentration 20 ug/ml.

Requested From:

Japan

Laboratory Reagent For In Vitro Research Use Only

Not for resale without prior written consent from LifeSpan BioSciences, Inc.

Created on 9/23/2014

© 2014 LifeSpan BioSciences