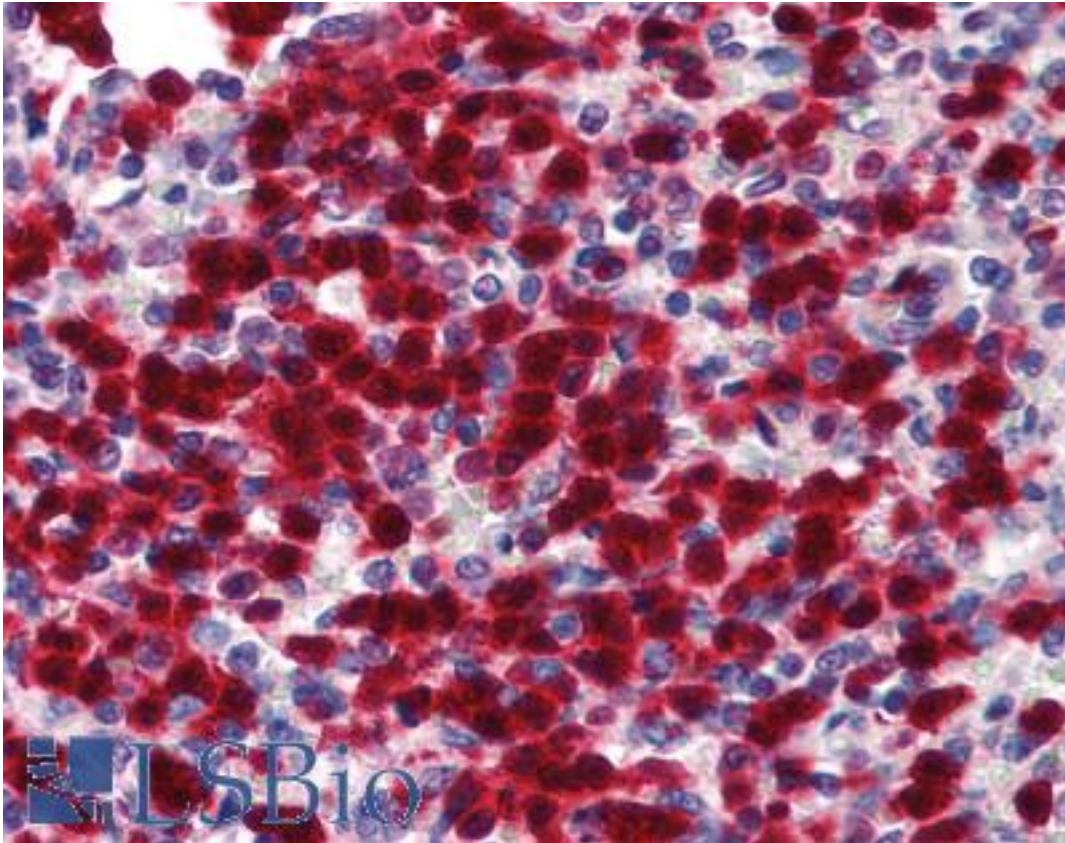


CDA / Cytidine Deaminase Rabbit anti-Human Polyclonal (N-Terminus) Antibody - LS-B1823 - LSBio	
<b>CatalogID:</b>	LS-B1823
<b>Validation:</b>	This antibody replaces catalog number LS-C46819. It has been validated for use in the following assays: IHC.
<b>Target:</b>	cytidine deaminase (CDA)
<b>Synonyms:</b>	CDA Antibody, Cytidine aminohydrolase Antibody, Cytidine deaminase Antibody, Small cytidine deaminase Antibody, CDD Antibody, Cytosine nucleoside deaminase Antibody
<b>Host</b>	CDA antibody was produced in Rabbit
<b>Clonality:</b>	Polyclonal
<b>Immunogen Species:</b>	CDA / Cytidine Deaminase antibody was raised against Human
<b>Antigen Type:</b>	Synthetic peptide
<b>Immunogen:</b>	CDA / Cytidine Deaminase antibody was raised against synthetic peptide from human CDA / Cytidine Deaminase.
<b>Specificity:</b>	synthetic peptide corresponding to N-terminal residues of human Cytidine deaminase (Cytidine aminohydrolase)
<b>Epitope:</b>	N-Terminus
<b>Reactivity:</b>	Human
<b>Purification:</b>	Immunoaffinity purified
<b>Presentation:</b>	PBS, 0.01% sodium azide, 50% glycerol.
<b>Recommended Storage:</b>	Long term: -20°C; Short term: +4°C. Avoid repeat freeze-thaw cycles.
<b>Usage Summary:</b>	Immunohistochemistry: LS-B1823 was validated for use in immunohistochemistry on a panel of 21 formalin-fixed, paraffin-embedded (FFPE) human tissues after heat induced antigen retrieval in pH 6.0 citrate buffer. After incubation with the primary antibody, slides were incubated with biotinylated secondary antibody, followed by alkaline phosphatase-streptavidin and chromogen. The stained slides were evaluated by a pathologist to confirm staining specificity. The optimal working concentration for LS-B1823 was determined to be 5 ug/ml.
<b>Uses:</b>	IHC - Paraffin (5 µg/ml), Western blot (1 µg/ml), ELISA (1 µg/ml) (Optimal dilution to be determined by the researcher)
<b>Size:</b>	50 µg
<b>Concentration:</b>	0.5 mg/ml

**Immunohistochemistry Image:**



Anti-Cytidine Deaminase antibody IHC of human spleen. Immunohistochemistry of formalin-fixed, paraffin-embedded tissue after heat-induced antigen retrieval. Antibody LS-B1823 concentration 5 ug/ml.

**Requested From:**

Japan

Laboratory Reagent For In Vitro Research Use Only

Not for resale without prior written consent from LifeSpan BioSciences, Inc.

Created on 9/23/2014

© 2014 LifeSpan BioSciences