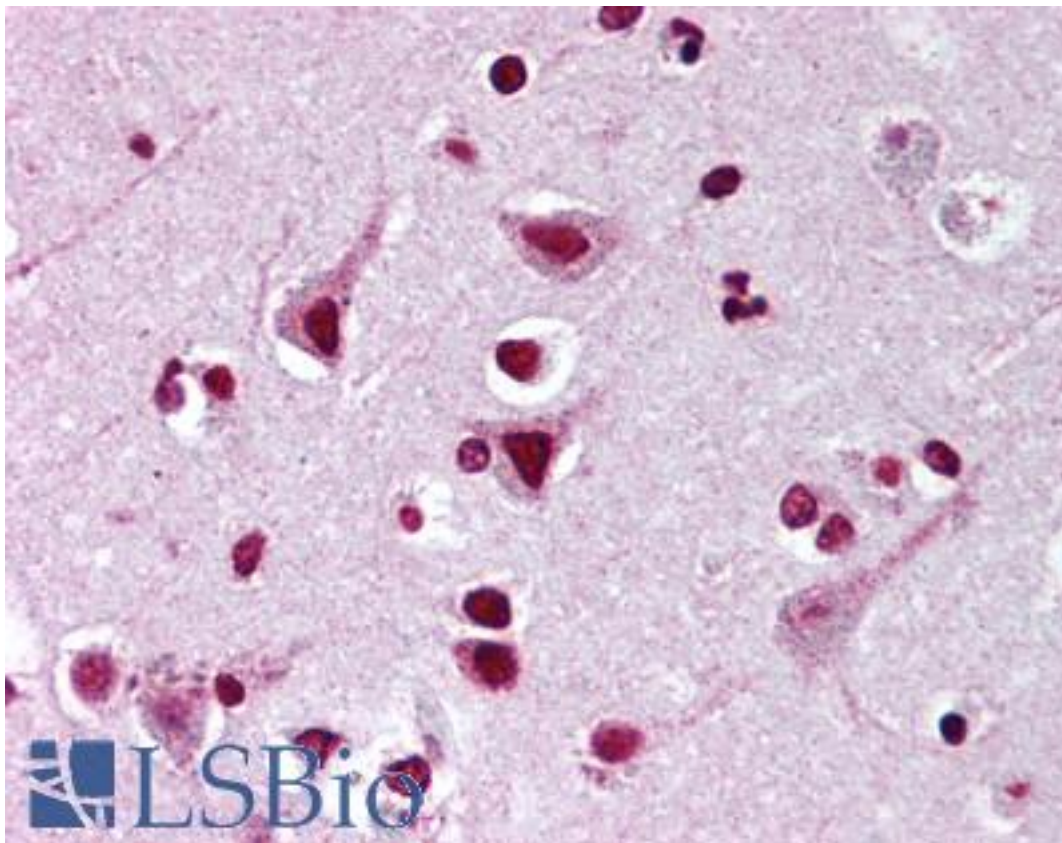


FMNL2 Rabbit anti-Human Polyclonal Antibody - LS-B1817 - LSBio

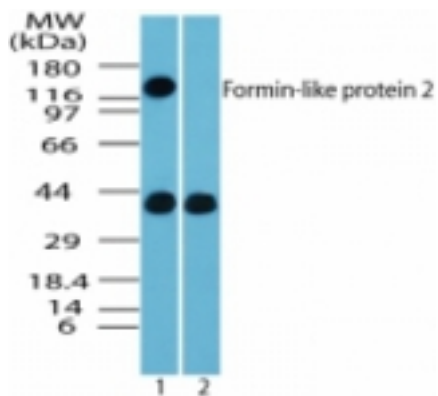
| | |
|-----------------------------|--|
| CatalogID: | LS-B1817 |
| Validation: | This antibody replaces catalog number LS-C47401. It has been validated for use in the following assays: IHC. |
| Target: | formin-like 2 (FMNL2) |
| Synonyms: | FMNL2 Antibody, Formin-like protein 2 Antibody, FHOD2 Antibody, KIAA1902 Antibody, Formin-like 2 Antibody |
| Host | FMNL2 antibody was produced in Rabbit |
| Clonality: | Polyclonal |
| Isotype: | IgG |
| Immunogen Species: | FMNL2 antibody was raised against Human |
| Antigen Type: | Synthetic peptide |
| Immunogen: | FMNL2 antibody was raised against synthetic peptide from human FMNL2. |
| Specificity: | A portion of amino acid 1-50 of human Formin-like protein 2 |
| Reactivity: | Human, Chimpanzee, Monkey, Mouse, Rat, Bovine |
| Purification: | Protein G purified |
| Presentation: | PBS, 0.05% BSA, 0.05% sodium azide. |
| Recommended Storage: | Short term 4°C, long term aliquot and store at -20°C, avoid freeze thaw cycles. |
| Usage Summary: | Immunohistochemistry: LS-B1817 was validated for use in immunohistochemistry on a panel of 21 formalin-fixed, paraffin-embedded (FFPE) human tissues after heat induced antigen retrieval in pH 6.0 citrate buffer. After incubation with the primary antibody, slides were incubated with biotinylated secondary antibody, followed by alkaline phosphatase-streptavidin and chromogen. The stained slides were evaluated by a pathologist to confirm staining specificity. The optimal working concentration for LS-B1817 was determined to be 5-10 ug/ml. |
| Uses: | IHC - Paraffin (5 - 10 µg/ml), Western blot (1 - 3 µg/ml) (Optimal dilution to be determined by the researcher) |
| Size: | 50 µg |
| Concentration: | 0.5 mg/ml |

Immunohistochemistry Image:



Anti-FMNL2 antibody IHC of human brain, cortex. Immunohistochemistry of formalin-fixed, paraffin-embedded tissue after heat-induced antigen retrieval. Antibody LS-B1817 concentration 10 ug/ml.

Western Blot Image:



Western blot of Formin-like protein 2 in whole mouse embryo body tissue lysate in the 1) absence and 2) presence of immunizing peptide using antibody at 2 ug/ml.

Requested From:

Japan

Laboratory Reagent For In Vitro Research Use Only

Not for resale without prior written consent from LifeSpan BioSciences, Inc.

Created on 9/23/2014

© 2014 LifeSpan BioSciences