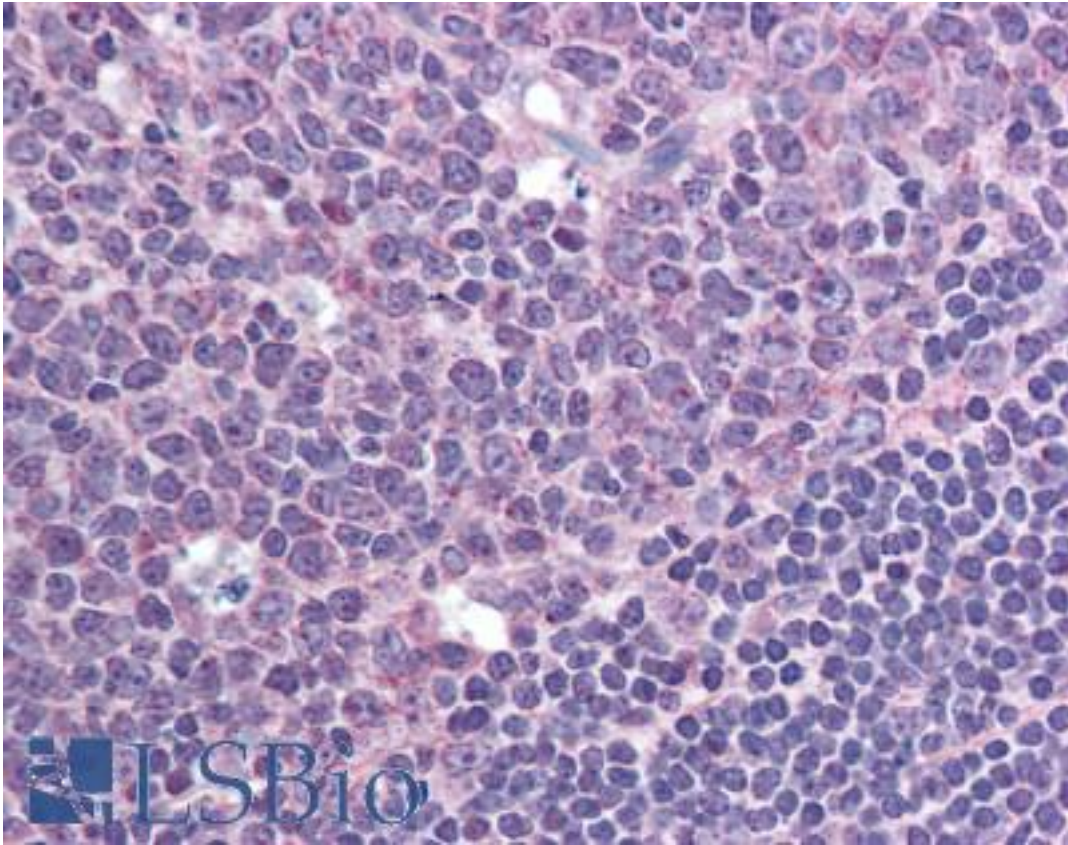


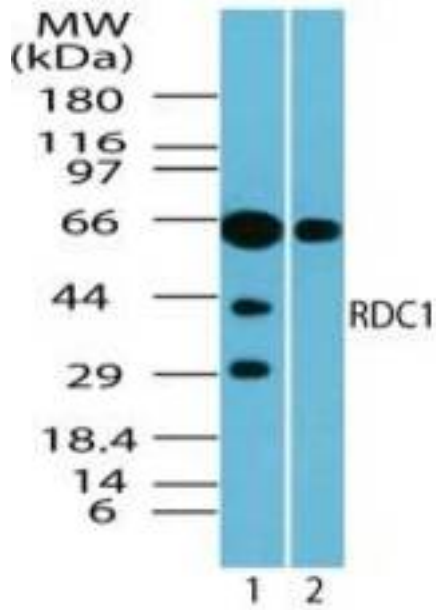
ACKR3 / CXCR7 / RDC1 Rabbit anti-Human Polyclonal (aa100-150) Antibody - LS-B1815 - LSBio	
<b>CatalogID:</b>	LS-B1815
<b>Validation:</b>	This antibody replaces catalog number LS-C47399. It has been validated for use in the following assays: IHC.
<b>Target:</b>	atypical chemokine receptor 3 (ACKR3)
<b>Synonyms:</b>	ACKR3 Antibody, Chemokine orphan receptor 1 Antibody, CMKOR1 Antibody, CXCR7 Antibody, CXC-R7 Antibody, GPRN1 Antibody, RDC1 Antibody, RDC-1 Antibody, CXCR-7 Antibody, G-protein coupled receptor 159 Antibody, GPR159 Antibody
<b>Family / Subfamily:</b>	GPCR / Chemokine
<b>Host</b>	ACKR3 antibody was produced in Rabbit
<b>Clonality:</b>	Polyclonal
<b>Isotype:</b>	IgG
<b>Immunogen Species:</b>	ACKR3 / CXCR7 / RDC1 antibody was raised against Human
<b>Antigen Type:</b>	Synthetic peptide
<b>Immunogen:</b>	ACKR3 / CXCR7 / RDC1 antibody was raised against a synthetic peptide (QHNQWPMGELTC) corresponding amino acids 106-117 of human CXCR7/RDC1 was used as the immunogen, GenBank NP_064707.1. Percent identity by BLAST analysis: Human, Gorilla, Gibbon, Monkey, Marmoset, Mouse, Rat, Hamster, Elephant, Panda, Bovine, Bat, Dog, Horse, Rabbit, Pig, Opossum (100%); Platypus, Xenopus (92%); Turkey (83%).
<b>Specificity:</b>	A portion of amino acids 100-150 of human RDC1
<b>Epitope:</b>	aa100-150
<b>Reactivity:</b>	Human, Gorilla, Gibbon, Monkey, Mouse, Rat, Bat, Bovine, Dog, Hamster, Horse, Pig, Rabbit
<b>Predicted Reactivity:</b>	Xenopus
<b>Purification:</b>	Protein G purified
<b>Presentation:</b>	PBS, 0.05% BSA, 0.05% sodium azide.
<b>Recommended Storage:</b>	Short term 4°C, long term aliquot and store at -20°C, avoid freeze thaw cycles.
<b>Usage Summary:</b>	Immunohistochemistry: LS-B1815 was validated for use in immunohistochemistry on a panel of 21 formalin-fixed, paraffin-embedded (FFPE) human tissues after heat induced antigen retrieval in pH 6.0 citrate buffer. After incubation with the primary antibody, slides were incubated with biotinylated secondary antibody, followed by alkaline phosphatase-streptavidin and chromogen. The stained slides were evaluated by a pathologist to confirm staining specificity. The optimal working concentration for LS-B1815 was determined to be 10 ug/ml.
<b>Uses:</b>	IHC - Paraffin (10 µg/ml), Western blot (4 - 6 µg/ml), Flow Cytometry (1 - 10 µg/ml) (Optimal dilution to be determined by the researcher)
<b>Size:</b>	50 µg
<b>Concentration:</b>	0.5 mg/ml

**Immunohistochemistry Image:**



Anti-CXCR7 antibody IHC of human tonsil. Immunohistochemistry of formalin-fixed, paraffin-embedded tissue after heat-induced antigen retrieval. Antibody LS-B1815 concentration 10 ug/ml.

**Western Blot Image:**



Western blot of human CXCR7/RDC1 in Jurkat cell lysate in the 1) absence and 2) presence of immunizing peptide using LS-B1815 at 5 ug/ml.

**Requested From:**

Japan

Laboratory Reagent For In Vitro Research Use Only

Not for resale without prior written consent from LifeSpan BioSciences, Inc.

Created on 9/23/2014

© 2014 LifeSpan BioSciences