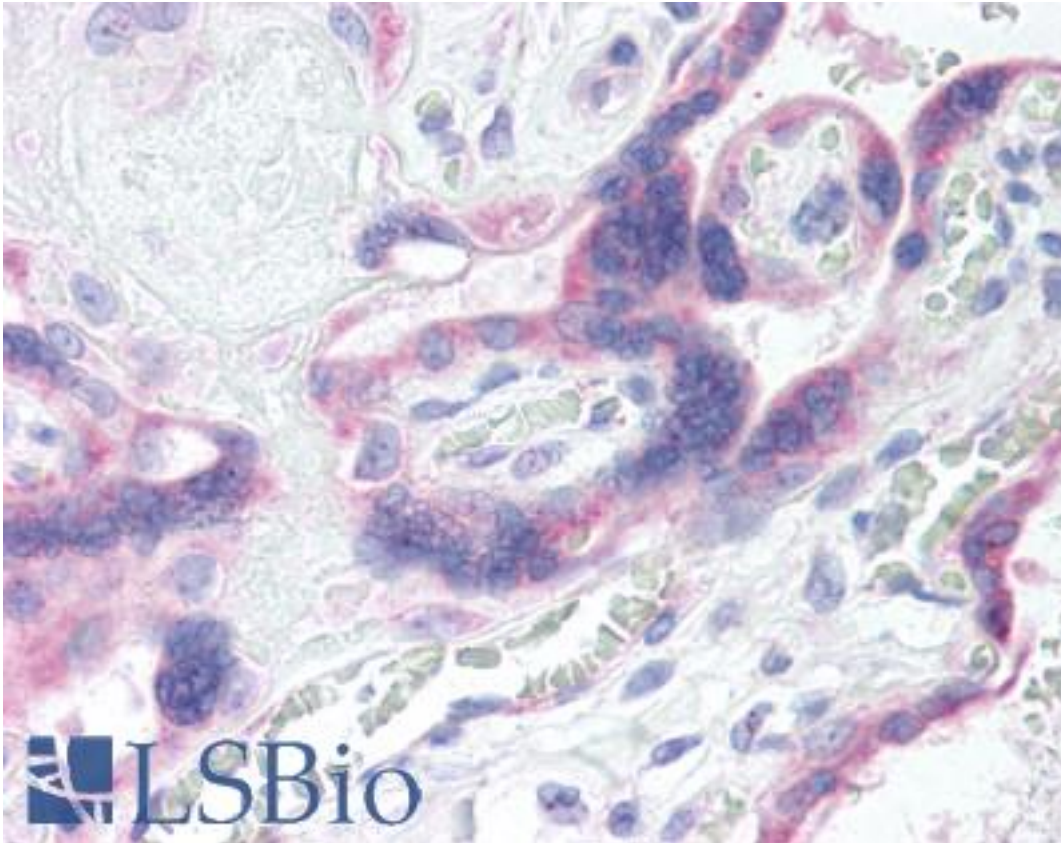


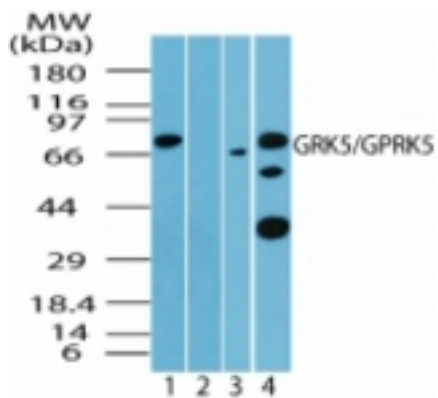
GRK5 Rabbit anti-Human Polyclonal Antibody - LS-B1813 - LSBio	
CatalogID:	LS-B1813
Validation:	This antibody replaces catalog number LS-C47397. It has been validated for use in the following assays: IHC.
Target:	G protein-coupled receptor kinase 5 (GRK5)
Synonyms:	GRK5 Antibody, FP2025 Antibody, GPRK5 Antibody
Family / Subfamily:	Protein Kinase / GPRK
Host	GRK5 antibody was produced in Rabbit
Clonality:	Polyclonal
Immunogen Species:	GRK5 antibody was raised against Human
Antigen Type:	Synthetic peptide
Immunogen:	GRK5 antibody was raised against synthetic peptide from human GRK5.
Specificity:	A portion of amino acid 350-400 of human GRK5
Reactivity:	Human, Mouse, Rat, Bovine, Chicken, Pufferfish, Zebrafish
Purification:	Immunoaffinity purified
Presentation:	PBS, 0.2% gelatin, 0.05% sodium azide.
Recommended Storage:	Short term 4°C, long term aliquot and store at -20°C, avoid freeze thaw cycles.
Usage Summary:	Immunohistochemistry: LS-B1813 was validated for use in immunohistochemistry on a panel of 21 formalin-fixed, paraffin-embedded (FFPE) human tissues after heat induced antigen retrieval in pH 6.0 citrate buffer. After incubation with the primary antibody, slides were incubated with biotinylated secondary antibody, followed by alkaline phosphatase-streptavidin and chromogen. The stained slides were evaluated by a pathologist to confirm staining specificity. The optimal working concentration for LS-B1813 was determined to be 20 ug/ml.
Uses:	IHC - Paraffin (20 µg/ml), Western blot (0.5 - 4 µg/ml) (Optimal dilution to be determined by the researcher)
Size:	50 µg
Concentration:	0.5 mg/ml

Immunohistochemistry Image:



Anti-GRK5 antibody IHC of human placenta. Immunohistochemistry of formalin-fixed, paraffin-embedded tissue after heat-induced antigen retrieval. Antibody LS-B1813 concentration 20 ug/ml.

Western Blot Image:



Western blot of human GRK5 in human liver lysate in the 1) absence, 2) presence of immunizing peptide, 3) mouse and 4) rat liver using antibody at 0.5 ug/ml (human), 4.0 ug/ml (mouse) and 2 ug/ml (rat).

Requested From:

Japan

Laboratory Reagent For In Vitro Research Use Only

Not for resale without prior written consent from LifeSpan BioSciences, Inc.

Created on 9/23/2014

© 2014 LifeSpan BioSciences