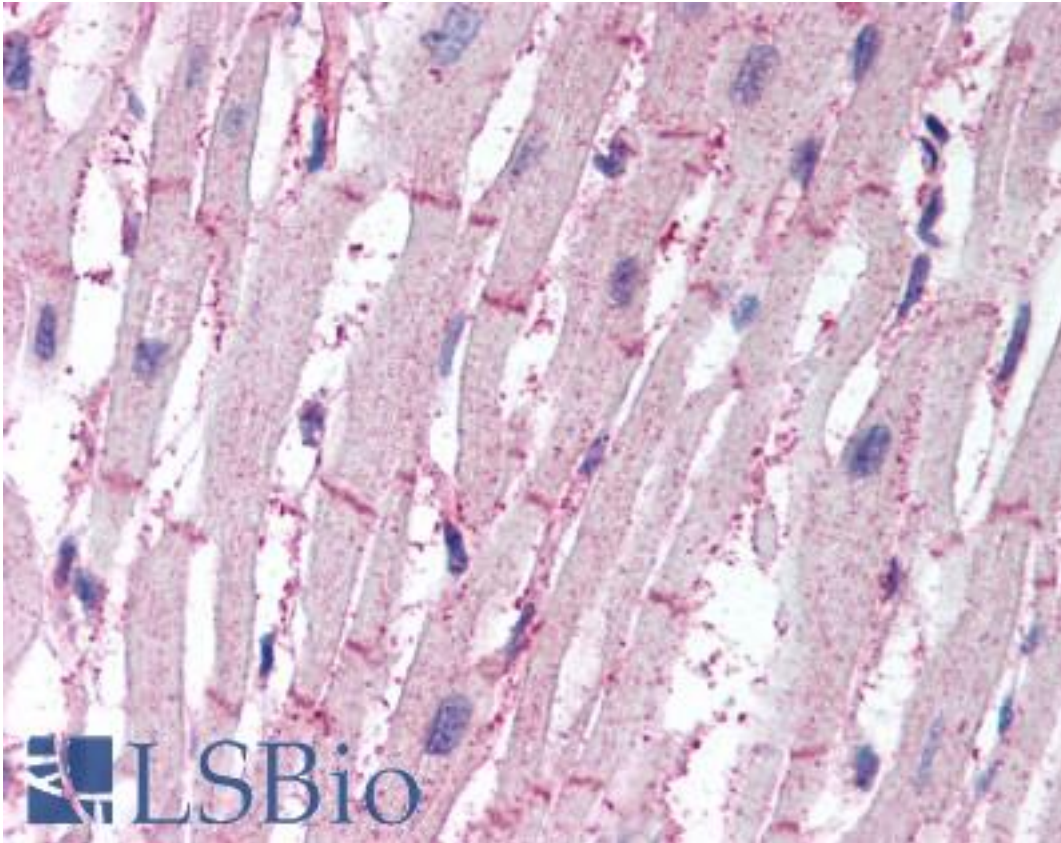


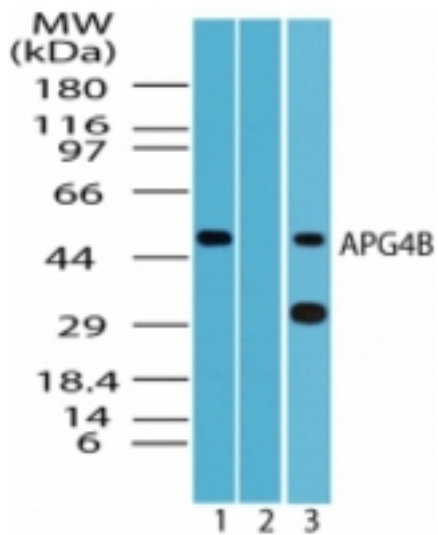
| APG4B / ATG4B Rabbit anti-Human Polyclonal Antibody - LS-B1812 - LSBio | |
|--|--|
| CatalogID: | LS-B1812 |
| Validation: | This antibody replaces catalog number LS-C47396. It has been validated for use in the following assays: IHC. |
| Target: | autophagy related 4B, cysteine peptidase (ATG4B) |
| Synonyms: | ATG4B Antibody, APG4 autophagy 4 homolog B Antibody, AUTL1 Antibody, Autophagin-1 Antibody, Cysteine protease ATG4B Antibody, HAPG4B Antibody, APG4B Antibody, KIAA0943 Antibody |
| Host | ATG4B antibody was produced in Rabbit |
| Clonality: | Polyclonal |
| Isotype: | IgG |
| Immunogen Species: | APG4B / ATG4B antibody was raised against Human |
| Antigen Type: | Synthetic peptide |
| Immunogen: | APG4B / ATG4B antibody was raised against synthetic peptide from human ATG4B. |
| Specificity: | A portion of amino acid 350-400 of human APG4B |
| Reactivity: | Human, Mouse, Rat, Chicken, Xenopus, Pufferfish, Zebrafish |
| Purification: | Protein G purified |
| Presentation: | PBS, 0.2% gelatin, 0.05% sodium azide. |
| Recommended Storage: | Short term 4°C, long term aliquot and store at -20°C, avoid freeze thaw cycles. |
| Usage Summary: | Immunohistochemistry: LS-B1812 was validated for use in immunohistochemistry on a panel of 21 formalin-fixed, paraffin-embedded (FFPE) human tissues after heat induced antigen retrieval in pH 6.0 citrate buffer. After incubation with the primary antibody, slides were incubated with biotinylated secondary antibody, followed by alkaline phosphatase-streptavidin and chromogen. The stained slides were evaluated by a pathologist to confirm staining specificity. The optimal working concentration for LS-B1812 was determined to be 10 ug/ml. |
| Uses: | IHC - Paraffin (10 µg/ml), Western blot (1 - 3 µg/ml) (Optimal dilution to be determined by the researcher) |
| Size: | 50 µg |
| Concentration: | 0.5 mg/ml |

Immunohistochemistry Image:



Anti-ATG4B antibody IHC of human heart. Immunohistochemistry of formalin-fixed, paraffin-embedded tissue after heat-induced antigen retrieval. Antibody LS-B1812 concentration 10 ug/ml.

Western Blot Image:



Western blot of APG4B in HeLa cell lysate in the 1) absence, and 2) presence of immunizing peptide and 3) RAW cell lysate using antibody at 2 ug/ml.

Requested From:

Japan

Laboratory Reagent For In Vitro Research Use Only

Not for resale without prior written consent from LifeSpan BioSciences, Inc.

Created on 9/23/2014

© 2014 LifeSpan BioSciences