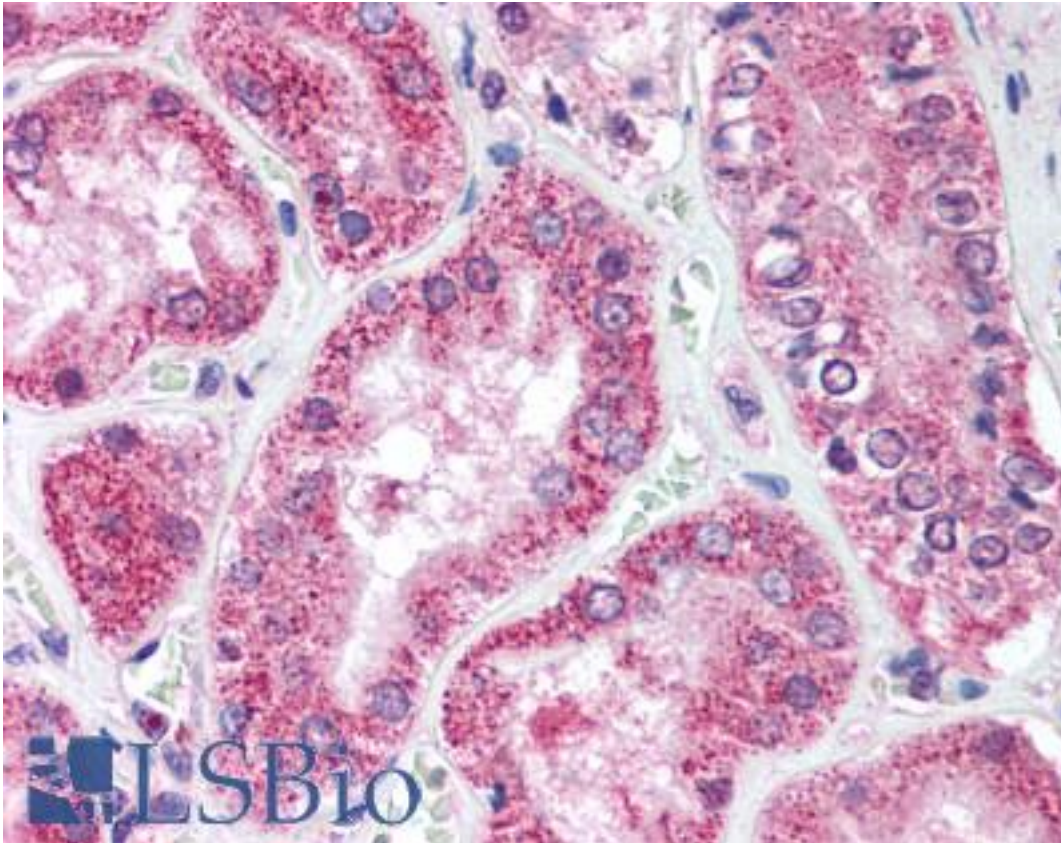


ULK1 Rabbit anti-Human Polyclonal Antibody - LS-B1811 - LSBio

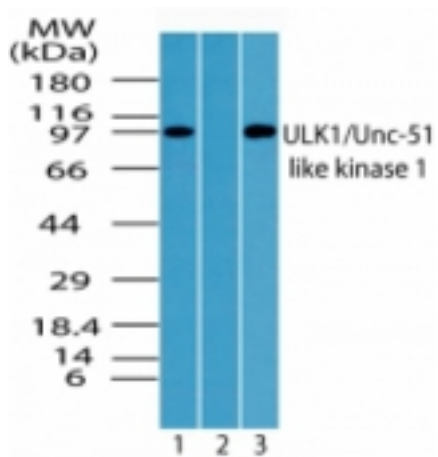
CatalogID:	LS-B1811
Validation:	This antibody replaces catalog number LS-C47392. It has been validated for use in the following assays: IHC.
Target:	unc-51 like autophagy activating kinase 1 (ULK1)
Synonyms:	ULK1 Antibody, ATG1A Antibody, ATG1 Antibody, HATG1 Antibody, KIAA0722 Antibody, Unc-51-like kinase 1 Antibody, Unc51.1 Antibody, UNC51 Antibody
Family / Subfamily:	Protein Kinase / ULK
Host	ULK1 antibody was produced in Rabbit
Clonality:	Polyclonal
Isotype:	IgG
Immunogen Species:	ULK1 antibody was raised against Human
Antigen Type:	Synthetic peptide
Immunogen:	ULK1 antibody was raised against synthetic peptide from human ULK1.
Specificity:	A portion of amino acid 320-370 of human ULK1
Reactivity:	Human, Monkey
Purification:	Protein G purified
Presentation:	PBS, 0.2% gelatin, 0.05% sodium azide.
Recommended Storage:	Short term 4°C, long term aliquot and store at -20°C, avoid freeze thaw cycles.
Usage Summary:	Immunohistochemistry: LS-B1811 was validated for use in immunohistochemistry on a panel of 21 formalin-fixed, paraffin-embedded (FFPE) human tissues after heat induced antigen retrieval in pH 6.0 citrate buffer. After incubation with the primary antibody, slides were incubated with biotinylated secondary antibody, followed by alkaline phosphatase-streptavidin and chromogen. The stained slides were evaluated by a pathologist to confirm staining specificity. The optimal working concentration for LS-B1811 was determined to be 10 ug/ml.
Uses:	IHC - Paraffin (10 µg/ml), Western blot (1 - 3 µg/ml) (Optimal dilution to be determined by the researcher)
Size:	50 µg
Concentration:	0.5 mg/ml

Immunohistochemistry Image:



Anti-ULK1 antibody IHC of human kidney. Immunohistochemistry of formalin-fixed, paraffin-embedded tissue after heat-induced antigen retrieval. Antibody LS-B1811 concentration 10 ug/ml.

Western Blot Image:



Western blot of ULK1 in Raji cell lysate in the 1) absence, 2) presence of immunizing peptide and 3) RAW using antibody at 2 ug/ml.

Requested From:

Japan

Laboratory Reagent For In Vitro Research Use Only

Not for resale without prior written consent from LifeSpan BioSciences, Inc.

Created on 9/23/2014

© 2014 LifeSpan BioSciences