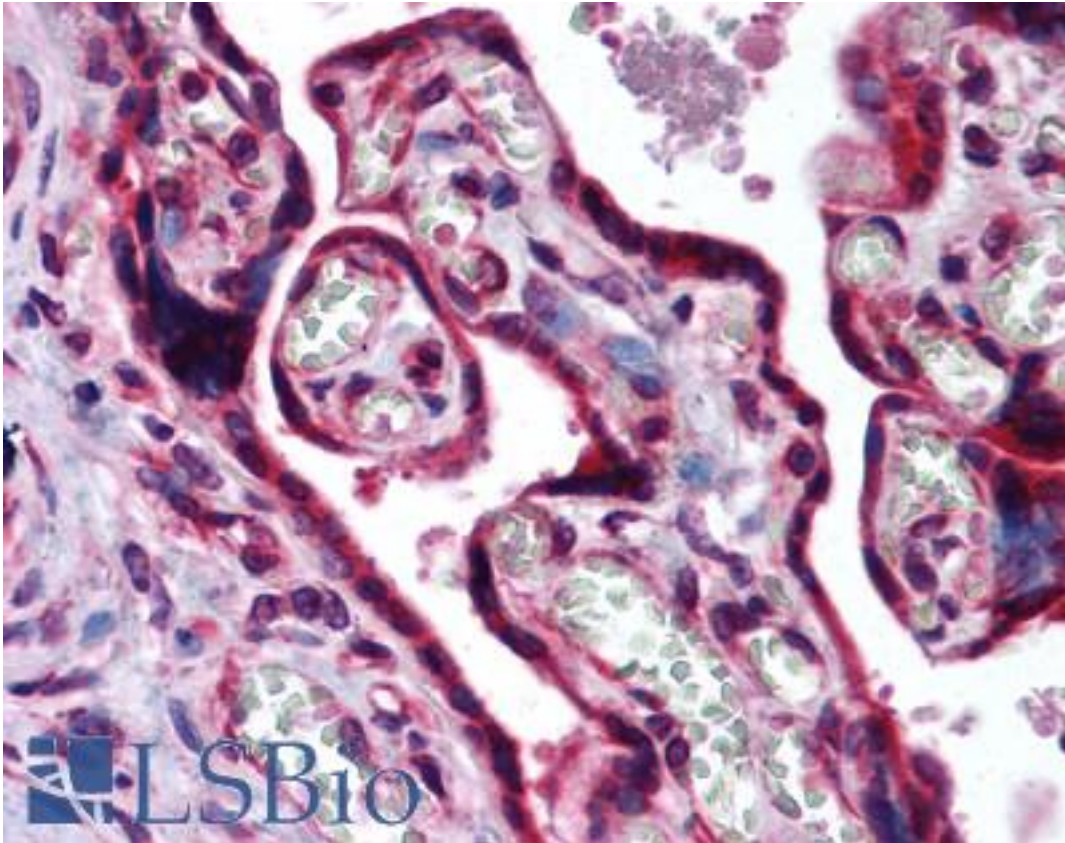


c-Maf Rabbit anti-Human Polyclonal (aa50-100) Antibody - LS-B1809 - LSBio	
CatalogID:	LS-B1809
Validation:	This antibody replaces catalog number LS-C47385. It has been validated for use in the following assays: IHC.
Target:	v-maf avian musculoaponeurotic fibrosarcoma oncogene homolog
Synonyms:	MAF Antibody, C-MAF Antibody, CCA4 Antibody, C-maf proto-oncogene Antibody, Proto-oncogene c-Maf Antibody, T lymphocyte c-maf long form Antibody, Transcription factor Maf Antibody
Host	MAF antibody was produced in Rabbit
Clonality:	Polyclonal
Immunogen Species:	c-Maf antibody was raised against Human
Antigen Type:	Synthetic peptide
Immunogen:	c-Maf antibody was raised against a synthetic peptide corresponding to amino acids 75-90 (APSPGSGSEQKAHLED) of human c-maf was used as the immunogen, GenBank no. NP_001026974.1]. Percent identity by BLAST analysis: Human, Gorilla, Gibbon, Marmoset, Mouse, Rat, Elephant, Dog, Bovine, Stickleback, Pufferfish, Zebrafish (100%); Xenopus (94%); Opossum (88%); Chicken (81%).
Specificity:	A portion of amino acids 50-100 of human c-maf
Epitope:	aa50-100
Reactivity:	Human, Gorilla, Gibbon, Monkey, Mouse, Rat, Bovine, Dog, Zebrafish
Predicted Reactivity:	Xenopus
Purification:	Immunoaffinity purified
Presentation:	PBS, 0.2% gelatin, 0.05% sodium azide.
Recommended Storage:	Short term 4°C, long term aliquot and store at -20°C, avoid freeze thaw cycles.
Usage Summary:	Immunohistochemistry: LS-B1809 was validated for use in immunohistochemistry on a panel of 21 formalin-fixed, paraffin-embedded (FFPE) human tissues after heat induced antigen retrieval in pH 6.0 citrate buffer. After incubation with the primary antibody, slides were incubated with biotinylated secondary antibody, followed by alkaline phosphatase-streptavidin and chromogen. The stained slides were evaluated by a pathologist to confirm staining specificity. The optimal working concentration for LS-B1809 was determined to be 10 ug/ml.
Uses:	IHC - Paraffin (10 µg/ml), Western blot (2 - 4 µg/ml) (Optimal dilution to be determined by the researcher)
Size:	50 µg
Concentration:	0.5 mg/ml

Immunohistochemistry Image:



Anti-MAF antibody IHC of human placenta. Immunohistochemistry of formalin-fixed, paraffin-embedded tissue after heat-induced antigen retrieval. Antibody LS-B1809 concentration 10 ug/ml.

Requested From:

Japan

Laboratory Reagent For In Vitro Research Use Only

Not for resale without prior written consent from LifeSpan BioSciences, Inc.

Created on 9/23/2014

© 2014 LifeSpan BioSciences