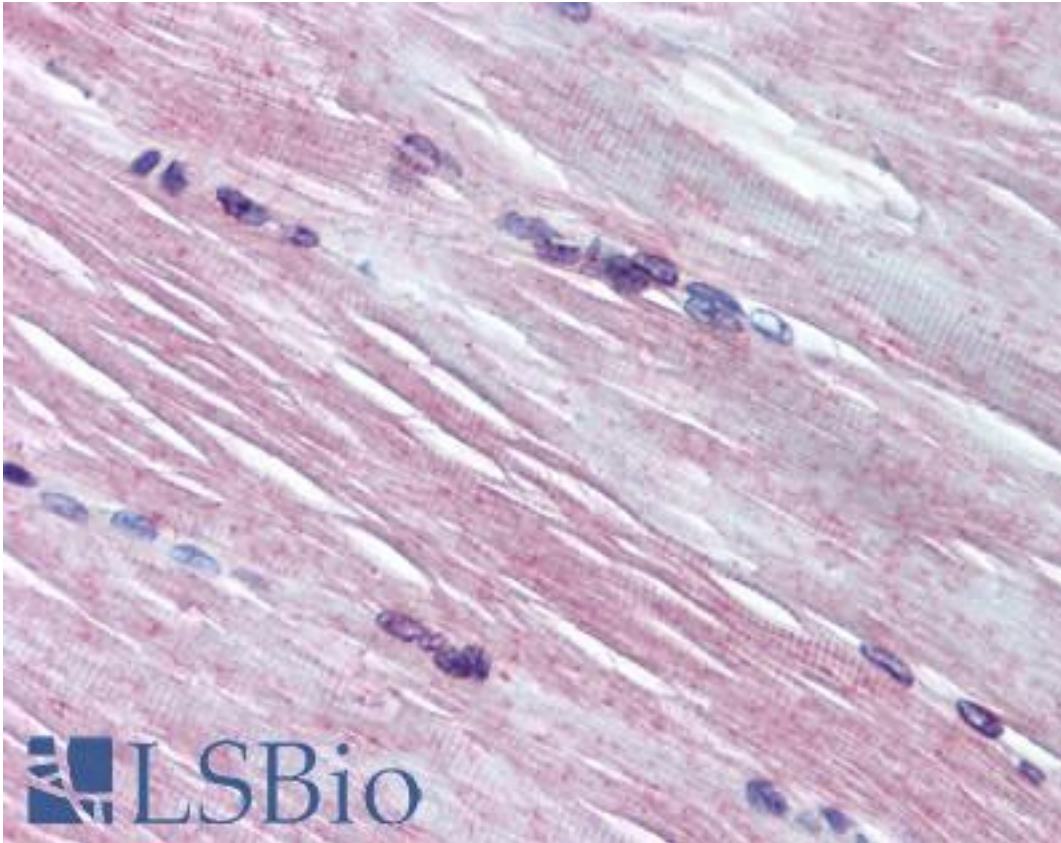


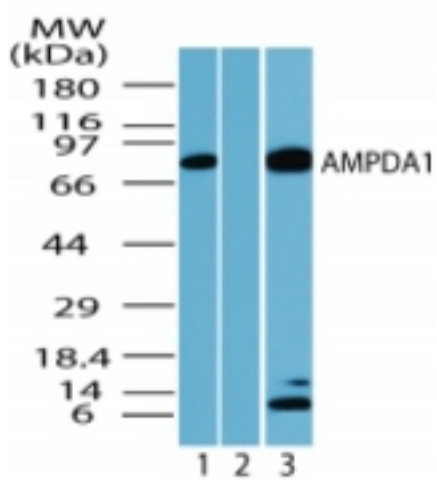
AMPD1 / MAD Rabbit anti-Human Polyclonal (aa140-190) Antibody - LS-B1806 - LSBio	
CatalogID:	LS-B1806
Validation:	This antibody replaces catalog number LS-C47377. It has been validated for use in the following assays: IHC.
Target:	adenosine monophosphate deaminase 1 (AMPD1)
Synonyms:	AMPD1 Antibody, AMP deaminase isoform M Antibody, AMP deaminase 1 Antibody, AMPD Antibody, Skeletal muscle AMPD Antibody, MAD Antibody, MADA Antibody, Myoadenylate deaminase Antibody
Host	AMPD1 antibody was produced in Rabbit
Clonality:	Polyclonal
Immunogen Species:	AMPD1 / MAD antibody was raised against Human
Antigen Type:	Synthetic peptide
Immunogen:	AMPD1 / MAD antibody was raised against synthetic peptide from human AMPD1.
Specificity:	A portion of amino acids 140-190 of human AMPDA1
Epitope:	aa140-190
Reactivity:	Human, Chimpanzee, Monkey, Mouse, Rat, Bovine, Dog, Zebrafish
Purification:	Immunoaffinity purified
Presentation:	PBS, 0.2% gelatin, 0.05% sodium azide.
Recommended Storage:	Short term 4°C, long term aliquot and store at -20°C, avoid freeze thaw cycles.
Usage Summary:	Immunohistochemistry: LS-B1806 was validated for use in immunohistochemistry on a panel of 21 formalin-fixed, paraffin-embedded (FFPE) human tissues after heat induced antigen retrieval in pH 6.0 citrate buffer. After incubation with the primary antibody, slides were incubated with biotinylated secondary antibody, followed by alkaline phosphatase-streptavidin and chromogen. The stained slides were evaluated by a pathologist to confirm staining specificity. The optimal working concentration for LS-B1806 was determined to be 10 ug/ml.
Uses:	IHC - Paraffin (10 µg/ml), Western blot (0.5 - 2 µg/ml) (Optimal dilution to be determined by the researcher)
Size:	50 µg
Concentration:	0.5 mg/ml

Immunohistochemistry Image:



Anti-AMPD1 antibody IHC of human skeletal muscle. Immunohistochemistry of formalin-fixed, paraffin-embedded tissue after heat-induced antigen retrieval. Antibody LS-B1806 concentration 10 ug/ml.

Western Blot Image:



Western blot of human AMPD1 in mouse skeletal muscle lysate in the 1) absence, 2) presence of immunizing peptide and 3) rat skeletal muscle using antibody at 1 ug/ml.

Requested From:

Japan

Laboratory Reagent For In Vitro Research Use Only

Not for resale without prior written consent from LifeSpan BioSciences, Inc.

Created on 9/23/2014

© 2014 LifeSpan BioSciences