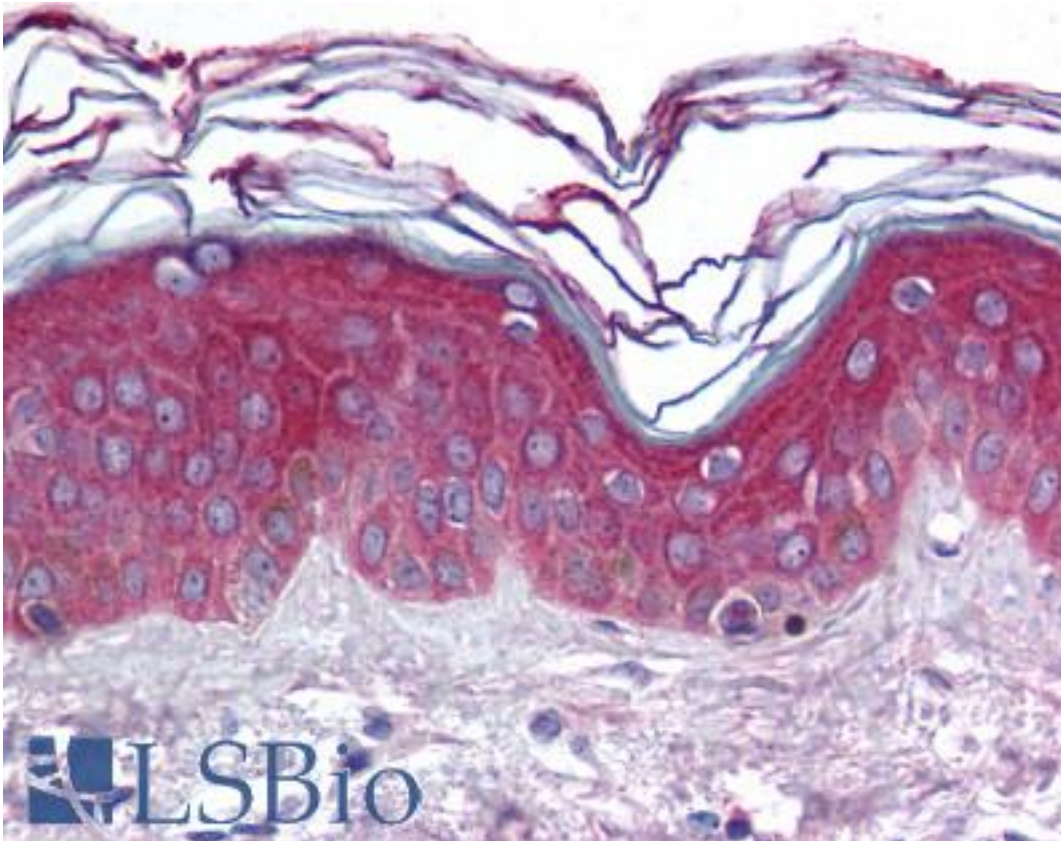


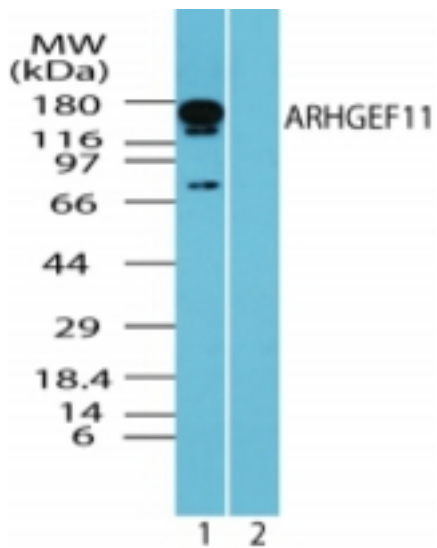
ARHGEF11 Rabbit anti-Human Polyclonal (aa1-50) Antibody - LS-B1801 - LSBio	
CatalogID:	LS-B1801
Validation:	This antibody replaces catalog number LS-C47368. It has been validated for use in the following assays: IHC.
Target:	Rho guanine nucleotide exchange factor (GEF) 11 (ARHGEF11)
Synonyms:	ARHGEF11 Antibody, GTRAP48 Antibody, PDZ-RHOGEF Antibody, KIAA0380 Antibody
Host	ARHGEF11 antibody was produced in Rabbit
Clonality:	Polyclonal
Immunogen Species:	ARHGEF11 antibody was raised against Human
Antigen Type:	Synthetic peptide
Immunogen:	ARHGEF11 antibody was raised against synthetic peptide from human ARHGEF11.
Specificity:	A portion of amino acids 1-50 of human ARHGEF11
Epitope:	aa1-50
Reactivity:	Human, Chimpanzee, Monkey, Mouse, Rat, Bovine, Dog, Horse, Chicken
Purification:	Immunoaffinity purified
Presentation:	PBS, 0.2% gelatin, 0.05% sodium azide.
Recommended Storage:	Short term 4°C, long term aliquot and store at -20°C, avoid freeze thaw cycles.
Usage Summary:	Immunohistochemistry: LS-B1801 was validated for use in immunohistochemistry on a panel of 21 formalin-fixed, paraffin-embedded (FFPE) human tissues after heat induced antigen retrieval in pH 6.0 citrate buffer. After incubation with the primary antibody, slides were incubated with biotinylated secondary antibody, followed by alkaline phosphatase-streptavidin and chromogen. The stained slides were evaluated by a pathologist to confirm staining specificity. The optimal working concentration for LS-B1801 was determined to be 10 ug/ml.
Uses:	IHC - Paraffin (10 µg/ml), Western blot (0.1 - 0.5 µg/ml) (Optimal dilution to be determined by the researcher)
Size:	50 µg
Concentration:	0.5 mg/ml

Immunohistochemistry Image:



Anti-ARHGEF11 antibody IHC of human skin. Immunohistochemistry of formalin-fixed, paraffin-embedded tissue after heat-induced antigen retrieval. Antibody LS-B1801 concentration 10 ug/ml.

Western Blot Image:



Western blot of human ARHGEF11 in rat brain lysate in the 1) absence and 2) presence of immunizing peptide using antibody at 0.1 ug/ml.

Requested From:	Japan
Laboratory Reagent For In Vitro Research Use Only	
Not for resale without prior written consent from LifeSpan BioSciences, Inc.	
Created on 9/23/2014	
© 2014 LifeSpan BioSciences	