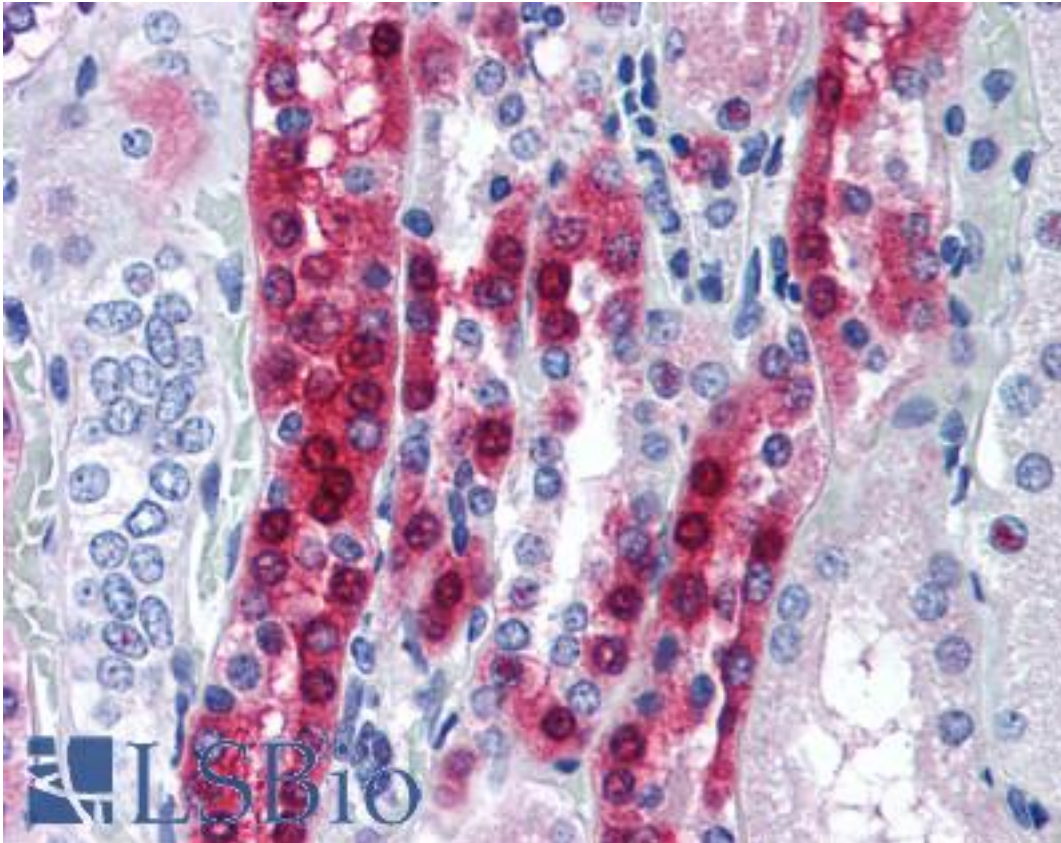


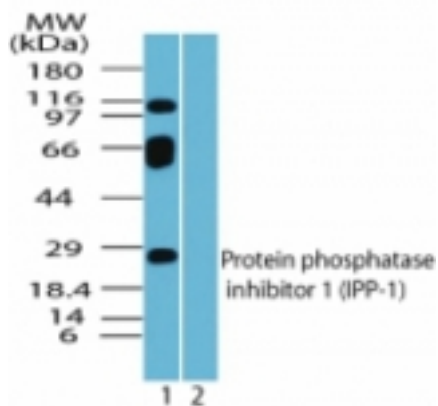
PPP1R1A / IPP1 Rabbit anti-Human Polyclonal (aa50-100) Antibody - LS-B1799 - LSBio	
CatalogID:	LS-B1799
Validation:	This antibody replaces catalog number LS-C47354. It has been validated for use in the following assays: IHC.
Target:	protein phosphatase 1, regulatory (inhibitor) subunit 1A (PPP1R1A)
Synonyms:	PPP1R1A Antibody, I-1 Antibody, I1 Antibody, Inhibitor-1 Antibody, IPP1 Antibody, IPP-1 Antibody
Host	PPP1R1A antibody was produced in Rabbit
Clonality:	Polyclonal
Immunogen Species:	PPP1R1A / IPP1 antibody was raised against Human
Antigen Type:	Synthetic peptide
Immunogen:	PPP1R1A / IPP1 antibody was raised against synthetic peptide from human PPP1R1A.
Specificity:	A portion of amino acids 50-100 of human IPP-1
Epitope:	aa50-100
Reactivity:	Human, Chimpanzee, Monkey, Mouse, Rat, Bovine, Dog, Horse, Xenopus
Purification:	Immunoaffinity purified
Presentation:	PBS, 0.2% gelatin, 0.05% sodium azide.
Recommended Storage:	Short term 4°C, long term aliquot and store at -20°C, avoid freeze thaw cycles.
Usage Summary:	Immunohistochemistry: LS-B1799 was validated for use in immunohistochemistry on a panel of 21 formalin-fixed, paraffin-embedded (FFPE) human tissues after heat induced antigen retrieval in pH 6.0 citrate buffer. After incubation with the primary antibody, slides were incubated with biotinylated secondary antibody, followed by alkaline phosphatase-streptavidin and chromogen. The stained slides were evaluated by a pathologist to confirm staining specificity. The optimal working concentration for LS-B1799 was determined to be 10 ug/ml.
Uses:	IHC - Paraffin (10 µg/ml), Western blot (0.5 - 2 µg/ml) (Optimal dilution to be determined by the researcher)
Size:	50 µg
Concentration:	0.5 mg/ml

Immunohistochemistry Image:



Anti-PPP1R1A antibody IHC of human kidney. Immunohistochemistry of formalin-fixed, paraffin-embedded tissue after heat-induced antigen retrieval. Antibody LS-B1799 concentration 10 ug/ml.

Western Blot Image:



Western blot of IPP-1 in human ovary lysate in the 1) absence and 2) presence of immunizing peptide using antibody at 1 ug/ml.

Requested From:

Japan

Laboratory Reagent For In Vitro Research Use Only

Not for resale without prior written consent from LifeSpan BioSciences, Inc.

Created on 9/23/2014

© 2014 LifeSpan BioSciences