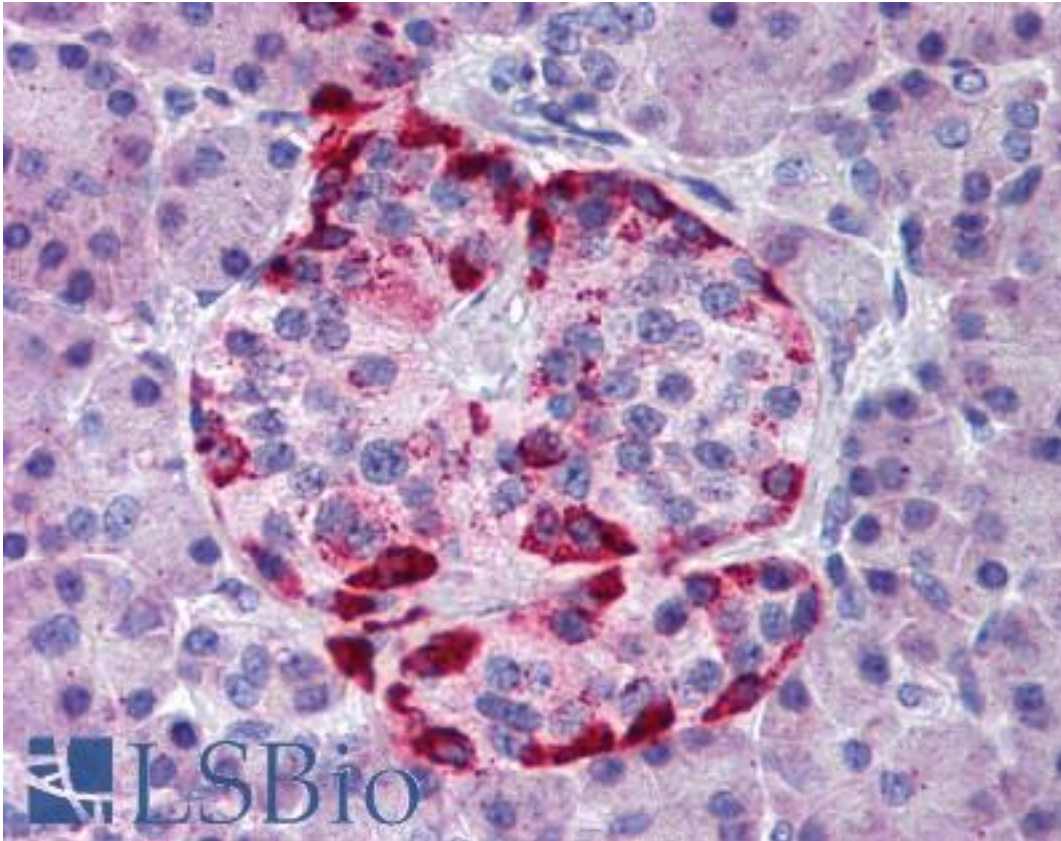


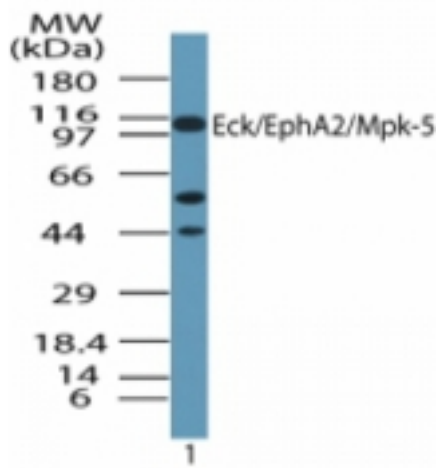
EPHA2 / EPH Receptor A2 Rabbit anti-Human Polyclonal (aa450-500) Antibody - LS-B1794 - LSBio	
<b>CatalogID:</b>	LS-B1794
<b>Validation:</b>	This antibody replaces catalog number LS-C47348. It has been validated for use in the following assays: IHC.
<b>Target:</b>	EPH receptor A2 (EPHA2)
<b>Synonyms:</b>	EPHA2 Antibody, CTPA Antibody, EPH receptor A2 Antibody, Ephrin type-A receptor 2 Antibody, Epithelial cell kinase Antibody, ECK Antibody, Sek-2 Antibody, ARCC2 Antibody, Soluble EPHA2 variant 1 Antibody, CTPP1 Antibody
<b>Family / Subfamily:</b>	Protein Kinase / Ephrin Receptor
<b>Host</b>	EPHA2 antibody was produced in Rabbit
<b>Clonality:</b>	Polyclonal
<b>Immunogen Species:</b>	EPHA2 / EPH Receptor A2 antibody was raised against Human
<b>Antigen Type:</b>	Synthetic peptide
<b>Immunogen:</b>	EPHA2 / EPH Receptor A2 antibody was raised against synthetic peptide from human EPHA2.
<b>Specificity:</b>	A portion of amino acids 450-500 of human EphA2
<b>Epitope:</b>	aa450-500
<b>Reactivity:</b>	Human, Chimpanzee, Monkey, Mouse, Rat, Bovine, Dog, Horse
<b>Purification:</b>	Immunoaffinity purified
<b>Presentation:</b>	PBS, 0.2% gelatin, 0.05 % sodium azide.
<b>Recommended Storage:</b>	Short term 4°C, long term aliquot and store at -20°C, avoid freeze thaw cycles.
<b>Usage Summary:</b>	Immunohistochemistry: LS-B1794 was validated for use in immunohistochemistry on a panel of 21 formalin-fixed, paraffin-embedded (FFPE) human tissues after heat induced antigen retrieval in pH 6.0 citrate buffer. After incubation with the primary antibody, slides were incubated with biotinylated secondary antibody, followed by alkaline phosphatase-streptavidin and chromogen. The stained slides were evaluated by a pathologist to confirm staining specificity. The optimal working concentration for LS-B1794 was determined to be 10 ug/ml.
<b>Uses:</b>	IHC - Paraffin (10 µg/ml), Western blot (0.5 - 2 µg/ml) (Optimal dilution to be determined by the researcher)
<b>Size:</b>	50 µg
<b>Concentration:</b>	0.5 mg/ml

**Immunohistochemistry Image:**



Anti-EPHA2 antibody IHC of human pancreas. Immunohistochemistry of formalin-fixed, paraffin-embedded tissue after heat-induced antigen retrieval. Antibody LS-B1794 concentration 10 ug/ml.

**Western Blot Image:**



Western blot of human EphA2 in human ovary lysate in the? absence of immunizing peptide using antibody at 1 ug/ml.

<b>Requested From:</b>	Japan
Laboratory Reagent For In Vitro Research Use Only	
Not for resale without prior written consent from LifeSpan BioSciences, Inc.	
Created on 9/23/2014	
© 2014 LifeSpan BioSciences	