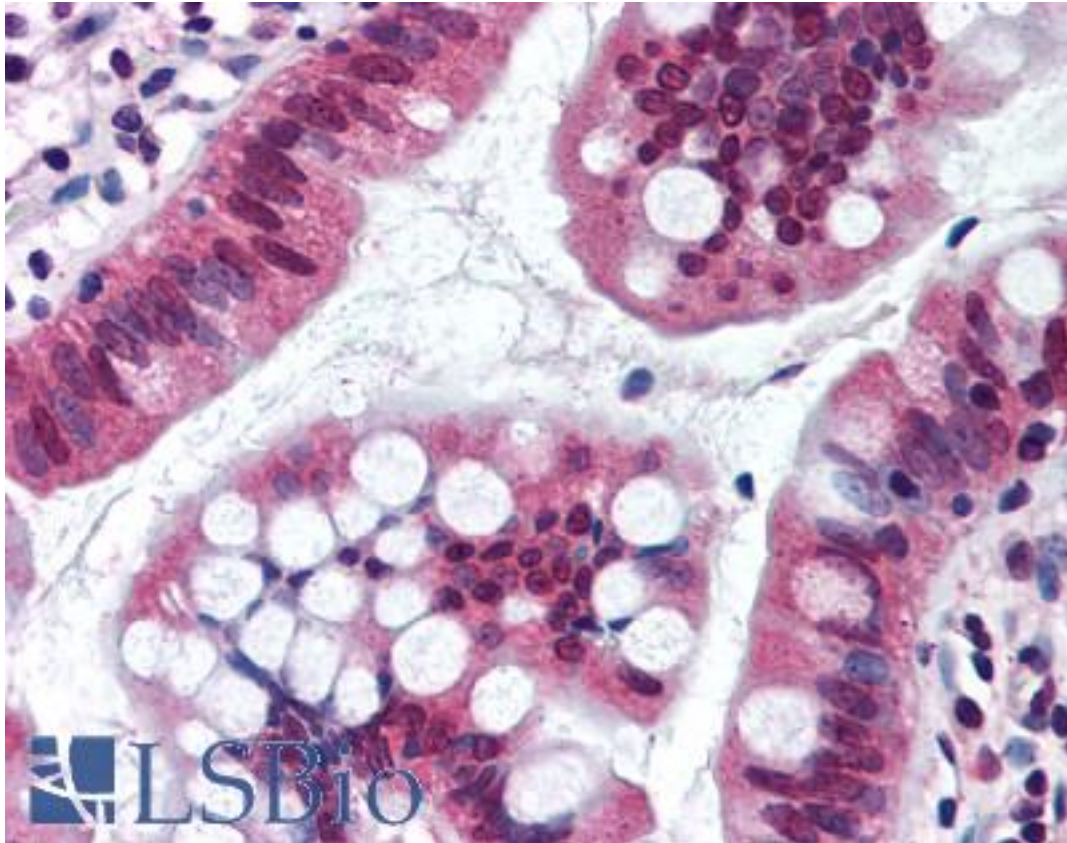


SRI / Sorcin Rabbit anti-Human Polyclonal (aa50-100) Antibody - LS-B1793 - LSBio

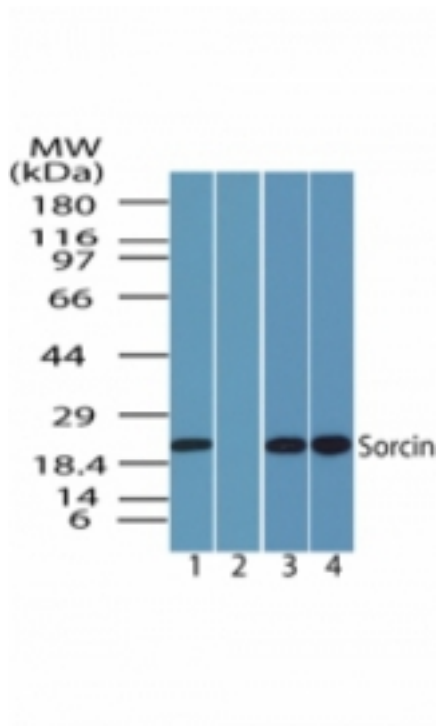
CatalogID:	LS-B1793
Validation:	This antibody replaces catalog number LS-C47347. It has been validated for use in the following assays: IHC.
Target:	sorcin (SRI)
Synonyms:	SRI Antibody, 22 kDa protein Antibody, CP22 Antibody, CP-22 Antibody, H_RG167B05.1 Antibody, SCN Antibody, V19 Antibody, Sorcin Antibody
Host	SRI antibody was produced in Rabbit
Clonality:	Polyclonal
Immunogen Species:	SRI / Sorcin antibody was raised against Human
Antigen Type:	Synthetic peptide
Immunogen:	SRI / Sorcin antibody was raised against synthetic peptide from human SRI.
Specificity:	A portion of amino acids 50-100 of human Sorcin
Epitope:	aa50-100
Reactivity:	Human, Chimpanzee, Monkey, Mouse, Rat, Bovine, Dog, Horse, Opossum, Chicken, Xenopus
Purification:	Immunoaffinity purified
Presentation:	PBS, 0.2% gelatin, 0.05% sodium azide.
Recommended Storage:	Short term 4°C, long term aliquot and store at -20°C, avoid freeze thaw cycles.
Usage Summary:	Immunohistochemistry: LS-B1793 was validated for use in immunohistochemistry on a panel of 21 formalin-fixed, paraffin-embedded (FFPE) human tissues after heat induced antigen retrieval in pH 6.0 citrate buffer. After incubation with the primary antibody, slides were incubated with biotinylated secondary antibody, followed by alkaline phosphatase-streptavidin and chromogen. The stained slides were evaluated by a pathologist to confirm staining specificity. The optimal working concentration for LS-B1793 was determined to be 10 ug/ml.
Uses:	IHC - Paraffin (10 µg/ml), Western blot (0.5 - 2 µg/ml) (Optimal dilution to be determined by the researcher)
Size:	50 µg
Concentration:	0.5 mg/ml

Immunohistochemistry Image:



Anti-SRI antibody IHC of human small intestine. Immunohistochemistry of formalin-fixed, paraffin-embedded tissue after heat-induced antigen retrieval. Antibody LS-B1793 concentration 10 ug/ml.

Western Blot Image:



Western blot of human Sorcin in human brain lysate in the 1) absence, 2) presence of immunizing peptide, 3) mouse brain and 4) rat brain using antibody at 1 ug/ml.

Requested From:

Japan

Laboratory Reagent For In Vitro Research Use Only

Not for resale without prior written consent from LifeSpan BioSciences, Inc.

Created on 9/23/2014

© 2014 LifeSpan BioSciences