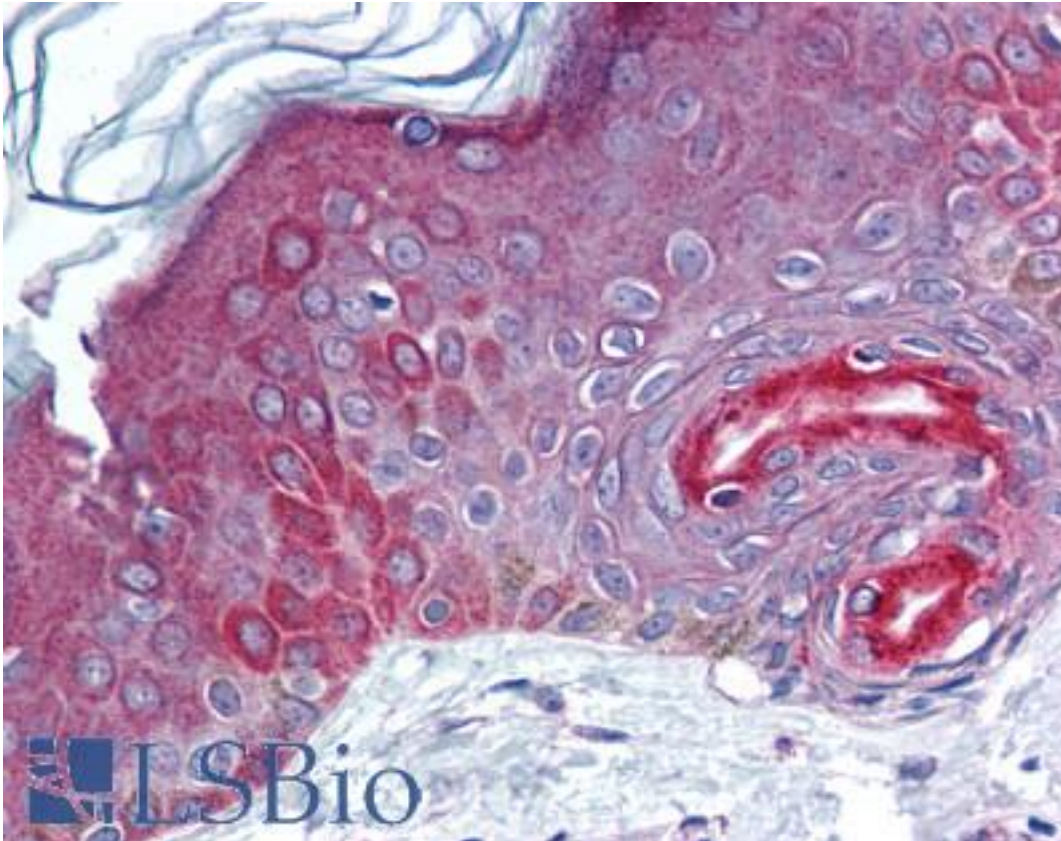


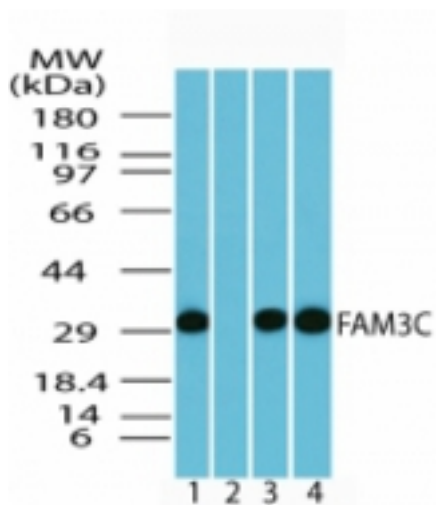
ILEI / FAM3C Rabbit anti-Human Polyclonal (aa40-80) Antibody - LS-B1791 - LSBio	
<b>CatalogID:</b>	LS-B1791
<b>Validation:</b>	This antibody replaces catalog number LS-C47344. It has been validated for use in the following assays: IHC.
<b>Target:</b>	family with sequence similarity 3, member C (FAM3C)
<b>Synonyms:</b>	FAM3C Antibody, GS3876 Antibody, GS3786 Antibody, Interleukin-like EMT inducer Antibody, Predicted osteoblast protein Antibody, ILEI Antibody, Protein FAM3C Antibody
<b>Host</b>	FAM3C antibody was produced in Rabbit
<b>Clonality:</b>	Polyclonal
<b>Immunogen Species:</b>	ILEI / FAM3C antibody was raised against Human
<b>Antigen Type:</b>	Synthetic peptide
<b>Immunogen:</b>	ILEI / FAM3C antibody was raised against synthetic peptide from human FAM3C.
<b>Specificity:</b>	A portion of amino acids 40-80 of human FAM3C
<b>Epitope:</b>	aa40-80
<b>Reactivity:</b>	Human, Chimpanzee, Monkey, Mouse, Rat, Bovine, Dog, Opossum, Chicken, Pufferfish
<b>Purification:</b>	Immunoaffinity purified
<b>Presentation:</b>	PBS, 0.05% BSA, 0.05% sodium azide.
<b>Recommended Storage:</b>	Short term 4°C, long term aliquot and store at -20°C, avoid freeze thaw cycles.
<b>Usage Summary:</b>	Immunohistochemistry: LS-B1791 was validated for use in immunohistochemistry on a panel of 21 formalin-fixed, paraffin-embedded (FFPE) human tissues after heat induced antigen retrieval in pH 6.0 citrate buffer. After incubation with the primary antibody, slides were incubated with biotinylated secondary antibody, followed by alkaline phosphatase-streptavidin and chromogen. The stained slides were evaluated by a pathologist to confirm staining specificity. The optimal working concentration for LS-B1791 was determined to be 5-10 ug/ml.
<b>Uses:</b>	IHC - Paraffin (5 - 10 µg/ml), Western blot (0.5 - 1 µg/ml) (Optimal dilution to be determined by the researcher)
<b>Size:</b>	50 µg
<b>Concentration:</b>	0.5 mg/ml

**Immunohistochemistry Image:**



Anti-FAM3C antibody IHC of human skin. Immunohistochemistry of formalin-fixed, paraffin-embedded tissue after heat-induced antigen retrieval. Antibody LS-B1791 concentration 10 ug/ml.

**Western Blot Image:**



Western blot of human FAM3C in human brain lysate (0.5 ug/ml) 1) absence, 2) presence of immunizing peptide, 3) mouse brain lysate (0.5 ug/ml), and 4) in rat brain lysate (0.5 ug/ml) using antibody

Laboratory Reagent For In Vitro Research Use Only

Not for resale without prior written consent from LifeSpan BioSciences, Inc.

Created on 9/23/2014

© 2014 LifeSpan BioSciences