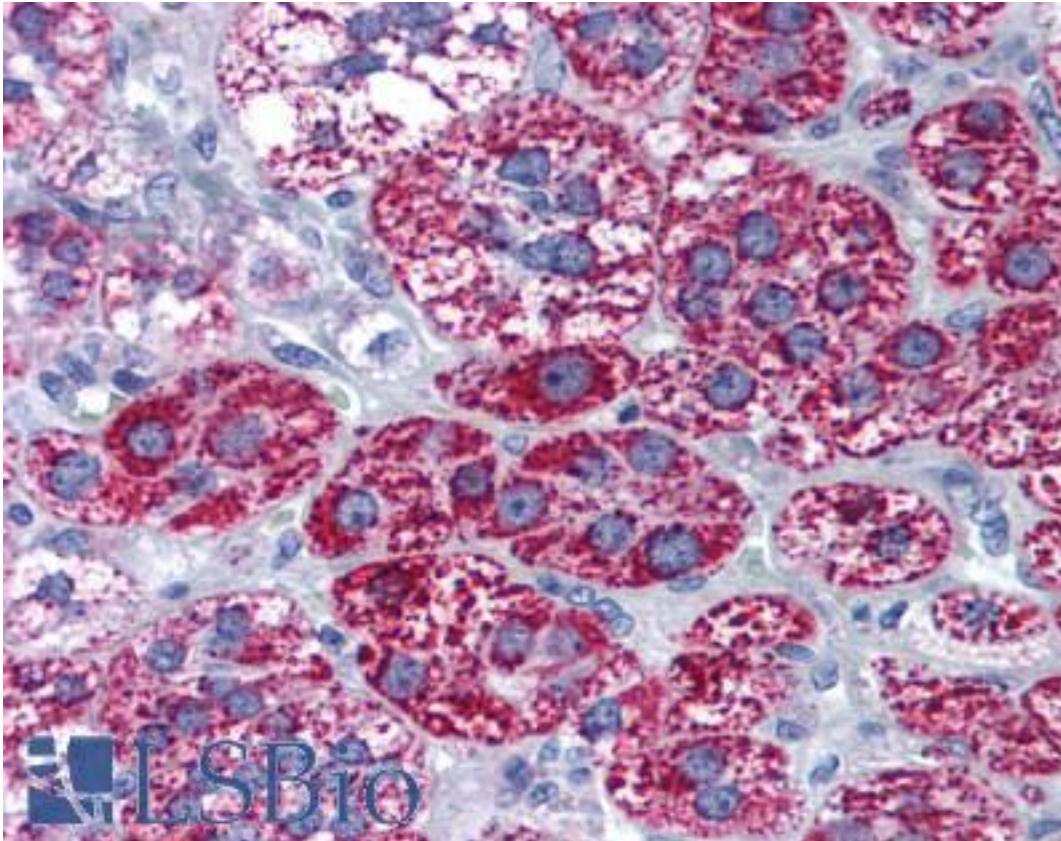


CYP1B1 Rabbit anti-Human Polyclonal (aa400-450) Antibody - LS-B1790 - LSBio

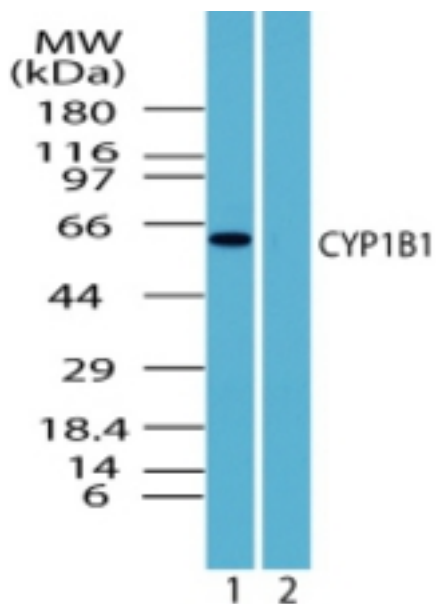
| | |
|-----------------------------|--|
| CatalogID: | LS-B1790 |
| Validation: | This antibody replaces catalog number LS-C47343. It has been validated for use in the following assays: IHC. |
| Target: | cytochrome P450, family 1, subfamily B, polypeptide 1 (CYP1B1) |
| Synonyms: | CYP1B1 Antibody, Aryl hydrocarbon hydroxylase Antibody, CP1B Antibody, Cytochrome P450 1B1 Antibody, CYP1B1 Antibody, GLC3A Antibody, p4501B1 Antibody |
| Family / Subfamily: | Cytochrome P450 / not assigned-Cytochrome P450 |
| Host | CYP1B1 antibody was produced in Rabbit |
| Clonality: | Polyclonal |
| Isotype: | IgG |
| Immunogen Species: | CYP1B1 antibody was raised against Human |
| Antigen Type: | Synthetic peptide |
| Immunogen: | CYP1B1 antibody was raised against synthetic peptide from human CYP1B1. |
| Specificity: | A portion of amino acids 400-450 of human CYP1B1 |
| Epitope: | aa400-450 |
| Reactivity: | Human, Chimpanzee, Monkey, Mouse, Rat, Bovine, Chicken |
| Purification: | Protein G purified |
| Presentation: | PBS, 0.2% gelatin, 0.05% sodium azide. |
| Recommended Storage: | Short term 4°C, long term aliquot and store at -20°C, avoid freeze thaw cycles. |
| Usage Summary: | Immunohistochemistry: LS-B1790 was validated for use in immunohistochemistry on a panel of 21 formalin-fixed, paraffin-embedded (FFPE) human tissues after heat induced antigen retrieval in pH 6.0 citrate buffer. After incubation with the primary antibody, slides were incubated with biotinylated secondary antibody, followed by alkaline phosphatase-streptavidin and chromogen. The stained slides were evaluated by a pathologist to confirm staining specificity. The optimal working concentration for LS-B1790 was determined to be 10 ug/ml. |
| Uses: | IHC - Paraffin (10 µg/ml), Western blot (0.5 - 2 µg/ml) (Optimal dilution to be determined by the researcher) |
| Size: | 50 µg |
| Concentration: | 0.5 mg/ml |

Immunohistochemistry Image:



Anti-CYP11B1 antibody IHC of human adrenal. Immunohistochemistry of formalin-fixed, paraffin-embedded tissue after heat-induced antigen retrieval. Antibody LS-B1790 concentration 10 ug/ml.

Western Blot Image:



Western blot of human CYP11B1 in human brain lysate in the 1) absence and 2) presence of immunizing peptide using antibody at 1 ug/ml.

| | |
|--|-------|
| Requested From: | Japan |
| Laboratory Reagent For In Vitro Research Use Only | |
| Not for resale without prior written consent from LifeSpan BioSciences, Inc. | |
| Created on 9/23/2014 | |
| © 2014 LifeSpan BioSciences | |