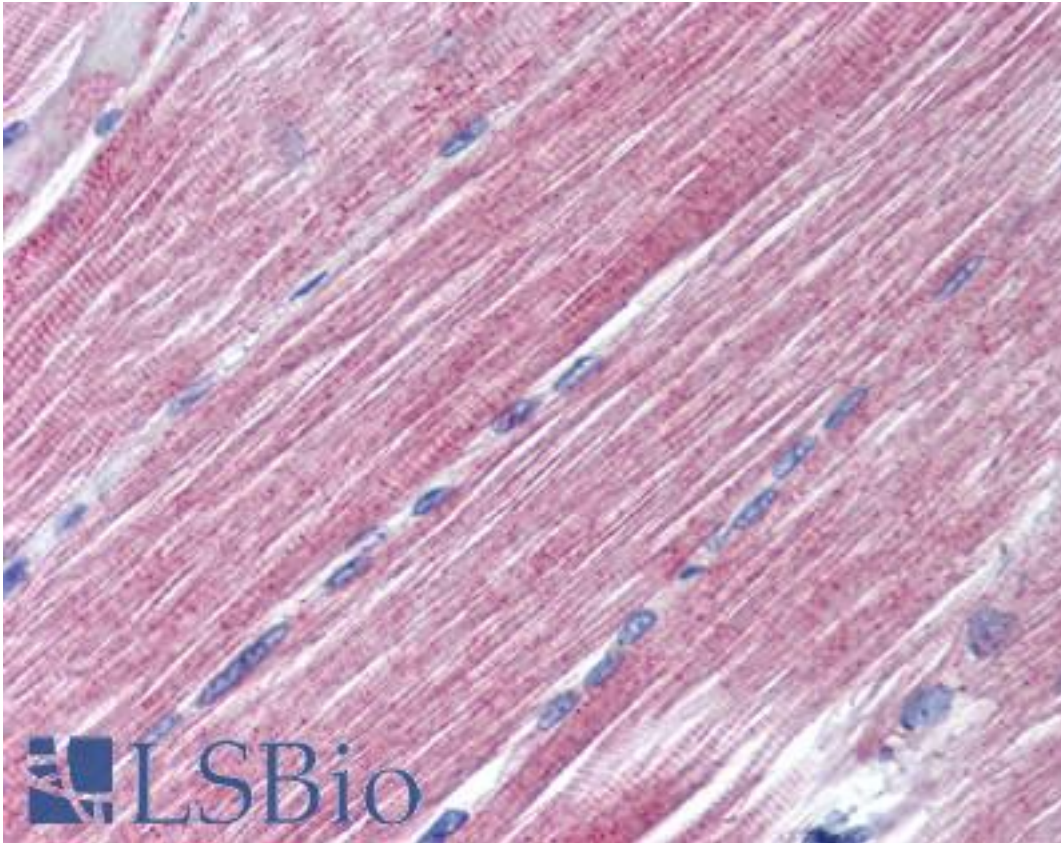


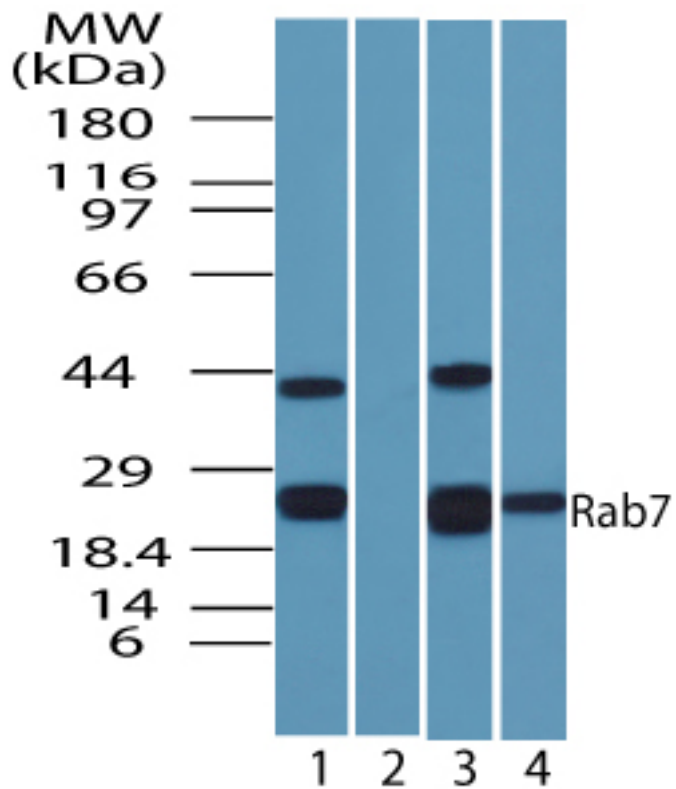
RAB7A / RAB7 Rabbit anti-Human Polyclonal (aa90-140) Antibody - LS-B1789 - LSBio	
CatalogID:	LS-B1789
Validation:	This antibody replaces catalog number LS-C47342. It has been validated for use in the following assays: IHC.
Target:	RAB7A, member RAS oncogene family
Synonyms:	RAB7A Antibody, CMT2B Antibody, PRO2706 Antibody, RAB7 Antibody, Ras-associated protein RAB7 Antibody, Ras-related protein Rab-7a Antibody, PSN Antibody
Host	RAB7A antibody was produced in Rabbit
Clonality:	Polyclonal
Immunogen Species:	RAB7A / RAB7 antibody was raised against Human
Antigen Type:	Synthetic peptide
Immunogen:	RAB7A / RAB7 antibody was raised against synthetic peptide from human RAB7A / RAB7.
Specificity:	A portion of amino acids 90-140 of human Rab7 protein
Epitope:	aa90-140
Reactivity:	Human, Chimpanzee, Monkey, Rat, Bovine, Dog, Chicken, Xenopus, Zebrafish
Purification:	Immunoaffinity purified
Presentation:	PBS, 0.05% BSA, 0.05% sodium azide.
Recommended Storage:	Short term 4°C, long term aliquot and store at -20°C, avoid freeze thaw cycles.
Usage Summary:	Immunohistochemistry: LS-B1789 was validated for use in immunohistochemistry on a panel of 21 formalin-fixed, paraffin-embedded (FFPE) human tissues after heat induced antigen retrieval in pH 6.0 citrate buffer. After incubation with the primary antibody, slides were incubated with biotinylated secondary antibody, followed by alkaline phosphatase-streptavidin and chromogen. The stained slides were evaluated by a pathologist to confirm staining specificity. The optimal working concentration for LS-B1789 was determined to be 10 ug/ml.
Uses:	IHC - Paraffin (10 µg/ml), Western blot (0.5 - 1 µg/ml) (Optimal dilution to be determined by the researcher)
Size:	50 µg
Concentration:	0.5 mg/ml

Immunohistochemistry Image:



Anti-RAB7 antibody IHC of human skeletal muscle. Immunohistochemistry of formalin-fixed, paraffin-embedded tissue after heat-induced antigen retrieval. Antibody LS-B1789 concentration 10 ug/ml.

Western Blot Image:



Western blot of human Rab7 in HeLa cell lysate in the 1) absence and 2) presence of immunizing peptide 3) 3T3 and 4) RAW using antibody at 0.25 ug/ml.

Requested From:

Japan

Laboratory Reagent For In Vitro Research Use Only

Not for resale without prior written consent from LifeSpan BioSciences, Inc.

Created on 9/23/2014

© 2014 LifeSpan BioSciences