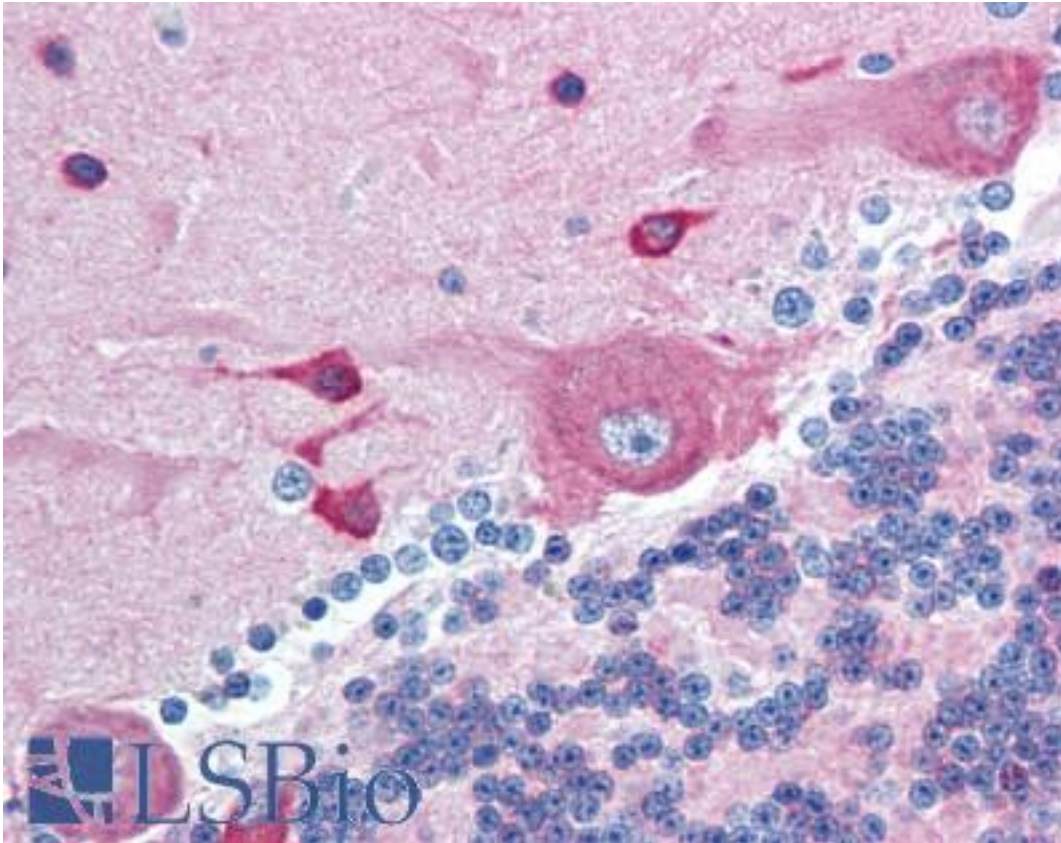


PACSIN2 Rabbit anti-Human Polyclonal (aa400-450) Antibody - LS-B1787 - LSBio

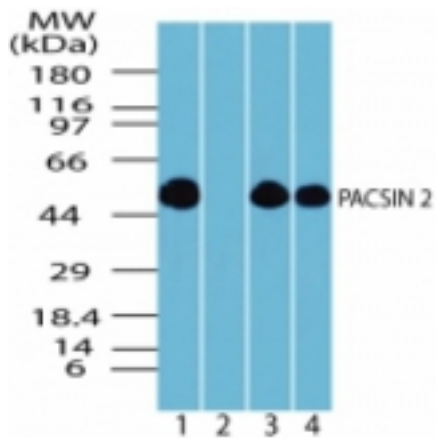
CatalogID:	LS-B1787
Validation:	This antibody replaces catalog number LS-C47310. It has been validated for use in the following assays: IHC.
Target:	protein kinase C and casein kinase substrate in neurons 2 (PACSIN2)
Synonyms:	PACSIN2 Antibody, SDPII Antibody, Syndapin II Antibody
Host	PACSIN2 antibody was produced in Rabbit
Clonality:	Polyclonal
Immunogen Species:	PACSIN2 antibody was raised against Human
Antigen Type:	Synthetic peptide
Immunogen:	PACSIN2 antibody was raised against synthetic peptide from human PACSIN2.
Specificity:	A portion of amino acids 400-450 of human PACSIN2
Epitope:	aa400-450
Reactivity:	Human, Chimpanzee, Mouse, Rat, Bovine, Dog, Chicken, Xenopus
Purification:	Immunoaffinity purified
Presentation:	PBS, 0.2% gelatin, 0.05% sodium azide.
Recommended Storage:	Short term 4°C, long term aliquot and store at -20°C, avoid freeze thaw cycles.
Usage Summary:	Immunohistochemistry: LS-B1787 was validated for use in immunohistochemistry on a panel of 21 formalin-fixed, paraffin-embedded (FFPE) human tissues after heat induced antigen retrieval in pH 6.0 citrate buffer. After incubation with the primary antibody, slides were incubated with biotinylated secondary antibody, followed by alkaline phosphatase-streptavidin and chromogen. The stained slides were evaluated by a pathologist to confirm staining specificity. The optimal working concentration for LS-B1787 was determined to be 10 ug/ml.
Uses:	IHC - Paraffin (10 µg/ml), Western blot (0.02 - 1 µg/ml) (Optimal dilution to be determined by the researcher)
Size:	50 µg
Concentration:	0.5 mg/ml

Immunohistochemistry Image:



Anti-PACSIN2 antibody IHC of human brain, cerebellum. Immunohistochemistry of formalin-fixed, paraffin-embedded tissue after heat-induced antigen retrieval. Antibody LS-B1787 concentration 10 ug/ml.

Western Blot Image:



Western blot of PACSIN2 in human brain lysate in the 1) absence and 2) presence of immunizing peptide, 3) mouse brain lysate and 4) rat brain lysate using antibody at 0.05 ug/ml.

Requested From:

Japan

Laboratory Reagent For In Vitro Research Use Only

Not for resale without prior written consent from LifeSpan BioSciences, Inc.

Created on 9/23/2014

© 2014 LifeSpan BioSciences