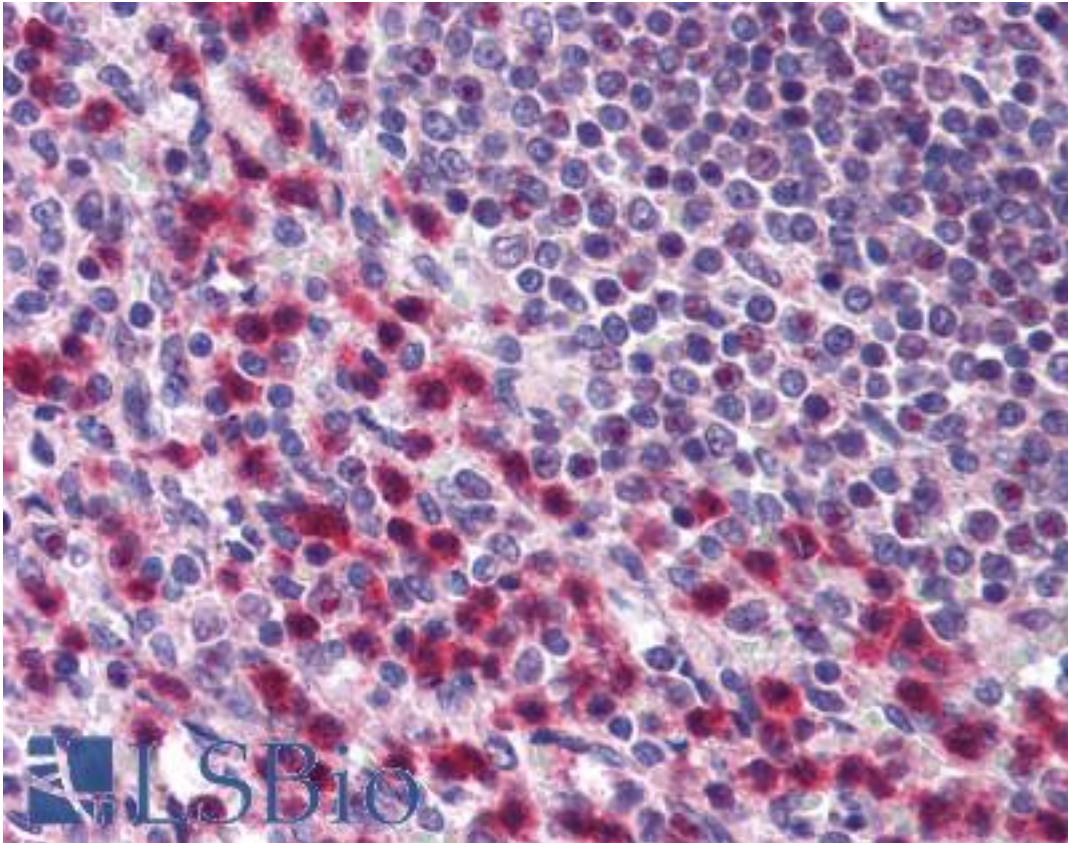


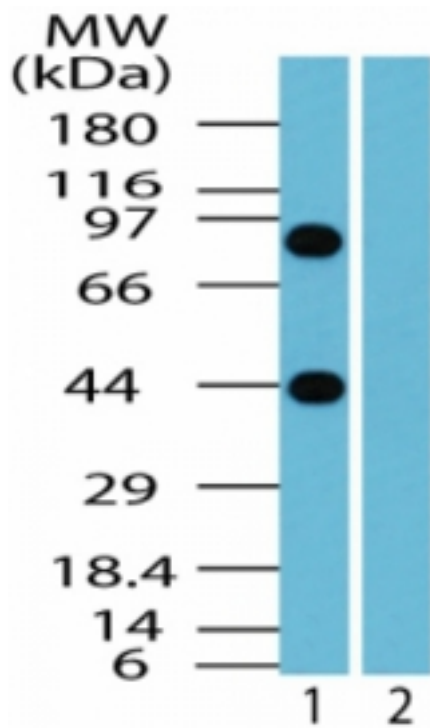
BTF / BCLAF1 Rabbit anti-Human Polyclonal (aa700-750) Antibody - LS-B1783 - LSBio	
CatalogID:	LS-B1783
Validation:	This antibody replaces catalog number LS-C47296. It has been validated for use in the following assays: IHC.
Target:	BCL2-associated transcription factor 1 (BCLAF1)
Synonyms:	BCLAF1 Antibody, BK211L9.1 Antibody, BTF Antibody, KIAA0164 Antibody
Family / Subfamily:	Apoptosis
Host	BCLAF1 antibody was produced in Rabbit
Clonality:	Polyclonal
Immunogen Species:	BTF / BCLAF1 antibody was raised against Human
Antigen Type:	Synthetic peptide
Immunogen:	BTF / BCLAF1 antibody was raised against synthetic peptide from human BCLAF1 / BTF.
Specificity:	A portion of amino acids 700-750 of human BCLAF1
Epitope:	aa700-750
Reactivity:	Human, Chimpanzee, Mouse, Dog, Chicken, Mosquito
Purification:	Immunoaffinity purified
Presentation:	PBS, 0.2% gelatin, 0.05% sodium azide.
Recommended Storage:	Short term 4°C, long term aliquot and store at -20°C, avoid freeze thaw cycles.
Usage Summary:	Immunohistochemistry: LS-B1783 was validated for use in immunohistochemistry on a panel of 21 formalin-fixed, paraffin-embedded (FFPE) human tissues after heat induced antigen retrieval in pH 6.0 citrate buffer. After incubation with the primary antibody, slides were incubated with biotinylated secondary antibody, followed by alkaline phosphatase-streptavidin and chromogen. The stained slides were evaluated by a pathologist to confirm staining specificity. The optimal working concentration for LS-B1783 was determined to be 10 ug/ml.
Uses:	IHC - Paraffin (10 µg/ml), Western blot (0.5 - 2 µg/ml) (Optimal dilution to be determined by the researcher)
Size:	50 µg
Concentration:	0.5 mg/ml

Immunohistochemistry Image:



Anti-BCLAF1 / BTF antibody IHC of human spleen. Immunohistochemistry of formalin-fixed, paraffin-embedded tissue after heat-induced antigen retrieval. Antibody LS-B1783 concentration 10 ug/ml.

Western Blot Image:



Western blot of human BCLAF1 in Jurkat cell lysate in the 1) absence and 2) presence of immunizing peptide using antibody at 0.5 ug/ml.

Requested From:

Japan

Laboratory Reagent For In Vitro Research Use Only

Not for resale without prior written consent from LifeSpan BioSciences, Inc.

Created on 9/23/2014

© 2014 LifeSpan BioSciences