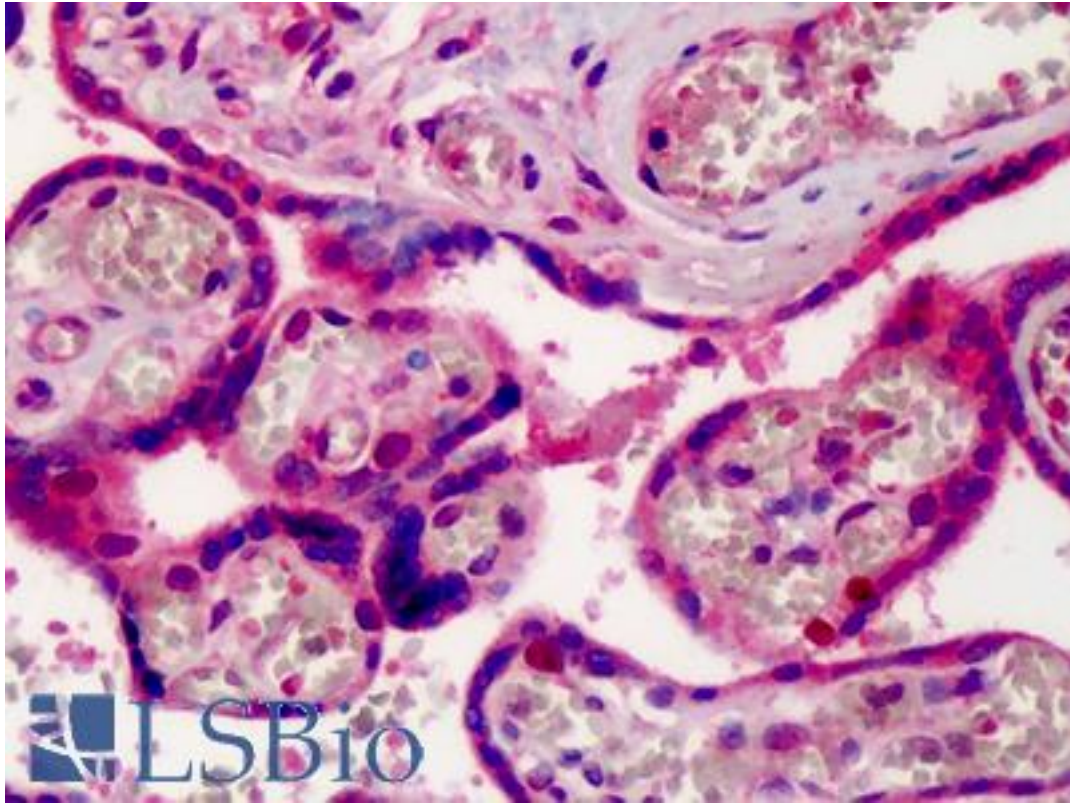


XPO1 / CRM1 Rabbit anti-Human Polyclonal (aa390-408) Antibody - LS-B1776 - LSBio

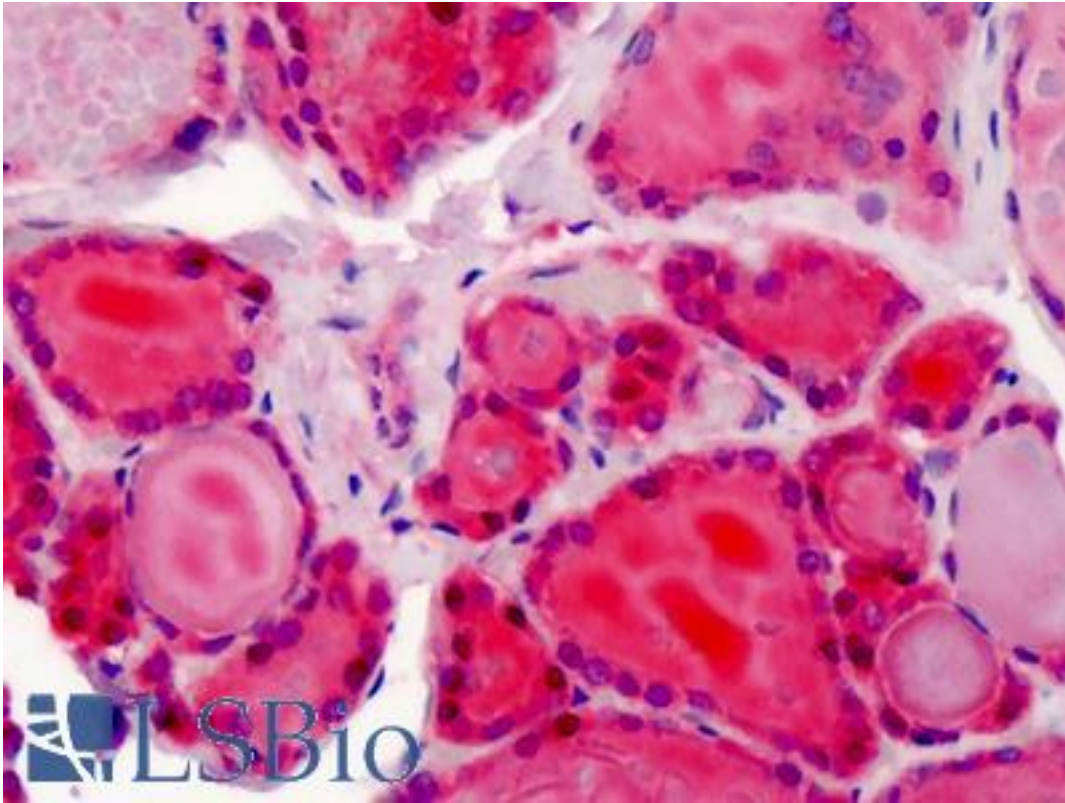
CatalogID:	LS-B1776
Validation:	This antibody replaces catalog number LS-C47283. It has been validated for use in the following assays: IHC.
Target:	exportin 1 (CRM1 homolog, yeast) (XPO1)
Synonyms:	XPO1 Antibody, CRM1, yeast, homolog Antibody, Exp1 Antibody, Exportin-1 Antibody, CRM1 Antibody
Host	XPO1 antibody was produced in Rabbit
Clonality:	Polyclonal
Isotype:	IgG
Immunogen Species:	XPO1 / CRM1 antibody was raised against Human
Immunogen:	XPO1 / CRM1 antibody was raised against amino acids 390-408 (ASPLLSGSQHFVPPRRQL) of human Exportin-1 protein were used as the immunogen. Percent identity by BLAST analysis: Human, Gorilla, Gibbon, Monkey, Marmoset, Elephant, Panda, Bovine, Dog, Bat, Horse, Chicken, Platypus, Xenopus (100%); Mouse, Rat, Hamster, Rabbit, Opossum, Zebrafish (95%); Stickleback, Pufferfish (89%).
Specificity:	Amino acids 390-408 (ASPLLSGSQHFVPPRRQL) of human Exportin-1 protein
Epitope:	aa390-408
Reactivity:	Human, Gorilla, Gibbon, Monkey, Bat, Bovine, Dog, Horse, Chicken, Xenopus
Predicted Reactivity:	Mouse, Rat, Hamster, Rabbit, Zebrafish
Purification:	Protein G purified
Presentation:	PBS, 0.2% gelatin, 0.05% sodium azide.
Recommended Storage:	Short term 4°C, long term aliquot and store at -20°C, avoid freeze thaw cycles.
Usage Summary:	Immunohistochemistry: LS-B1776 was validated for use in immunohistochemistry on a panel of 21 formalin-fixed, paraffin-embedded (FFPE) human tissues after heat induced antigen retrieval in pH 6.0 citrate buffer. After incubation with the primary antibody, slides were incubated with biotinylated secondary antibody, followed by alkaline phosphatase-streptavidin and chromogen. The stained slides were evaluated by a pathologist to confirm staining specificity. The optimal working concentration for LS-B1776 was determined to be 10 ug/ml.
Uses:	IHC - Paraffin (10 µg/ml), Western blot (1 - 3 µg/ml) (Optimal dilution to be determined by the researcher)
Size:	50 µg
Concentration:	0.5 mg/ml

Immunohistochemistry Image:



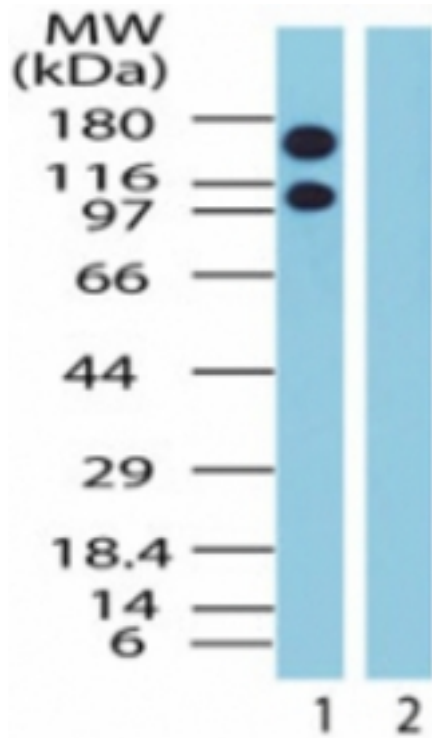
Anti-CRM1 antibody IHC of human placenta. Immunohistochemistry of formalin-fixed, paraffin-embedded tissue after heat-induced antigen retrieval. Antibody LS-B1776 concentration 10 ug/ml.

Immunohistochemistry Image:



Anti-CRM1 antibody IHC of human thyroid. Immunohistochemistry of formalin-fixed, paraffin-embedded tissue after heat-induced antigen retrieval. Antibody LS-B1776 concentration 10 ug/ml.

Western Blot Image:



Western blot of Exportin-1 in Jurkat cell lysate in the 1) absence and 2) presence of immunizing peptide using antibody at 1.5 ug/ml.

Requested From:

Japan

Laboratory Reagent For In Vitro Research Use Only

Not for resale without prior written consent from LifeSpan BioSciences, Inc.

Created on 9/23/2014

© 2014 LifeSpan BioSciences