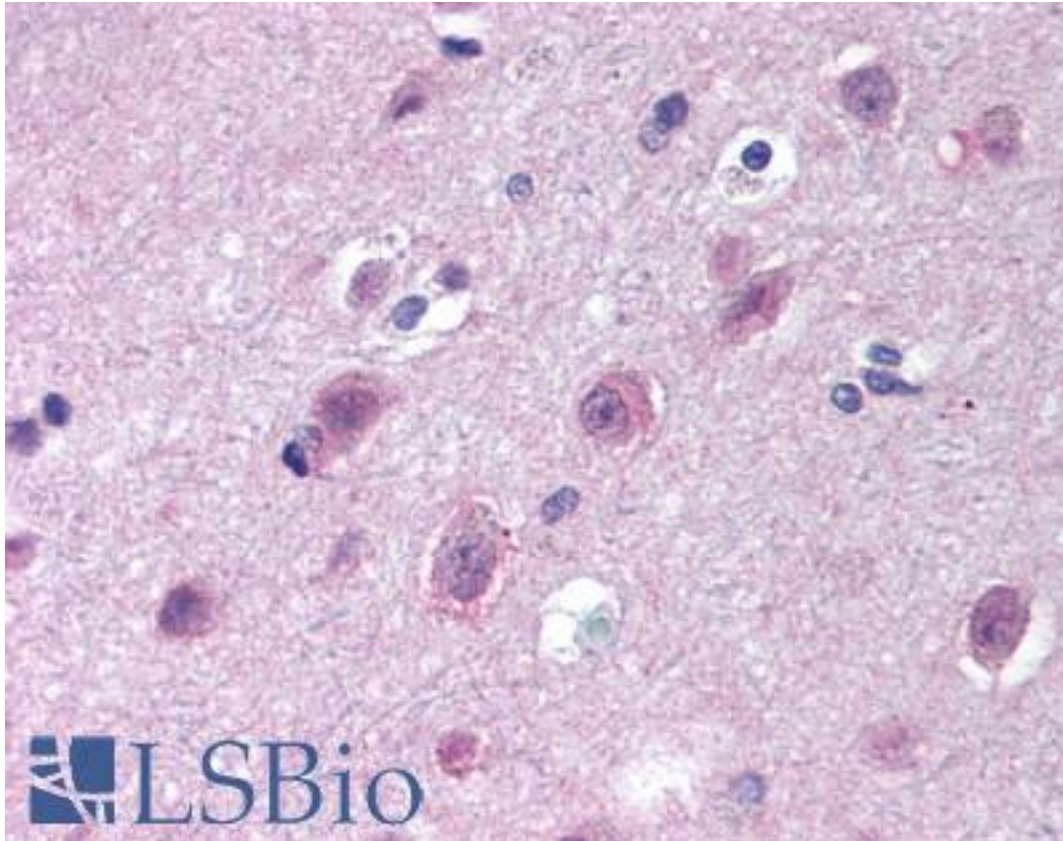


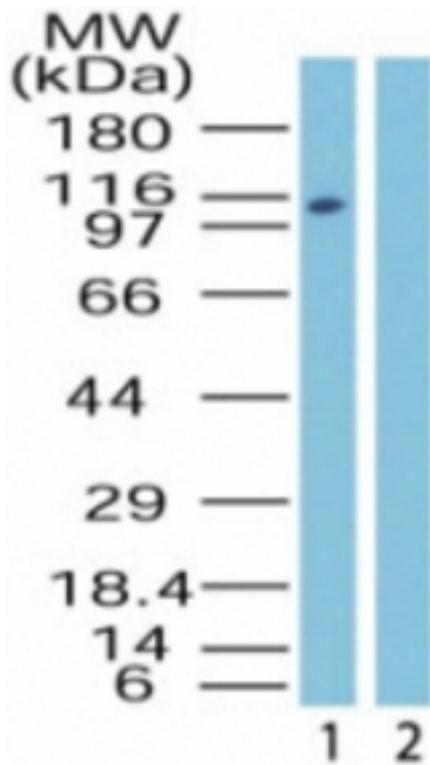
IPO9 / Importin 9 Rabbit anti-Human Polyclonal (aa950-1000) Antibody - LS-B1772 - LSBio	
CatalogID:	LS-B1772
Validation:	This antibody replaces catalog number LS-C47279. It has been validated for use in the following assays: IHC.
Target:	importin 9 (IPO9)
Synonyms:	IPO9 Antibody, Importin-9 Antibody, Importin 9 Antibody, KIAA1192 Antibody, Ran-binding protein 9 Antibody, Imp9 Antibody
Host	IPO9 antibody was produced in Rabbit
Clonality:	Polyclonal
Isotype:	IgG
Immunogen Species:	IPO9 / Importin 9 antibody was raised against Human
Antigen Type:	Synthetic peptide
Immunogen:	IPO9 / Importin 9 antibody was raised against synthetic peptide from human IPO9 / Importin 9.
Specificity:	A portion of amino acids 950-1000 of human Importin-9
Epitope:	aa950-1000
Reactivity:	Human, Chimpanzee, Monkey, Mouse, Rat, Bovine, Chicken
Purification:	Protein G purified
Presentation:	PBS, 0.2% gelatin, 0.05% sodium azide.
Recommended Storage:	Short term 4°C, long term aliquot and store at -20°C, avoid freeze thaw cycles.
Usage Summary:	Immunohistochemistry: LS-B1772 was validated for use in immunohistochemistry on a panel of 21 formalin-fixed, paraffin-embedded (FFPE) human tissues after heat induced antigen retrieval in pH 6.0 citrate buffer. After incubation with the primary antibody, slides were incubated with biotinylated secondary antibody, followed by alkaline phosphatase-streptavidin and chromogen. The stained slides were evaluated by a pathologist to confirm staining specificity. The optimal working concentration for LS-B1772 was determined to be 10 ug/ml.
Uses:	IHC - Paraffin (10 µg/ml), Western blot (0.5 - 2 µg/ml) (Optimal dilution to be determined by the researcher)
Size:	50 µg
Concentration:	0.5 mg/ml

Immunohistochemistry Image:



Anti-IPO9 / Importin 9 antibody IHC of human brain, cortex. Immunohistochemistry of formalin-fixed, paraffin-embedded tissue after heat-induced antigen retrieval. Antibody LS-B1772 concentration 10 ug/ml.

Western Blot Image:



Western blot of Importin-9 in HeLa lysate in the 1) absence and 2) presence of immunizing peptide using antibody at 0.5 ug/ml.

Requested From:

Japan

Laboratory Reagent For In Vitro Research Use Only

Not for resale without prior written consent from LifeSpan BioSciences, Inc.

Created on 9/23/2014

© 2014 LifeSpan BioSciences