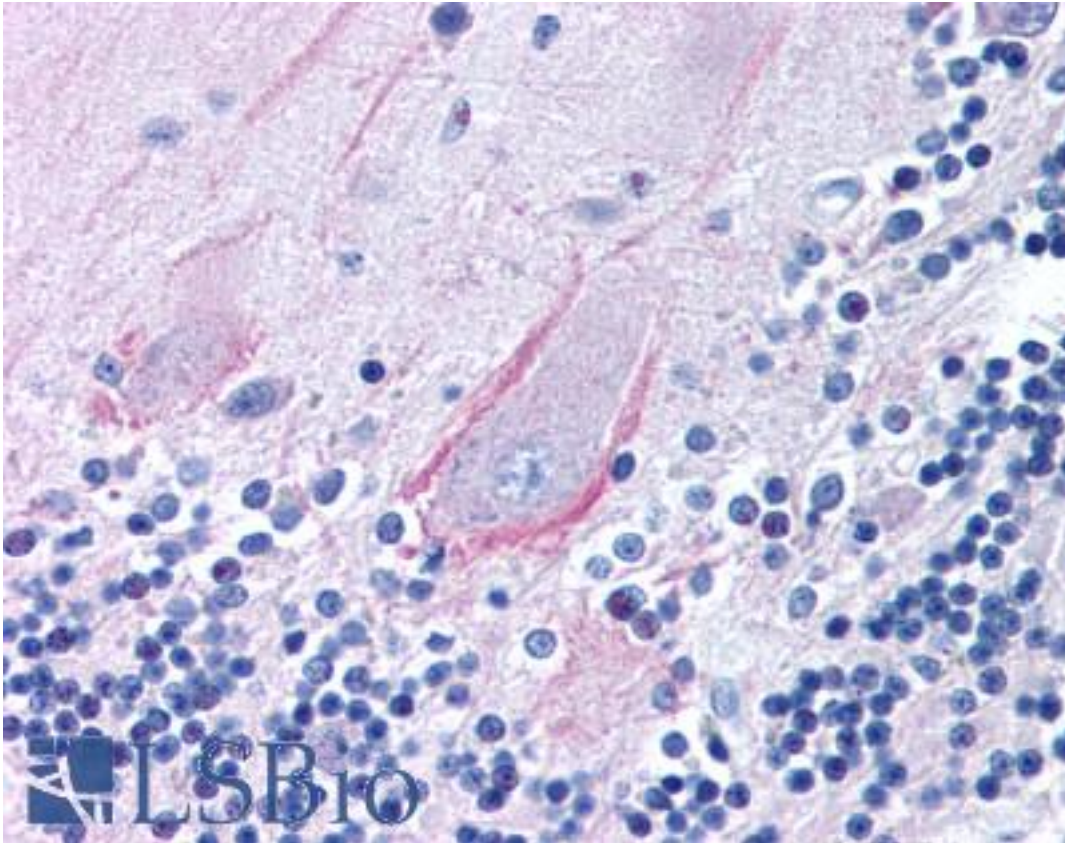


TRPA1 Rabbit anti-Human Polyclonal (aa1-100) Antibody - LS-B177 - LSBio	
<b>CatalogID:</b>	LS-B177
<b>Validation:</b>	This antibody replaces catalog number LS-C19333. It has been validated for use in the following assays: IHC.
<b>Target:</b>	transient receptor potential cation channel, subfamily A, member 1 (TRPA1)
<b>Synonyms:</b>	TRPA1 Antibody, ANKTM1 Antibody, TRPA-1 Antibody
<b>Family / Subfamily:</b>	Ion Channel / Calcium channel - TRP
<b>Host</b>	TRPA1 antibody was produced in Rabbit
<b>Clonality:</b>	Polyclonal
<b>Immunogen Species:</b>	TRPA1 antibody was raised against Human
<b>Antigen Type:</b>	Synthetic peptide
<b>Immunogen:</b>	TRPA1 antibody was raised against a synthetic peptide made to a region within the N-terminus (residues 1-100) of the human TRPA1 protein. [Swiss-Prot# O75762]
<b>Specificity:</b>	TRPA1.
<b>Epitope:</b>	aa1-100
<b>Reactivity:</b>	Human
<b>Purification:</b>	Immunoaffinity purified
<b>Presentation:</b>	Tris-glycine buffer, 150 mM sodium chloride, 0.05% sodium azide.
<b>Recommended Storage:</b>	Long term: -20°C; Short term: +4°C; Avoid freeze-thaw cycles.
<b>Usage Summary:</b>	Immunohistochemistry: LS-B177 was validated for use in immunohistochemistry on a panel of 21 formalin-fixed, paraffin-embedded (FFPE) human tissues after heat induced antigen retrieval in pH 6.0 citrate buffer. After incubation with the primary antibody, slides were incubated with biotinylated secondary antibody, followed by alkaline phosphatase-streptavidin and chromogen. The stained slides were evaluated by a pathologist to confirm staining specificity. The optimal working concentration for LS-B177 was determined to be 5 ug/ml.
<b>Uses:</b>	IHC - Paraffin (5 µg/ml), Western blot (2 µg/ml) (Optimal dilution to be determined by the researcher)
<b>Size:</b>	100 µl
<b>Concentration:</b>	1 mg/ml

**Immunohistochemistry Image:**



TRPA1 antibody (5 ug/ml) was used in IHC to stain formalin-fixed, paraffin-embedded human brain, cerebellum, followed by biotinylated goat anti-rabbit IgG secondary antibody, alkaline phosphatase-streptavidin and chromogen.

**Requested From:**

Japan

Laboratory Reagent For In Vitro Research Use Only

Not for resale without prior written consent from LifeSpan BioSciences, Inc.

Created on 9/23/2014

© 2014 LifeSpan BioSciences