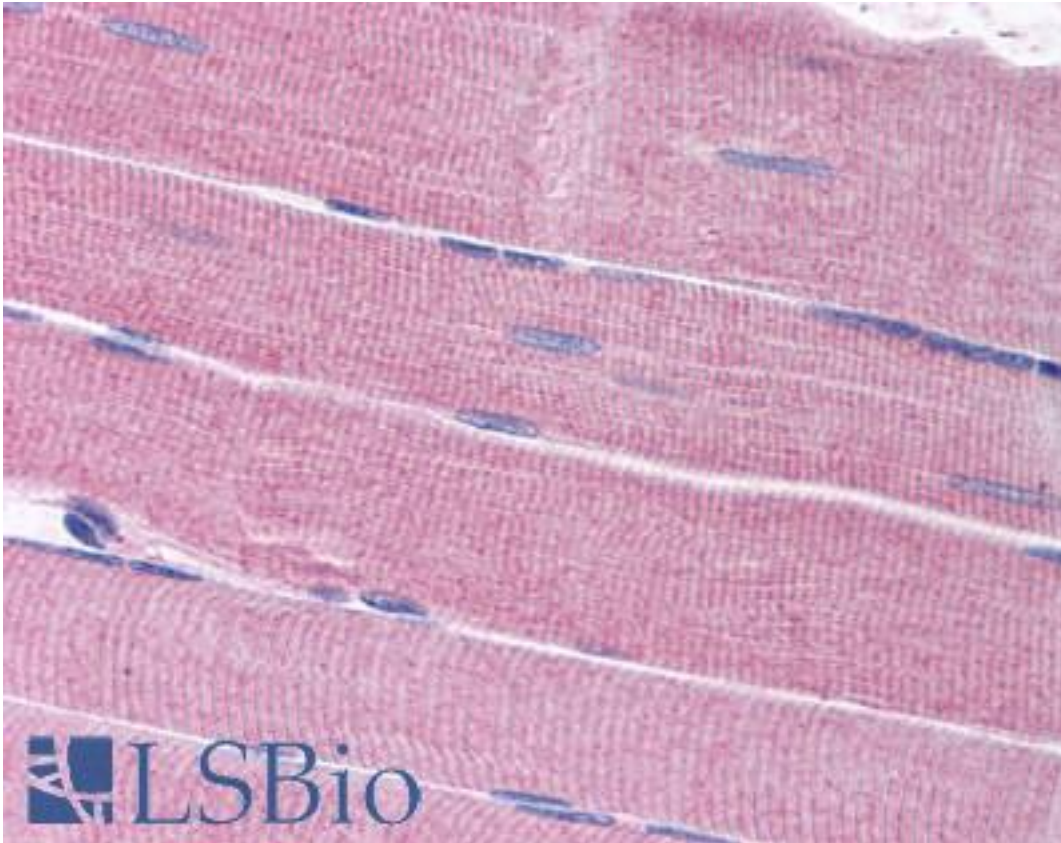


SORBS1 / Ponsin Goat anti-Human Polyclonal (C-Terminus) Antibody - LS-B1762 - LSBio	
CatalogID:	LS-B1762
Validation:	This antibody replaces catalog number LS-C47543. It has been validated for use in the following assays: IHC.
Target:	sorbin and SH3 domain containing 1 (SORBS1)
Synonyms:	SORBS1 Antibody, C-Cbl associated protein Antibody, C-Cbl-associated protein Antibody, CAP Antibody, FLAF2 Antibody, KIAA0894 Antibody, KIAA1296 Antibody, R85FL Antibody, SH3 domain protein 5 Antibody, SH3-domain protein 5 (ponsin) Antibody, SH3P12 Antibody, SORB1 Antibody, Fas-ligand associated factor 2 Antibody, Ponsin Antibody, SH3D5 Antibody
Host	SORBS1 antibody was produced in Goat
Clonality:	Polyclonal
Immunogen Species:	SORBS1 / Ponsin antibody was raised against Human
Antigen Type:	Synthetic peptide
Immunogen:	SORBS1 / Ponsin antibody was raised against synthetic peptide C-GTFPGNYVKPLYL from the C-terminus of human SORBS1 (NP_006425.2; NP_056200.1; NP_001030126.1; NP_001030127.1; NP_001030128.1; NP_079267.1; NP_001030129.1). Percent identity by BLAST analysis: Human, Gorilla, Orangutan, Gibbon, Monkey, Marmoset, Mouse, Rat, Dog, Bat, Hamster, Elephant, Panda, Horse, Opossum, Platypus (100%); Pig, Turkey, Chicken (92%); Zebrafish (85%).
Specificity:	Human SORBS1. This antibody is expected to recognize all seven reported isoforms (NP_006425.2, NP_056200.1, NP_001030126.1, NP_001030127.1, NP_001030128.1, NP_079267.1 and NP_001030129.1).
Epitope:	C-Terminus
Reactivity:	Human, Gorilla, Orangutan, Gibbon, Monkey, Mouse, Rat, Bat, Dog, Hamster, Horse
Predicted Reactivity:	Pig, Chicken
Purification:	Immunoaffinity purified
Presentation:	Tris-buffered saline, pH 7.3, 0.5% BSA, 0.02% sodium azide
Recommended Storage:	Store at -20°C. Minimize freezing and thawing.
Usage Summary:	Immunohistochemistry: LS-B1762 was validated for use in immunohistochemistry on a panel of 21 formalin-fixed, paraffin-embedded (FFPE) human tissues after heat induced antigen retrieval in pH 6.0 citrate buffer. After incubation with the primary antibody, slides were incubated with biotinylated secondary antibody, followed by alkaline phosphatase-streptavidin and chromogen. The stained slides were evaluated by a pathologist to confirm staining specificity. The optimal working concentration for LS-B1762 was determined to be 2.5 µg/ml.
Uses:	IHC - Paraffin (2.5 µg/ml), ELISA (1:16000) (Optimal dilution to be determined by the researcher)
Size:	50 µg
Concentration:	0.5 mg/ml

Immunohistochemistry Image:



Anti-SORBS1 antibody IHC of human skeletal muscle. Immunohistochemistry of formalin-fixed, paraffin-embedded tissue after heat-induced antigen retrieval. Antibody LS-B1762 concentration 5 ug/ml.

Requested From:

Japan

Laboratory Reagent For In Vitro Research Use Only

Not for resale without prior written consent from LifeSpan BioSciences, Inc.

Created on 9/23/2014

© 2014 LifeSpan BioSciences