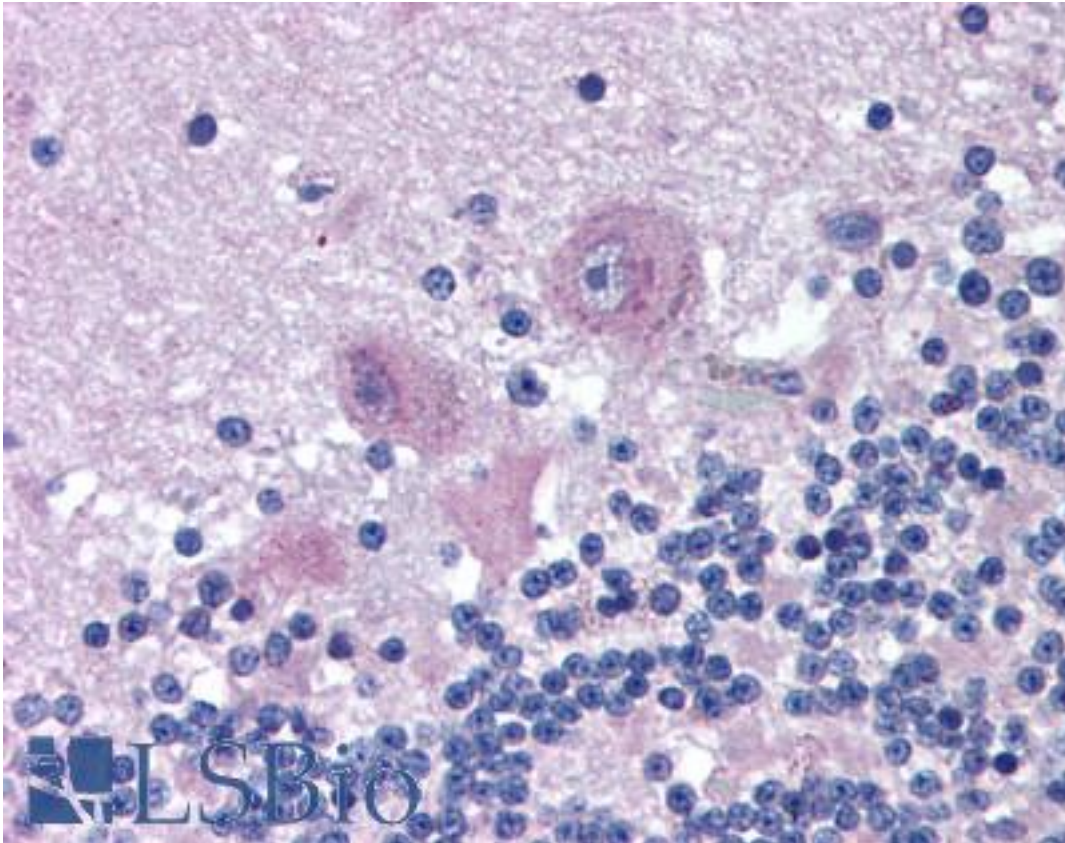


ARHGAP33 / SNX26 Goat anti-Human Polyclonal (C-Terminus) Antibody - LS-B1760 - LSBio	
CatalogID:	LS-B1760
Validation:	This antibody replaces catalog number LS-C47550. It has been validated for use in the following assays: IHC.
Target:	Rho GTPase activating protein 33 (ARHGAP33)
Synonyms:	ARHGAP33 Antibody, SNX26 Antibody, Sorting nexin 26 Antibody, TCGAP Antibody, Sorting nexin-26 Antibody, NOMA-GAP Antibody
Host	ARHGAP33 antibody was produced in Goat
Clonality:	Polyclonal
Immunogen Species:	ARHGAP33 / SNX26 antibody was raised against Human
Antigen Type:	Synthetic peptide
Immunogen:	ARHGAP33 / SNX26 antibody was raised against synthetic peptide SWSLHSEGQTRSYC from the C-terminus of human ARHGAP33 / SNX26 (NP_443180.2). Percent identity by BLAST analysis: Human, Gorilla, Gibbon, Monkey, Marmoset, Mouse, Dog, Panda, Horse (100%); Rat, Bat, Pig (93%).
Specificity:	Human ARHGAP33 / SNX26.
Epitope:	C-Terminus
Reactivity:	Human, Gorilla, Gibbon, Monkey, Mouse, Dog, Horse
Predicted Reactivity:	Rat, Bat, Pig
Purification:	Immunoaffinity purified
Presentation:	Tris-buffered saline, pH 7.3, 0.5% BSA, 0.02% sodium azide
Recommended Storage:	Store at -20°C. Minimize freezing and thawing.
Usage Summary:	Immunohistochemistry: LS-B1760 was validated for use in immunohistochemistry on a panel of 21 formalin-fixed, paraffin-embedded (FFPE) human tissues after heat induced antigen retrieval in pH 6.0 citrate buffer. After incubation with the primary antibody, slides were incubated with biotinylated secondary antibody, followed by alkaline phosphatase-streptavidin and chromogen. The stained slides were evaluated by a pathologist to confirm staining specificity. The optimal working concentration for LS-B1760 was determined to be 2.5 ug/ml.
Uses:	IHC - Paraffin (2.5 µg/ml), ELISA (1:8000) (Optimal dilution to be determined by the researcher)
Size:	50 µg
Concentration:	0.5 mg/ml

Immunohistochemistry Image:



Anti-ARHGAP33 / SNX26 antibody IHC of human brain, cerebellum. Immunohistochemistry of formalin-fixed, paraffin-embedded tissue after heat-induced antigen retrieval. Antibody LS-B1760 concentration 5 ug/ml.

Requested From:

Japan

Laboratory Reagent For In Vitro Research Use Only

Not for resale without prior written consent from LifeSpan BioSciences, Inc.

Created on 9/23/2014

© 2014 LifeSpan BioSciences