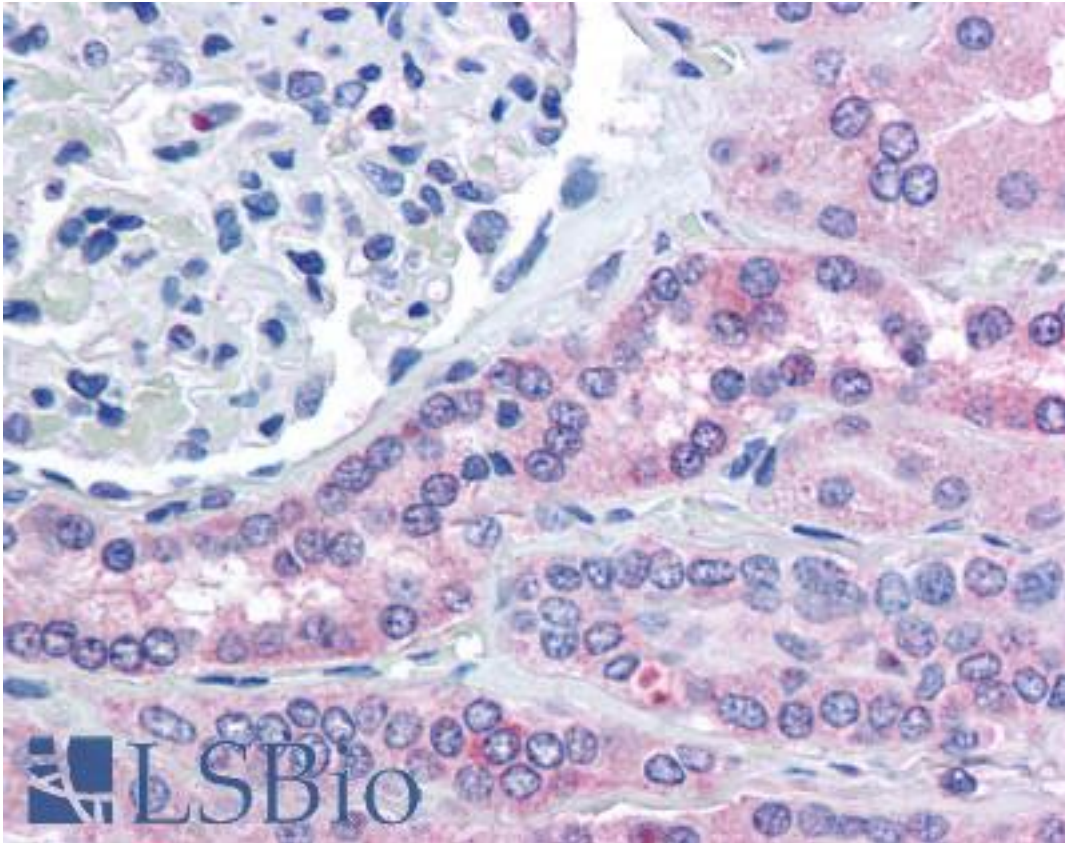


RHPN2 Goat anti-Human Polyclonal (Internal) Antibody - LS-B1756 - LSBio

| | |
|------------------------------|---|
| CatalogID: | LS-B1756 |
| Validation: | This antibody replaces catalog number LS-C47562. It has been validated for use in the following assays: IHC. |
| Target: | rhophilin, Rho GTPase binding protein 2 (RHPN2) |
| Synonyms: | RHPN2 Antibody, 76 kDa RhoB effector protein Antibody, GTP-Rho-binding protein 2 Antibody, Rhophilin-2 Antibody, p76RBE Antibody, RHOBP Antibody, Rhophilin 2 Antibody |
| Host | RHPN2 antibody was produced in Goat |
| Clonality: | Polyclonal |
| Immunogen Species: | RHPN2 antibody was raised against Human |
| Antigen Type: | Synthetic peptide |
| Immunogen: | RHPN2 antibody was raised against synthetic peptide C-TNKNRQKSAST from an internal region of human RHPN2 (NP_149094.3). Percent identity by BLAST analysis: Human, Gorilla, Marmoset, Bat, Bovine, Elephant, Panda, Rabbit, Opossum, Platypus (100%); Mouse, Rat, Hamster, Horse (91%); Dog (82%). |
| Specificity: | Human RHPN2. |
| Epitope: | Internal |
| Reactivity: | Human, Gorilla, Monkey, Bat, Bovine, Rabbit |
| Predicted Reactivity: | Mouse, Rat, Hamster, Horse |
| Purification: | Immunoaffinity purified |
| Presentation: | Tris-buffered saline, pH 7.3, 0.5% BSA, 0.02% sodium azide |
| Recommended Storage: | Store at -20°C. Minimize freezing and thawing. |
| Usage Summary: | Immunohistochemistry: LS-B1756 was validated for use in immunohistochemistry on a panel of 21 formalin-fixed, paraffin-embedded (FFPE) human tissues after heat induced antigen retrieval in pH 6.0 citrate buffer. After incubation with the primary antibody, slides were incubated with biotinylated secondary antibody, followed by alkaline phosphatase-streptavidin and chromogen. The stained slides were evaluated by a pathologist to confirm staining specificity. The optimal working concentration for LS-B1756 was determined to be 5 ug/ml. |
| Uses: | IHC - Paraffin (5 µg/ml), ELISA (1:32000) (Optimal dilution to be determined by the researcher) |
| Size: | 50 µg |
| Concentration: | 0.5 mg/ml |

Immunohistochemistry Image:



Anti-RHPN2 antibody IHC of human kidney. Immunohistochemistry of formalin-fixed, paraffin-embedded tissue after heat-induced antigen retrieval. Antibody LS-B1756 concentration 5 ug/ml.

Requested From:

Japan

Laboratory Reagent For In Vitro Research Use Only

Not for resale without prior written consent from LifeSpan BioSciences, Inc.

Created on 9/23/2014

© 2014 LifeSpan BioSciences